

MONUMENT 367S

CERTIFICATE OF LOCATION OF GOVERNMENT CORNER

South Witness Monument to the Northeast Corner of Section 10, Township 29 North, Range 22 West, County of Ramsey, State of Minnesota.

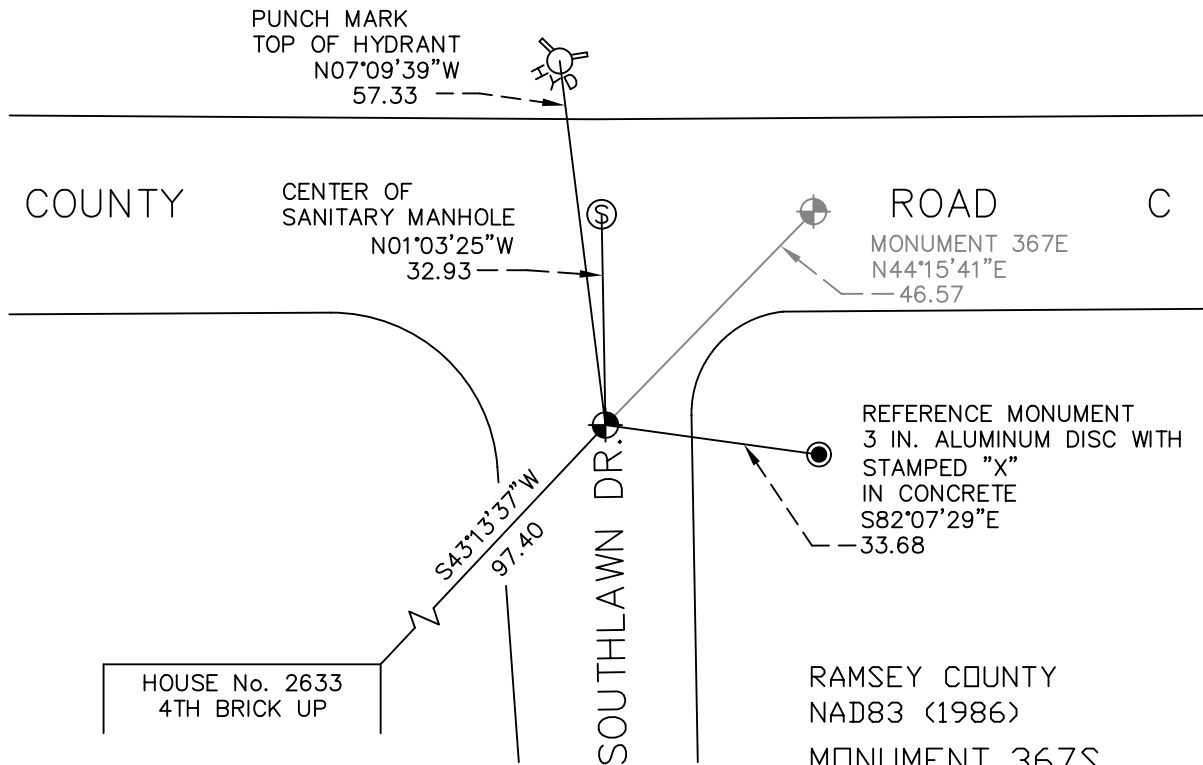
At the corner location shown on the sketch

On October 8, 2009 found a cast iron monument within a cast iron manhole assembly.

left monument as found lowered monument removed monument (explain)

On _____ placed a _____

SKETCH OF REFERENCE TIES



ALL DISTANCES ARE SHOWN IN U.S. SURVEY FEET.
BEARINGS ARE FOR TIE REFERENCE PURPOSES ONLY.

RAMSEY COUNTY
NAD83 (1986)
MONUMENT 367S
X= 592586.988 (Easting)
Y= 183922.288 (Northing)

Statements of evidence relative to this corner are on the following page(s).

I hereby certify that this document and the data contained herein was prepared by me or under my direct supervision this _____ day of _____, 20____.

SIGNATURE

Minnesota License No. _____

- County Surveyor
 Deputy County Surveyor Land Surveyor

OFFICE OF COUNTY SURVEYOR
County of Ramsey

I hereby certify that this document was filed in the County Surveyor's office on the _____ day of _____, 20____.

SIGNATURE

Michael D. Fiebiger, P.L.S.
Ramsey County Surveyor

MONUMENT 367S

Found a manhole at corner. Found a witness corner 33 ft. south; witness corner is a cast iron monument, September 5, 1974.

Tied monument, April 22, 1975.

Monument checked, May 11, 1981.

Ties checked, August 9, 1990.

Set a 20 in. cast iron monument, May 12, 1998.

Retied monument, April 7, 2003.

Retied monument, October 8, 2009.