

# MONUMENT 367E

## CERTIFICATE OF LOCATION OF GOVERNMENT CORNER

East Witness Monument to the Northeast Corner of Section 10, Township 29 North, Range 22 West, County of Ramsey, State of Minnesota.

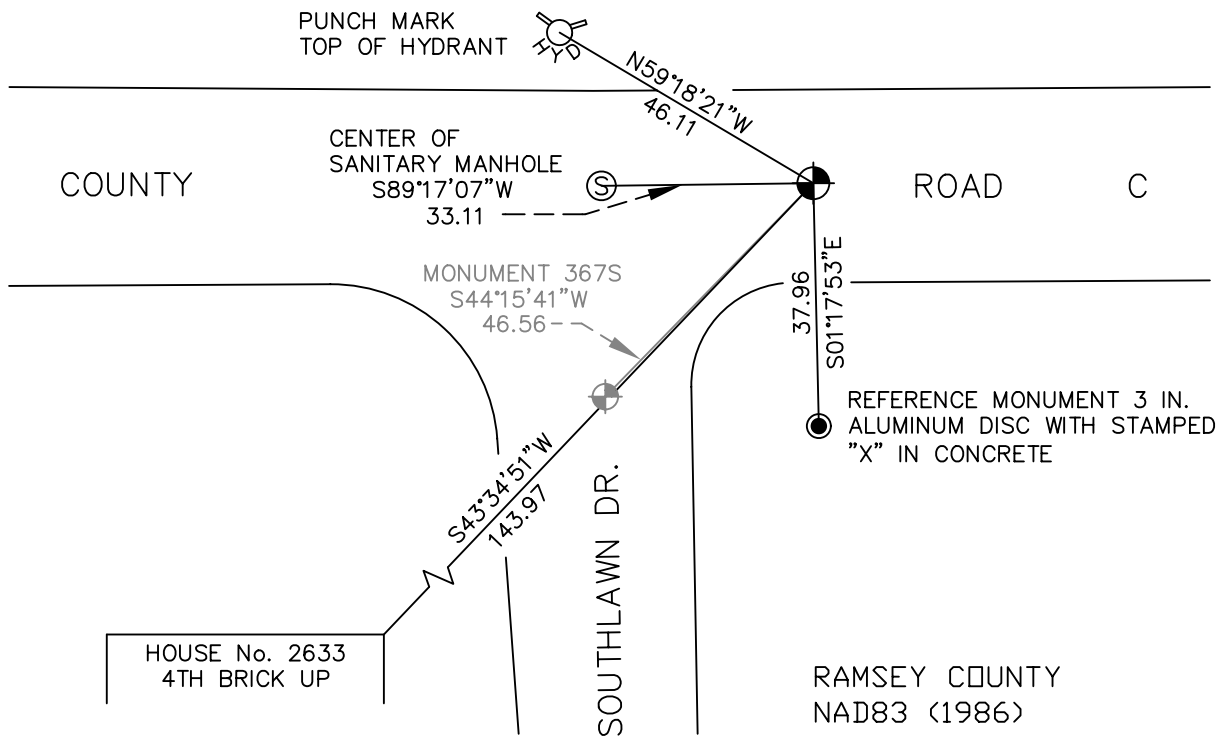
At the corner location shown on the sketch

On October 8, 2009 found a cast iron monument, flush.

left monument as found     lowered monument     removed monument (explain)

On \_\_\_\_\_ placed a \_\_\_\_\_

## SKETCH OF REFERENCE TIES



RAMSEY COUNTY  
NAD83 (1986)

MONUMENT 367E

ALL DISTANCES ARE SHOWN IN U.S. SURVEY FEET.  
BEARINGS ARE FOR TIE REFERENCE PURPOSES ONLY.

X= 592619.492 (Easting)  
Y= 183955.641 (Northing)

Statements of evidence relative to this corner are on the following page(s).

I hereby certify that this document and the data contained herein was prepared by me or under my direct supervision this \_\_\_\_\_ day of \_\_\_\_\_, 20\_\_\_\_.

SIGNATURE

Minnesota License No. \_\_\_\_\_

- County Surveyor  
 Deputy County Surveyor     Land Surveyor

OFFICE OF COUNTY SURVEYOR

County of Ramsey

I hereby certify that this document was filed in the County Surveyor's office on the \_\_\_\_\_ day of \_\_\_\_\_, 20\_\_\_\_.

SIGNATURE

Michael D. Fiebiger, P.L.S.  
Ramsey County Surveyor

# MONUMENT 367E

Found a manhole at corner. Found a witness corner 33 ft. east; witness corner is a cast iron monument, September 5, 1974.

Tied monument, April 22, 1975.

Monument checked, May 11, 1981.

Removed east witness corner, August 29, 1988.

East witness corner replaced, 1989.

Ties checked, August 9, 1990.

Retied monument, April 7, 2003.

Retied monument, October 8, 2009.