

MONUMENT 366S

CERTIFICATE OF LOCATION OF GOVERNMENT CORNER

South Witness Monument to the North Quarter Corner of Section 10, Township 29 North, Range 22 West, County of Ramsey, State of Minnesota.

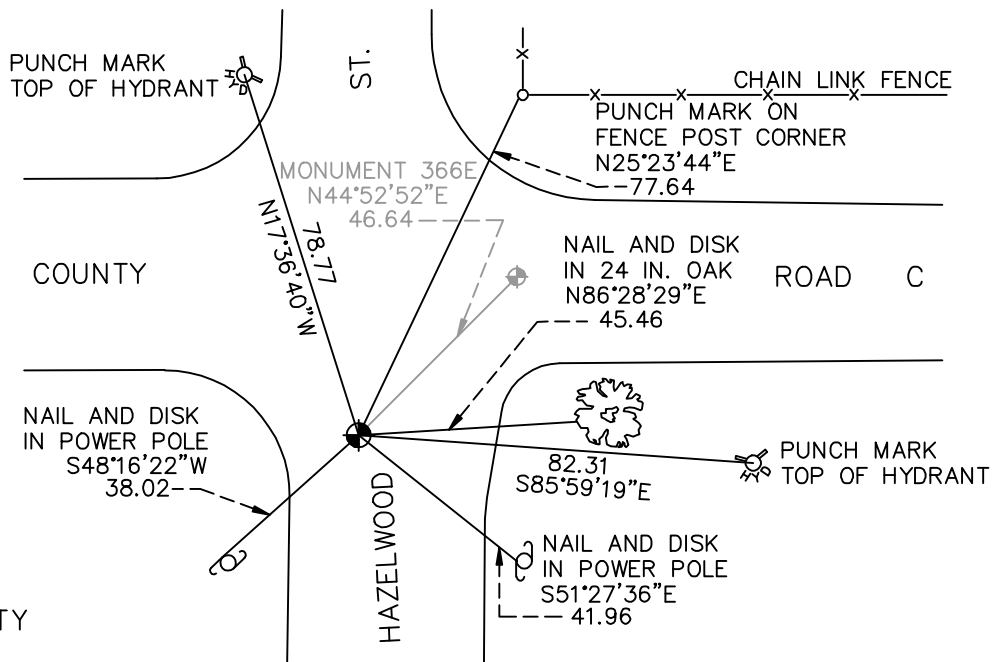
At the corner location shown on the sketch

On October 8, 2009 found a cast iron monument within a cast iron manhole assembly.

left monument as found lowered monument removed monument (explain)

On _____ placed a _____

SKETCH OF REFERENCE TIES



RAMSEY COUNTY
NAD83 (1986)

MONUMENT 366S

X = 589960.671 (Easting)
Y = 183919.041 (Northing)

ALL DISTANCES ARE SHOWN IN U.S. SURVEY FEET.
BEARINGS ARE FOR TIE REFERENCE PURPOSES ONLY.

Statements of evidence relative to this corner are on the following page(s).

I hereby certify that this document and the data contained herein was prepared by me or under my direct supervision this _____ day of _____, 20____.

SIGNATURE

Minnesota License No. _____

- County Surveyor
 Deputy County Surveyor Land Surveyor

OFFICE OF COUNTY SURVEYOR

County of Ramsey

I hereby certify that this document was filed in the County Surveyor's office on the _____ day of _____, 20____.

SIGNATURE

Michael D. Fiebiger, P.L.S.
Ramsey County Surveyor

MONUMENT 366S

Found a manhole at intersection; used P.K. nails placed by Mr. Don Campbell and used by State Highway Department in measuring Sections 1 through 4 for City of Maplewood; placed a cast iron witness corner monument on line 33 ft. south, 1974.

Retied witness corner, April 16, 1975.

Checked monument, May 11, 1981.

Tied monument, August 9, 1990.

Set P.K. nails and retied, July 27, 1994.

Set 20 in. cast iron monument, August, 1994.

Tied out monument and removed for the City of Maplewood, April 25, 2000.

Reset monument within a cast iron manhole assembly, July 11, 2001.

Tied monument, April 7, 2003.

Retied monument, October 8, 2009.