

MONUMENT 365

CERTIFICATE OF LOCATION OF GOVERNMENT CORNER

Northeast Corner of Section 9, Township 29 North, Range 22 West, County of Ramsey, State of Minnesota.

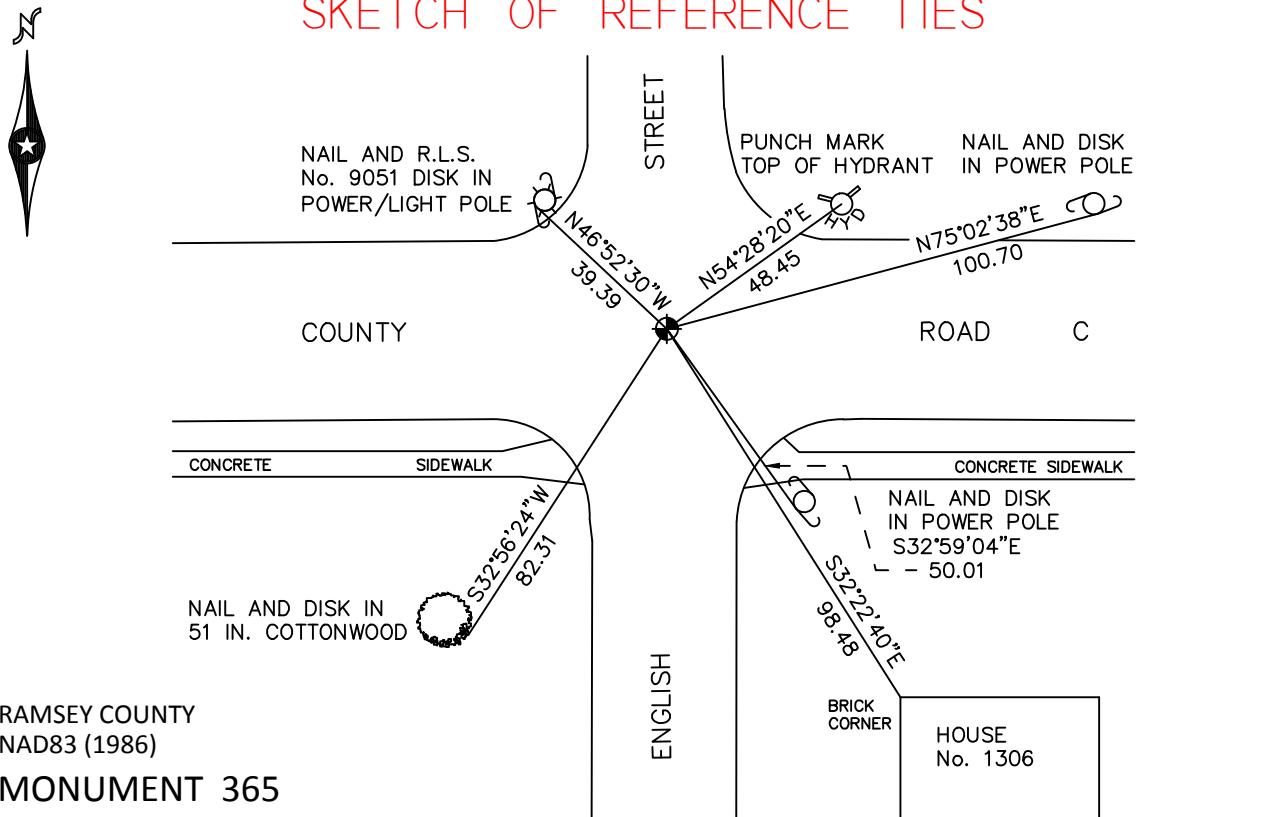
At the corner location shown on the sketch

On October 14, 2010 found a cast iron monument, within a cast iron manhole assembly.

left monument as found raised/lowered monument removed monument (explain)

On _____ placed a _____

SKETCH OF REFERENCE TIES



RAMSEY COUNTY
NAD83 (1986)

MONUMENT 365

X= 587330.013 (Easting)
Y= 183965.439 (Northing)

ALL DISTANCES ARE SHOWN IN U.S. SURVEY FEET.
BEARINGS ARE FOR TIE REFERENCE PURPOSES ONLY.

Statements of evidence relative to this corner are on the following page.

I hereby certify that this document has been prepared by me or under my direct supervision this _____ day of _____, 20____.

MINNESOTA LICENSE NO. _____ SIGNATURE

- County Surveyor Land Surveyor
 Deputy County Surveyor

OFFICE OF COUNTY SURVEYOR
County of Ramsey

I hereby certify that this document was filed in the County Surveyor's office this _____ day of _____, 20____.

SIGNATURE
Craig W. Hinzman, L.S.
Ramsey County Surveyor

MONUMENT 365

Found a cast iron monument, 1974.

Checked monument, September 12, 1977.

Tied monument, May 13, 1981.

Tied and checked monument, August 9, 1990.

Located position from ties before construction, July 19, 1994.

Set a 20 in. cast iron monument, August, 1994.

Tied monument, December 1, 1994.

Retied monument, December 9, 1999.

Retied monument, June 28, 2006.

Tied out monument for removal during road reconstruction, May 25, 2010.

Set a 20 in. cast iron monument, within a cast iron manhole assembly and tied, October 14, 2010.