

MONUMENT 363E

CERTIFICATE OF LOCATION OF GOVERNMENT CORNER

Witness Corner East of the Northwest Corner of Section 9, Township 29 North,
Range 22 West, County of Ramsey, State of Minnesota.

At the corner location shown on the sketch

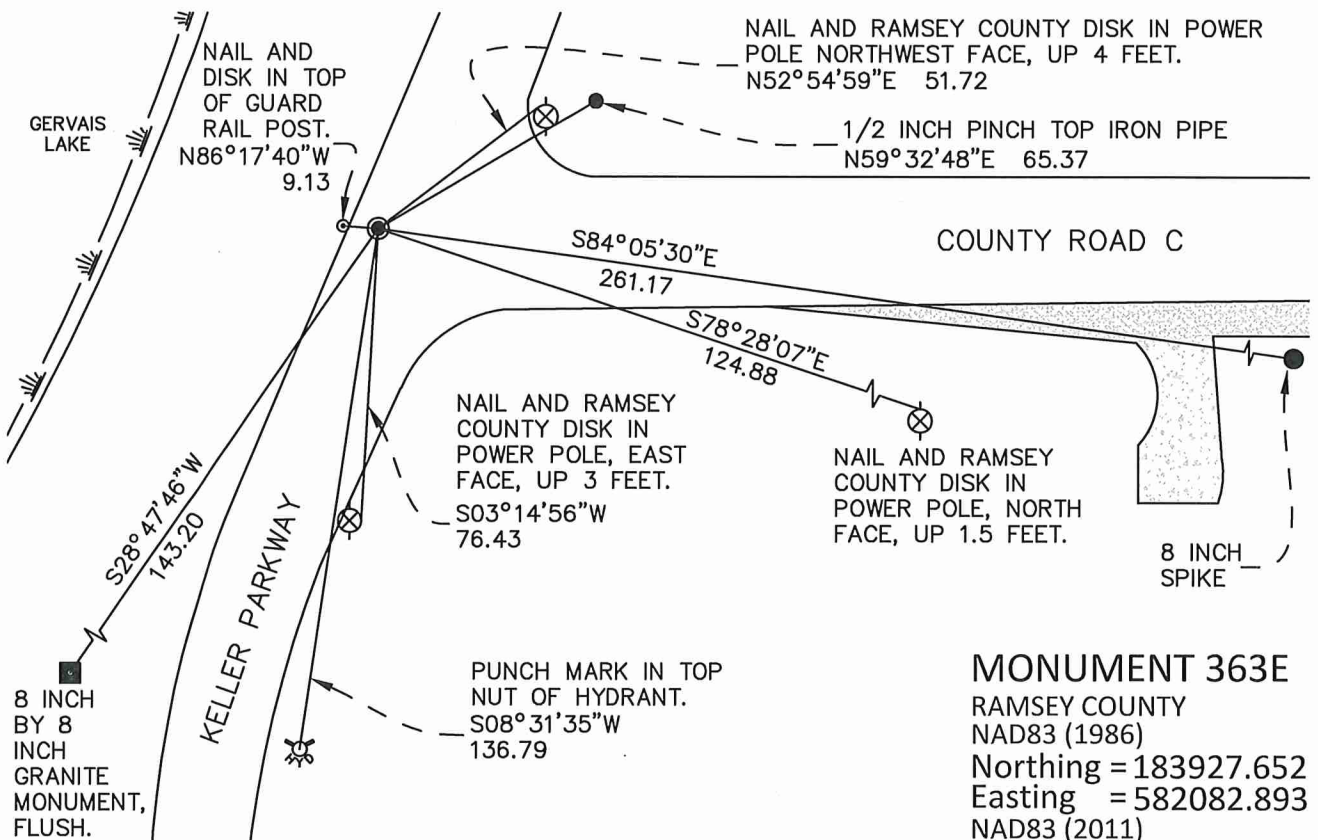
On May 3, 2017 found a "Ramsey County" cast iron monument flush in bituminous roadway.

Offset monument for removal during road reconstruction; monument removed by others.

left monument as found raised/lowered monument removed monument (explain)

On August 15, 2017 placed a 20 inch "Ramsey County" cast iron monument within a manhole assembly. Manhole assembly set by contractor.

SKETCH OF REFERENCE TIES



MONUMENT 363E
 RAMSEY COUNTY
 NAD83 (1986)
 Northing = 183927.652
 Easting = 582082.893
 NAD83 (2011)
 Northing = 183928.450
 Easting = 582082.305

ALL DISTANCES ARE SHOWN IN U.S. SURVEY FEET.
 BEARINGS ARE FOR TIE REFERENCE PURPOSES ONLY.

Statements of evidence relative to this corner are on the following page.

I hereby certify that this survey, plan, or report was prepared by me or under my direct supervision, that I am a duly Licensed Land Surveyor under the laws of the state of Minnesota, and that this certificate is correct and complete to the best of my knowledge and belief.

Daniel D. Baar 11/2/20
 Daniel D. Baar Date
 Ramsey County Surveyor
 Minnesota License No. 45816

OFFICE OF COUNTY SURVEYOR
 County of Ramsey

I hereby certify that this document was filed in the County Surveyor's office this 2nd day of November, 20 20.

Daniel D. Baar
 Daniel D. Baar, L.S.
 Ramsey County Surveyor

MONUMENT 363E

X

Witness corner East of the Northwest Corner Section 9, Township 29 North, Range 22 West

November 24, 1847	Set post corner to Sections 4, 5, 8 and 9. Elm 10 N67°E, 93. Basswood 10 S38°E, 80.
January 13, 1899	In establishing the N.W. Corner of Section 9, found one government stump. Corner in lake. (Map shows a witness monument set 70 feet east of the N.W. Corner) Ramsey County Re-Survey.
June 26, 1974	Found a 1 1/4 inch by 2.6 foot long solid iron. Dug down 4.4 feet in search of more evidence. No luck. Placed cast iron monument with concrete around top and Retied.
August 8, 1990	Retied monument. Ramsey County Surveyor's Office.
July 6, 1995	Removed cast iron monument for maintenance department. Ramsey County Surveyor's Office.
1996	Set a 20 inch cast iron monument. Ramsey County Surveyor's Office.
January 17, 2003	Retied monument. Ramsey County Surveyor's Office.
June 25, 2009	Found a cast iron monument in bit road, flush. Retied. Ramsey County Surveyor's Office.
May 23, 2014	Found a cast iron monument, flush with road. Checked ties using certificate of location dated June 24, 2009. All ties present and in good condition. Ramsey County Surveyor's Office.
June 6, 2016	Set monument offsets for road construction. Ramsey County Surveyor's Office.
May 3, 2017	Found cast iron monument, flush. Performed static GPS observation on monument to obtain NAD 83 (2011) coordinates. Re-set monument offsets for road construction. Unable to locate offsets set on June 6, 2016. Ramsey County Surveyor's Office.
August 15, 2017	Placed a 20 inch "Ramsey County" cast iron monument within a manhole assembly and tied. Manhole assembly set by contractor. Ramsey County Surveyor's Office.