

MONUMENT 361N

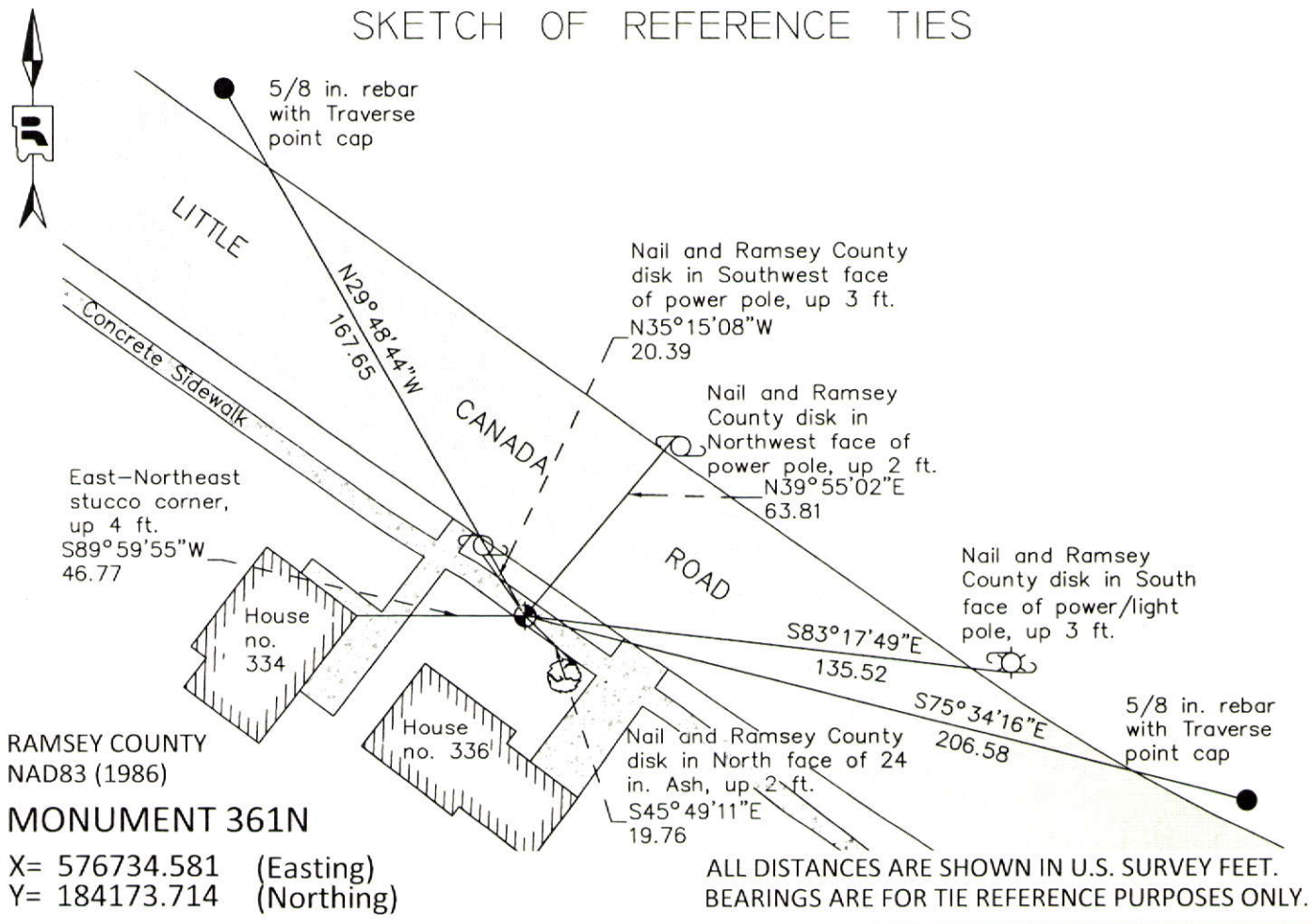
CERTIFICATE OF LOCATION OF GOVERNMENT CORNER

Witness Monument to the Southwest Corner of Section 5, Township 29 North, Range 22 West, County of Ramsey, State of Minnesota.

At the corner location shown on the sketch

- On June 18, 2014 found "Ramsey County" 20 in. cast iron monument flush in grass yard over an 8 in. x 8 in. granite monument with drill hole, down 3.5 ft. Removed cast iron monument for road reconstruction.
- left monument as found
 raised/lowered monument
 removed monument (explain)
- On July 24, 2014 placed a "Ramsey County" 20 in. cast iron monument flush in concrete sidewalk.

SKETCH OF REFERENCE TIES



RAMSEY COUNTY
NAD83 (1986)
MONUMENT 361N
X= 576734.581 (Easting)
Y= 184173.714 (Northing)

Statements of evidence relative to this corner are on the following page.

I hereby certify that this survey, plan, or report was prepared by me or under my direct supervision, that I am a duly Licensed Land Surveyor under the laws of the state of Minnesota and that this certificate is correct and complete to the best of the my knowledge and belief.

Daniel D. Baar 12-16-14
 Daniel D. Baar Date
 Minnesota License No. 45816
 Deputy County Surveyor - Ramsey County

OFFICE OF COUNTY SURVEYOR
County of Ramsey

I hereby certify that this document was filed in the County Surveyor's office this 16th day of December, 20 14.

Craig W. Hinzman
 Craig W. Hinzman, L.S.
 Ramsey County Surveyor

MONUMENT 361N

Witness Monument to the Southwest Corner of Section 5, Township 29 North, Range 22 West

- November 29, 1847 Set post (in pond) Corner to Sections 5, 6, 7 and 8, B. Oak 12 N77°E 240, Burr Oak 12 S76°E 298, Isaac N Higbee, Deputy Surveyor
- December 23, 1896 The Southwest Corner of Section 5 is in Savage Lake (Ramsey County Re-Survey Book map shows a witness monument set in this location).
- May, 1939 Checked monument, Ramsey County Engineer notes.
- May 4, 2012 Computed witness monument location based on map shown in Ramsey County Re-Survey book. Excavated a 10 ft. x 10 ft. area. Found 8 in. x 8 in. granite monument with a drill hole, down 3.5 ft. in front yard of house no. 336. Offset monument. Front yard restored by others. Ramsey County Surveyor's Office.
- July 27, 2012 Set a "Ramsey County" 20 in. cast iron monument using offsets set on May 4, 2012; tied. Monument is flush in grass yard in front of house no. 336, Ramsey County Surveyor's Office.
- June 18, 2014 Cast Iron Monument removed for construction of sidewalk, Ramsey County Surveyor's Office.
- July 24, 2014 Set a new "Ramsey County" 20 inch cast iron monument over granite monument using offsets set on May 4, 2012, tied. Monument is flush with concrete sidewalk in front of house no. 336, Ramsey County Surveyor's Office.