

MONUMENT 361D

CERTIFICATE OF LOCATION OF SECTION SUBDIVISION MONUMENT

West Sixteenth Corner between Sections 5, and 8, Township 29 North, Range 22
West, County of Ramsey, State of Minnesota.

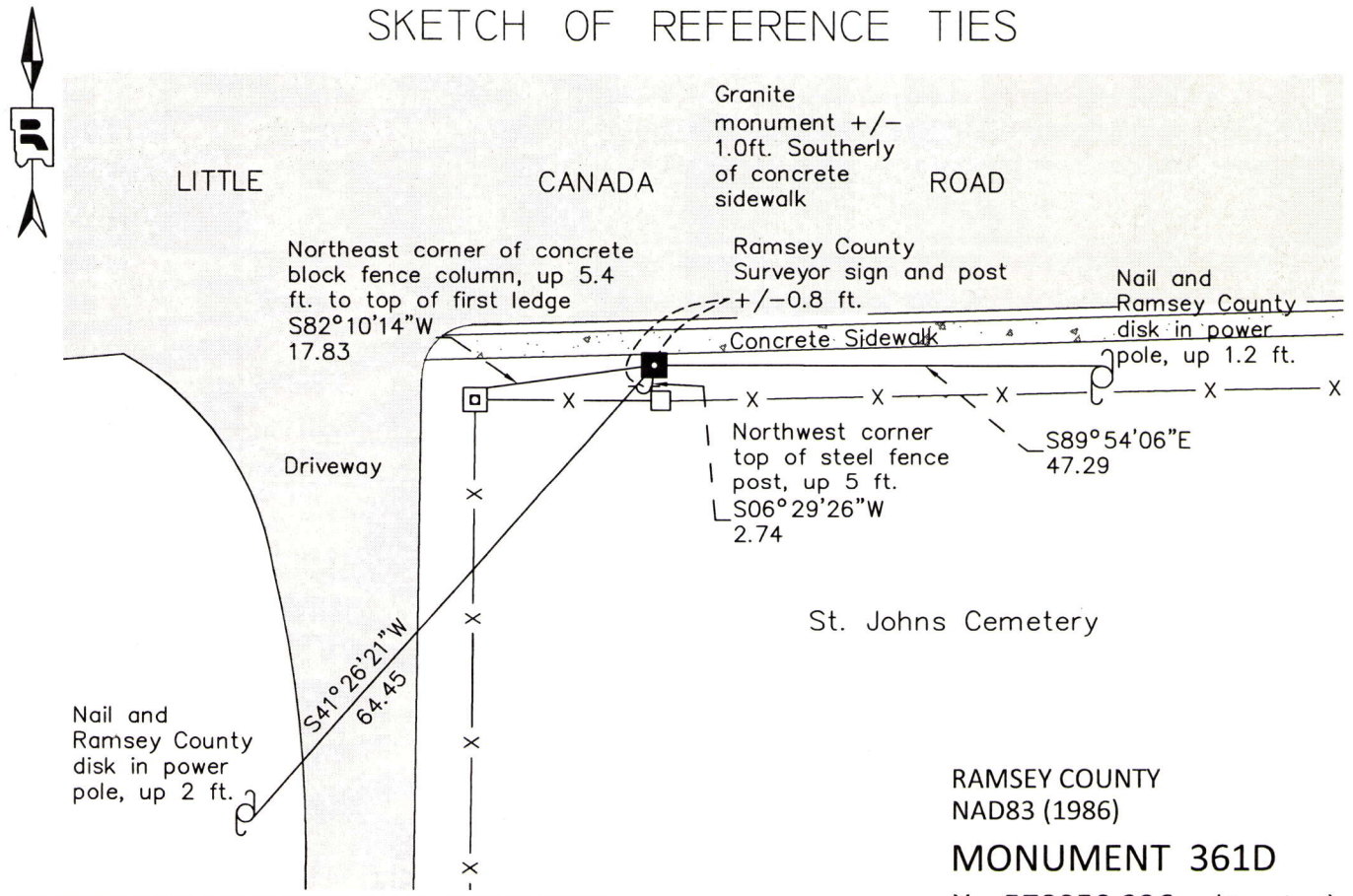
At the corner location shown on the sketch

On November 8, 2013 found a granite monument, down +/-18 in. within a cast iron manhole
assembly.

left monument as found
 raised/lowered monument
 removed monument (explain)

On _____ placed a _____

SKETCH OF REFERENCE TIES



ALL DISTANCES ARE SHOWN IN U.S. SURVEY FEET. BEARINGS ARE FOR TIE REFERENCE PURPOSES ONLY.

RAMSEY COUNTY
 NAD83 (1986)
MONUMENT 361D
 X= 578050.226 (Easting)
 Y= 183869.506 (Northing)

Statements of evidence relative to this corner are on the following page.

I hereby certify that this document was prepared by me or under my direct supervision and that I am a duly Licensed Land Surveyor under the laws of the State of Minnesota.

Daniel D. Baar 12-12-14
 Daniel D. Baar Date
 Minnesota License No. 45816

County Surveyor Land Surveyor
 Deputy County Surveyor

OFFICE OF COUNTY SURVEYOR
 County of Ramsey

I hereby certify that this document was filed in the County Surveyor's office this 12th day of December, 20 14.

Craig W. Hinzman
 Craig W. Hinzman, L.S.
 Ramsey County Surveyor

MONUMENT 361D

West Sixteenth Corner between Section 5, and Section 8, Township 29 North, Range 22 West

Monument shown at this location on Ramsey County Resurvey Map, +/-1895.

Found a granite monument down 8 in., July 11, 1975.

Checked monument, September 11, 1977.

Tied monument, August 16, 1990.

Found a granite down 1.5 ft.; set sign and post +/-0.8 ft. South of monument, September 25, 1996.

Retied monument, June 28, 2006.

Retied a granite monument, down +/-18 in., July 12, 2011.

Placed a cast iron manhole assembly over granite monument, November 8, 2013.