

MONUMENT 360

CERTIFICATE OF LOCATION OF GOVERNMENT CORNER

North Quarter Corner of Section 7, Township 29 North, Range 22 West, County of Ramsey, State of Minnesota.

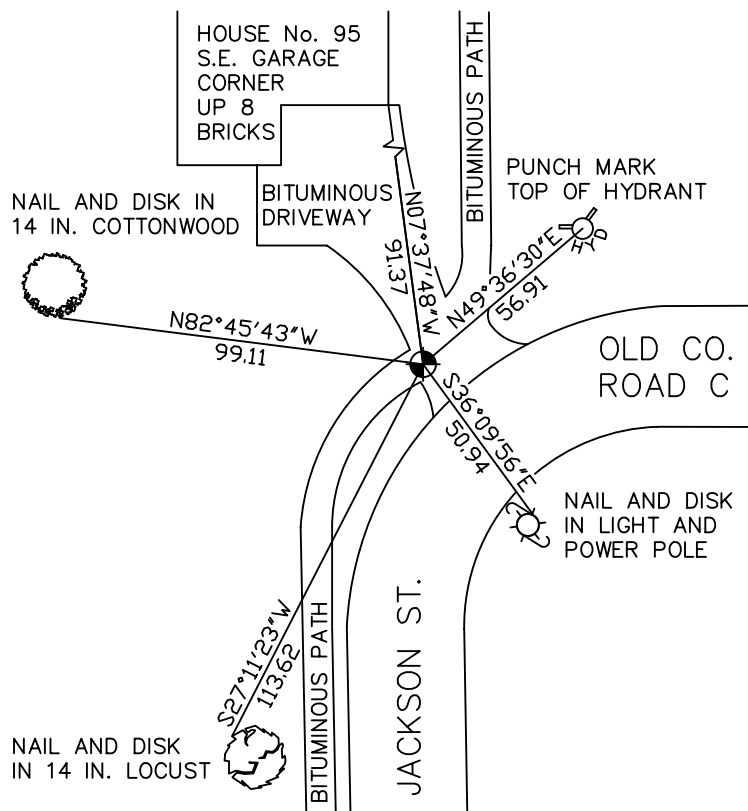
At the corner location shown on the sketch

On July 1, 2009 found a cast iron monument in a bituminous driveway, flush.

left monument as found lowered monument removed monument (explain)

On _____ placed a _____

SKETCH OF REFERENCE TIES



RAMSEY COUNTY
NAD83 (1986)
MONUMENT 360

X= 574115.497 (Easting)
Y= 183840.759 (Northing)

ALL DISTANCES ARE SHOWN IN U.S. SURVEY FEET.
BEARINGS ARE FOR TIE REFERENCE PURPOSES ONLY.

Statements of evidence relative to this corner are on the following page(s).

I hereby certify that this document and the data contained herein was prepared by me or under my direct supervision this _____ day of _____, 20____.

SIGNATURE

Minnesota License No. _____

- County Surveyor
 Deputy County Surveyor Land Surveyor

OFFICE OF COUNTY SURVEYOR
County of Ramsey

I hereby certify that this document was filed in the County Surveyor's office on the _____ day of _____, 20____.

SIGNATURE

Michael D. Fiebiger, P.L.S.
Ramsey County Surveyor

MONUMENT 360

Found a granite monument down 0.4 ft., tied, no date given in field book.

Set a short cast iron monument, July 11, 1975.

Monument checked, September 12, 1977.

Monument destroyed by construction; set a cast iron monument, June, 1980.

Tied monument, May 11, 1981.

Monument found down 0.3 ft. and retied, November 28, 1990.

Monument destroyed by construction, 1995.

Reset location and tied, July 31, 1996.

Retied monument, flush, August 18, 2003.

Retied monument, July 1, 2009.