

# MONUMENT 359

## CERTIFICATE OF LOCATION OF GOVERNMENT CORNER

Northeast Corner of Section 12, Township 29 North, Range 23 West, County of Ramsey, State of Minnesota.

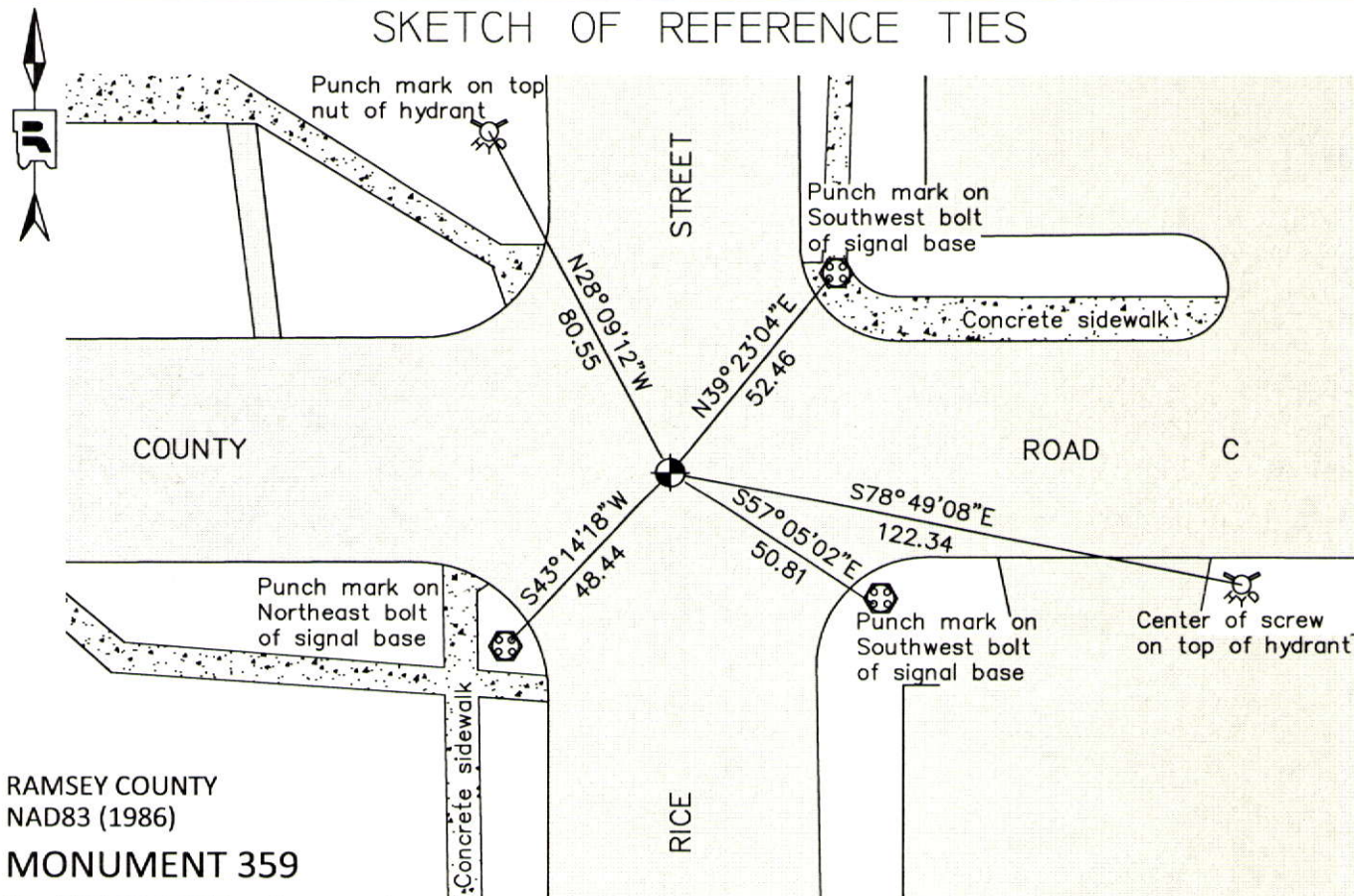
At the corner location shown on the sketch

On August 23, 2012 found a cast iron monument, flush in bituminous road.

left monument as found       raised/lowered monument       removed monument (explain)

On \_\_\_\_\_ placed a \_\_\_\_\_

### SKETCH OF REFERENCE TIES



RAMSEY COUNTY  
NAD83 (1986)  
MONUMENT 359

X= 571694.277 (Easting)  
Y= 183850.833 (Northing)

ALL DISTANCES ARE SHOWN IN U.S. SURVEY FEET.  
BEARINGS ARE FOR TIE REFERENCE PURPOSES ONLY.

Statements of evidence relative to this corner are on the following page.

I hereby certify that this document was prepared by me or under my direct supervision and that I am a duly Licensed Land Surveyor under the laws of the State of Minnesota.

Daniel D. Baar      12-31-14  
Daniel D. Baar      Date

Minnesota License No. 45816

- County Surveyor       Land Surveyor  
 Deputy County Surveyor

OFFICE OF COUNTY SURVEYOR  
County of Ramsey

I hereby certify that this document was filed in the County Surveyor's office this 31st day of December, 20 14.

Craig W. Hinzman  
Craig W. Hinzman, L.S.  
Ramsey County Surveyor

# MONUMENT 359

Northeast Corner of Section 12, Township 29 North, Range 23 West

Set post at Corner to Sections 1, 6, 7, & 12, Br. Oak 9 N55°W 6, Br. Oak 8 N78°E 93, Wht. Oak 7 S20°E 59, B. Oak 10 S40°W 27, October 8, 1847.

In establishing the Northeast Corner of Section 12, I found old lot stakes on Fairchild Avenue, in North Heights Addition and also found old iron stake at Block Corner, from the said stakes I fixed Section Corner and set monument, no witness trees, April, 1895.

Checked monument, May 1939.

Found a railroad spike flush, 1974.

Found a granite monument, down 0.47 ft. and North of railroad spike 0.24 ft.; set a short cast iron monument, July 19, 1976.

Checked monument, July 14, 1977.

Monument down +/-0.1 ft.; tied, June 6, 1990.

Monument tipped; reset in concrete, October 7, 1993.

Tied monument, July 18, 2002.

Retied monument, August 6, 2007.

Found cast iron monument flush in bituminous road; checked condition of ties, August 23, 2012.