

MONUMENT 358

CERTIFICATE OF LOCATION OF FOUND MONUMENT

North Quarter Corner of Section 12, Township 29 North, Range 23 West, County of Ramsey, State of Minnesota.

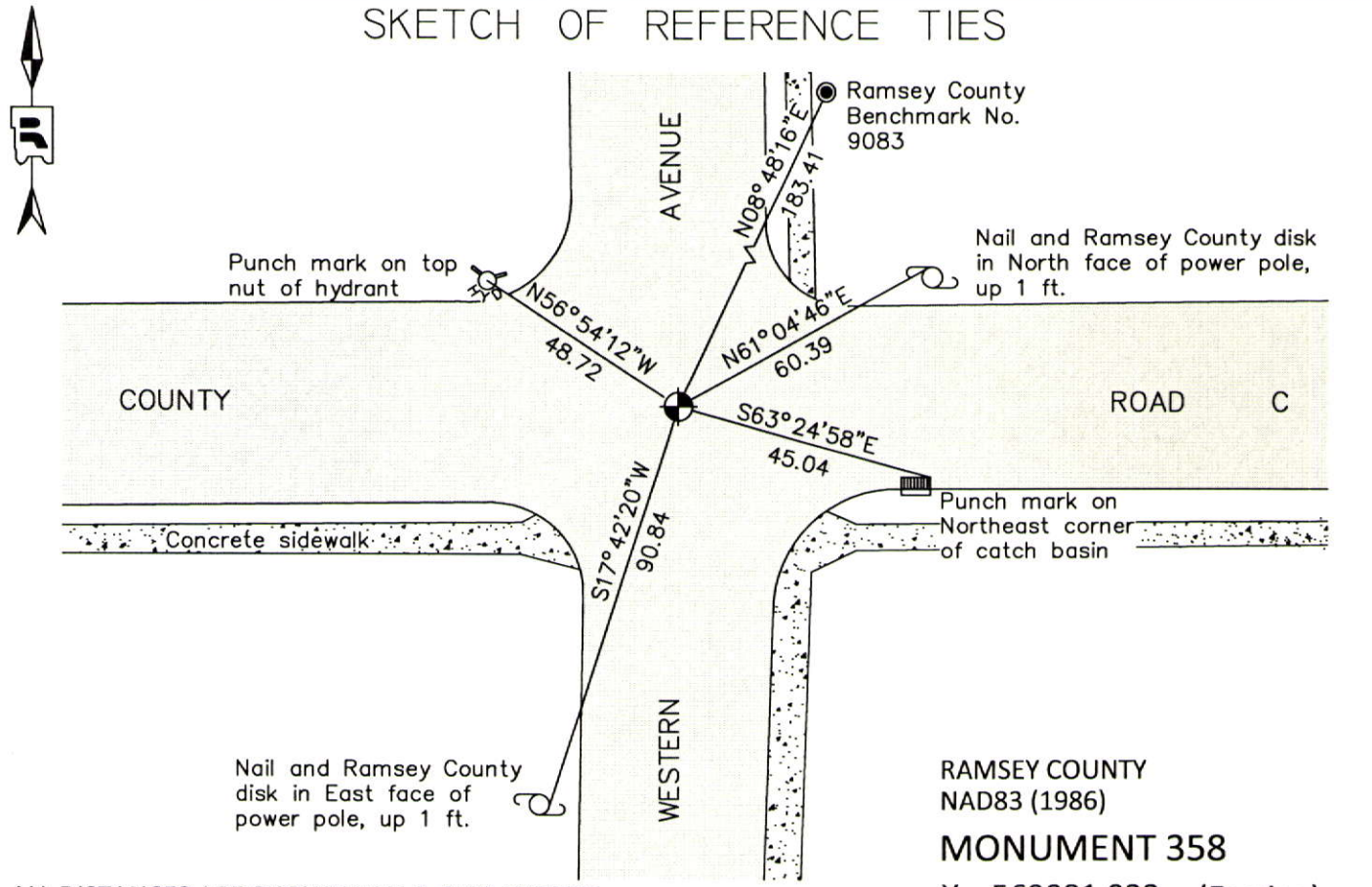
At the corner location shown on the sketch

On June 6, 2012 found a cast iron monument within a cast iron manhole assembly.

left monument as found raised/lowered monument removed monument (explain)

On _____ placed a _____

SKETCH OF REFERENCE TIES



ALL DISTANCES ARE SHOWN IN U.S. SURVEY FEET.
BEARINGS ARE FOR TIE REFERENCE PURPOSES ONLY.

RAMSEY COUNTY
NAD83 (1986)
MONUMENT 358
X= 569081.932 (Easting)
Y= 183828.384 (Northing)

Statements of evidence relative to this corner are on the following page.

I hereby certify that this document was prepared by me or under my direct supervision and that I am a duly Licensed Land Surveyor under the laws of the State of Minnesota.

Daniel D. Baar 12-31-14
Daniel D. Baar Date
Minnesota License No. 45816

County Surveyor Land Surveyor
 Deputy County Surveyor

OFFICE OF COUNTY SURVEYOR
County of Ramsey

I hereby certify that this document was filed in the County Surveyor's office this 31st day of December, 20 14.

Craig W. Hinzman
Craig W. Hinzman, L.S.
Ramsey County Surveyor

MONUMENT 358

North Quarter Corner of Section 12, Township 29 North, Range 23 West

Set 1/4 Section post, W. Oak 12 N4°W 55, October 31, 1847.

The 1/4 Corner between Section 1 and 12 was fixed half way between Rice and Dale Street, no Government witness trees, monument set, May, 1895.

Checked monument, November, 1954.

WILLMUS ESTATES PLAT NO. 1 shows an iron monument at this location, September 29, 1964.

Found a cast iron monument flush and tied, July 31, 1974.

Checked monument, July 14, 1977.

Retied monument, July 18, 2002.

Found a cast iron monument within a cast iron manhole assembly and retied, August 6, 2007.

Checked condition of cast iron monument within a cast iron manhole assembly and ties, June 6, 2012.