

MONUMENT 357

CERTIFICATE OF LOCATION OF FOUND MONUMENT

Northeast Corner of Section 11, Township 29 North, Range 23 West, County of Ramsey, State of Minnesota.

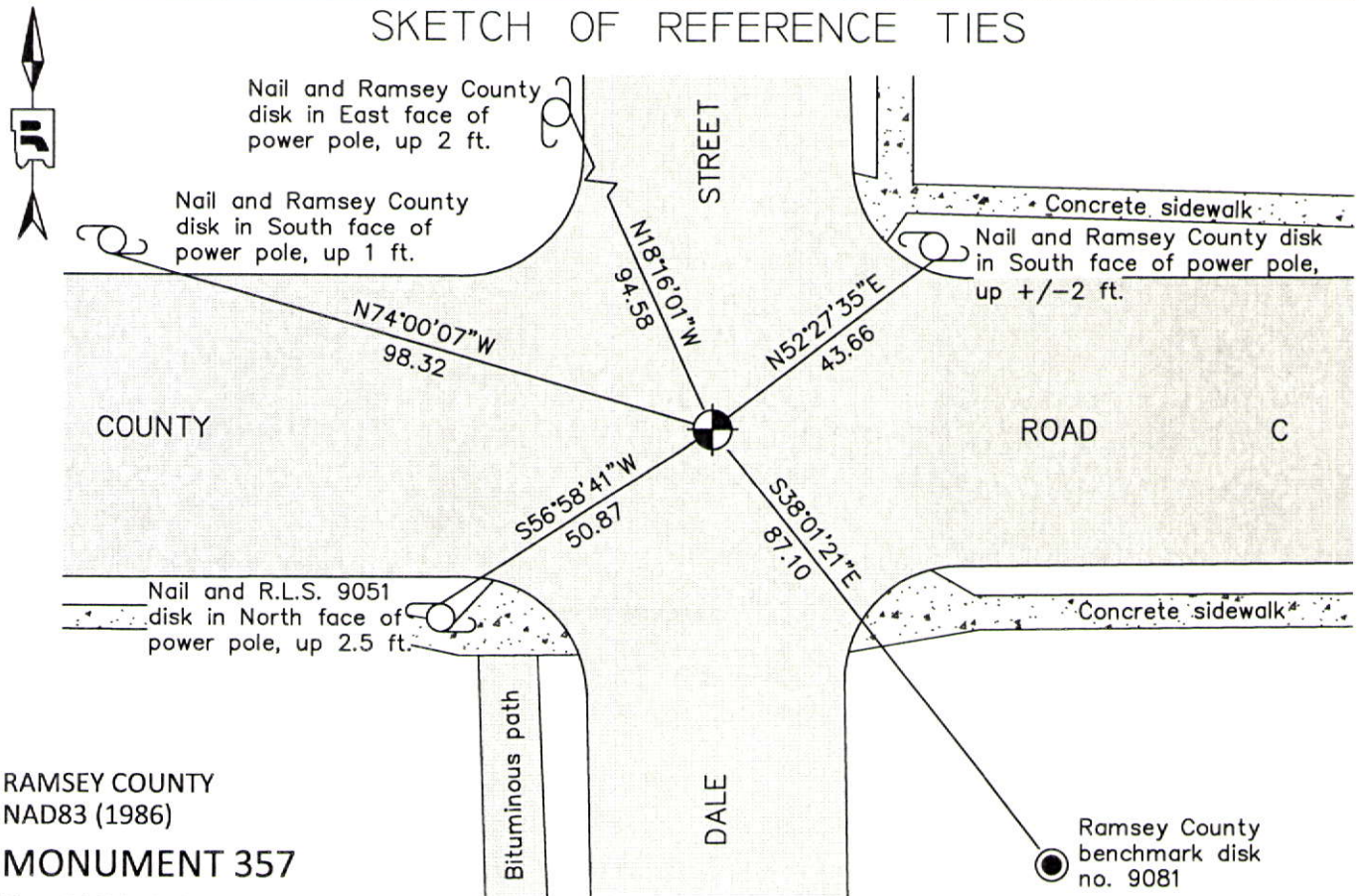
At the corner location shown on the sketch

On June 12, 2012 found a cast iron monument within a cast iron manhole assembly.

left monument as found raised/lowered monument removed monument (explain)

On _____ placed a _____

SKETCH OF REFERENCE TIES



RAMSEY COUNTY
NAD83 (1986)
MONUMENT 357

X= 566470.262 (Easting)
Y= 183805.998 (Northing)

ALL DISTANCES ARE SHOWN IN U.S. SURVEY FEET.
BEARINGS ARE FOR TIE REFERENCE PURPOSES ONLY.

Statements of evidence relative to this corner are on the following page.

I hereby certify that this document was prepared by me or under my direct supervision and that I am a duly Licensed Land Surveyor under the laws of the State of Minnesota.

Daniel D. Baar 12-30-14
Daniel D. Baar Date
Minnesota License No. 45816

County Surveyor
 Deputy County Surveyor Land Surveyor

OFFICE OF COUNTY SURVEYOR
County of Ramsey

I hereby certify that this document was filed in the County Surveyor's office this 30th day of December, 20 14.

Craig W. Hinzman
Craig W. Hinzman, L.S.
Ramsey County Surveyor

MONUMENT 357

Northeast Quarter of Section 11, Township 29 North, Range 23 West

Set post Corner to Sections 1, 2, 11, & 12, W. Oak 16 N5°E 40, "Do" (W. Oak) 17 N84°W 31, November 3, 1847.

The Southeast Corner of Section 2 (Northeast Corner of Section 11) was established by local evidence. These men who were familiar with the location of the original stake verified the present monument. They were John McCarron, Thomas Brennon, and William Gould Sr. Each one said that the monument was placed where the original stake stood and further Mr. Gould said that the present traveled road was placed on the Section line for about 1300 feet going West. They were present when the Corner was fixed, Gates A. Johnson Jr., County Surveyor, Gates A. Johnson, Deputy Surveyor, Edward A. Schafer, Thomas Gould, Chairmen, May 21, 1895.

Placed punch mark ties at the end of culverts, July, 1945.

Checked monument, November, 1954.

Found cast iron monument broken off and tied, July 31, 1974.

Replaced with a full cast iron monument, December 2, 1974.

Checked monument, July 14, 1977.

Tied monument, down +/-0.1 ft., January 10, 1991.

Removed monument for road maintenance, June, 2000.

Reset cast iron monument, down 18 in., within a cast iron manhole assembly, September, 2000.

Tied monument, July 17, 2002.

Retied monument, August 3, 2007.

Retied cast iron monument within a cast iron manhole assembly, June 12, 2012.