

MONUMENT 353

CERTIFICATE OF LOCATION OF FOUND MONUMENT

Northeast Corner of Section 9, Township 29 North, Range 23 West, County of Ramsey, State of Minnesota.

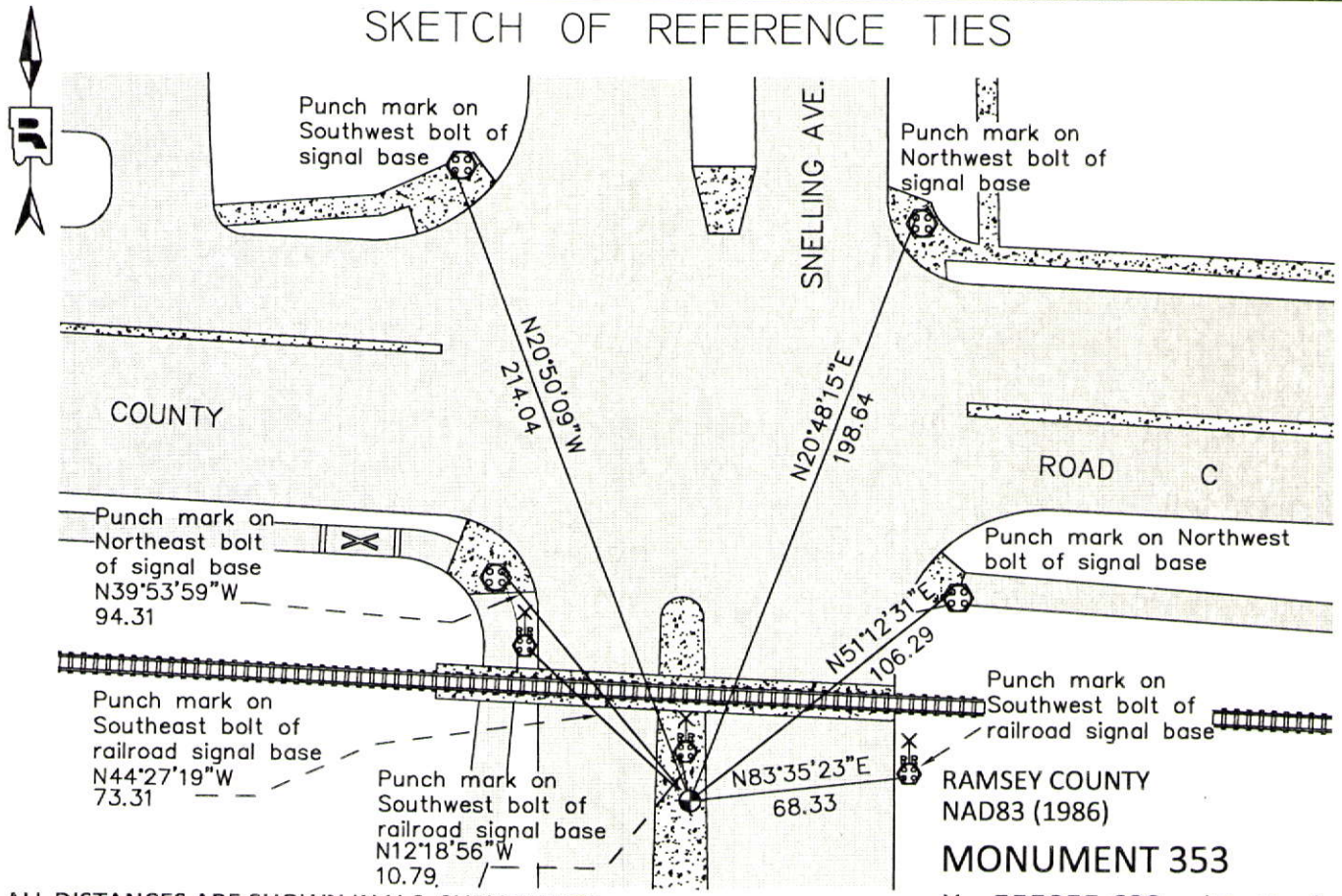
At the corner location shown on the sketch

On June 20, 2012 found a "Ramsey County" cast iron monument within a cast iron manhole assembly.

left monument as found raised/lowered monument removed monument (explain)

On _____ placed a _____

SKETCH OF REFERENCE TIES



ALL DISTANCES ARE SHOWN IN U.S. SURVEY FEET.
BEARINGS ARE FOR TIE REFERENCE PURPOSES ONLY.

RAMSEY COUNTY
NAD83 (1986)
MONUMENT 353
X= 555955.632 (Easting)
Y= 183768.213 (Northing)

Statements of evidence relative to this corner are on the following page.

I hereby certify that this document was prepared by me or under my direct supervision and that I am a duly Licensed Land Surveyor under the laws of the State of Minnesota.

Daniel D. Baar 12-31-14
Daniel D. Baar Date
Minnesota License No. 45816

County Surveyor Land Surveyor
 Deputy County Surveyor

OFFICE OF COUNTY SURVEYOR
County of Ramsey

I hereby certify that this document was filed in the County Surveyor's office this 31st day of December, 20 14.

Craig W. Hinzman
Craig W. Hinzman, L.S.
Ramsey County Surveyor

MONUMENT 353

Northeast Corner of Section 9, Township 29 North, Range 23 West

Set post Corner to Sections 3, 4, 9, & 10, W. Oak 10 N51°E 2.52, November 3, 1847.

The Northeast Corner of Section 9 was prorated and fixed; Government witness trees gone, January 7, 1897.

Found a cast iron monument, 1975.

Checked monument, July 15, 1977.

Cast iron monument down +/-0.4 ft., January 10, 1991.

Retied monument, August 7, 2002.

Monument tied out prior to removal by construction activity, no date given in field book.

Set a cast iron monument, October, 2004.

Cast iron manhole assembly placed around monument, September 25, 2005.

Tied monument, August 6, 2007.

Checked cast iron monument within a cast iron manhole assembly and ties, June 20, 2012.