

MONUMENT 350

CERTIFICATE OF LOCATION OF GOVERNMENT CORNER

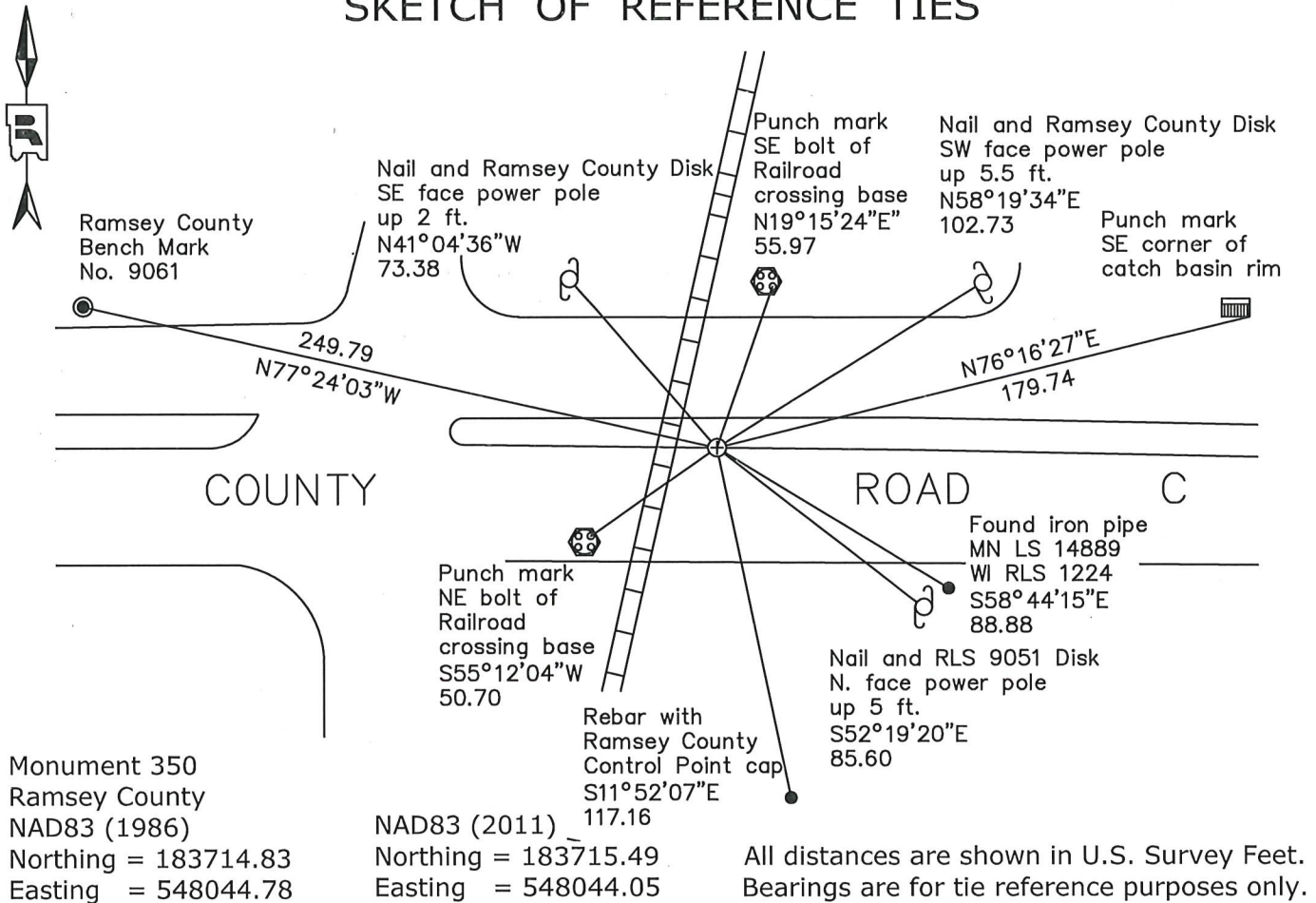
North ¼ Corner of Section 8, Township 29 North, Range 23 West, County of Ramsey, State of Minnesota.

At the corner location shown on the sketch

On June 24, 2019 found a cast iron monument within a cast iron manhole assembly.

On May 14, 2020 placed a "Ramsey County" copper marker in concrete road.

SKETCH OF REFERENCE TIES



Statements of evidence relative to this corner are on the following page.

I hereby certify that this survey, plan, or report was prepared by me or under my direct supervision, that I am a duly Licensed Land Surveyor under the laws of the state of Minnesota, and that this certificate is correct and complete to the best of my knowledge and belief.

Devin R. Ball 4/6/22
 Devin R. Ball Date
 Land Surveyor
 Minnesota License No. 56023

OFFICE OF COUNTY SURVEYOR
 County of Ramsey

I hereby certify that this document was filed in the County Surveyor's office this 7th day of April, 2022.

Daniel D. Baar
 Daniel D. Baar
 Ramsey County Surveyor
 Minnesota License No. 45816

MONUMENT 350

North $\frac{1}{4}$ Corner of Section 8, Township 29, Range 23

November 1847	Set Quarter Section Post; Bur Oak 10 N51°E 91, Bur Oak 9 S35°E 105. Isaac N. Higbee, Deputy Surveyor
December 20, 1899	Found one Government tree; fixed corner and tied out. Ramsey County Resurvey
April 1900	Set Monument. Ramsey County Resurvey
August 15, 1975	Found nothing; re-established position from survey by Ray Wolfgram. Set cast iron monument. Ramsey County Surveyor's Office
Unknown date, 1979	Destroyed by construction. Ramsey County Surveyor's Office
Unknown date, 1981	Replaced cast iron monument and tied. Ramsey County Surveyor's Office
August 6, 2002	Retied monument. Ramsey County Surveyor's Office
July 1, 2009	Retied monument. Ramsey County Surveyor's Office
May 9, 2014	Tied monument for removal during road construction. Ramsey County Surveyor's Office
October 6, 2014	Found a "Ramsey County" cast iron monument, flush in curb. Removed existing 4 3/8 inch cast iron monument and replaced it with a 20 inch "Ramsey County" cast iron monument within a cast iron manhole. Ramsey County Surveyor's Office
October 15, 2014	Tied "Ramsey County" cast iron monument within a cast iron manhole assembly. Ramsey County Surveyor's Office
September 6, 2018	Found a cast iron monument within a cast iron manhole assembly and inspected local ties. Ramsey County Surveyor's Office
June 24, 2019	Found a cast iron monument within a cast iron manhole assembly. Checked local ties and established offsets prior to removal during road construction. Ramsey County Surveyor's Office
May 14, 2020	Placed a "Ramsey County" copper marker in concrete road following road construction using offsets. Recorded local ties. Ramsey County Surveyor's Office