

# MONUMENT 35

## CERTIFICATE OF LOCATION OF GOVERNMENT CORNER

Center of Section 2, Township 30 North, Range 23 West, County of Ramsey,  
State of Minnesota.

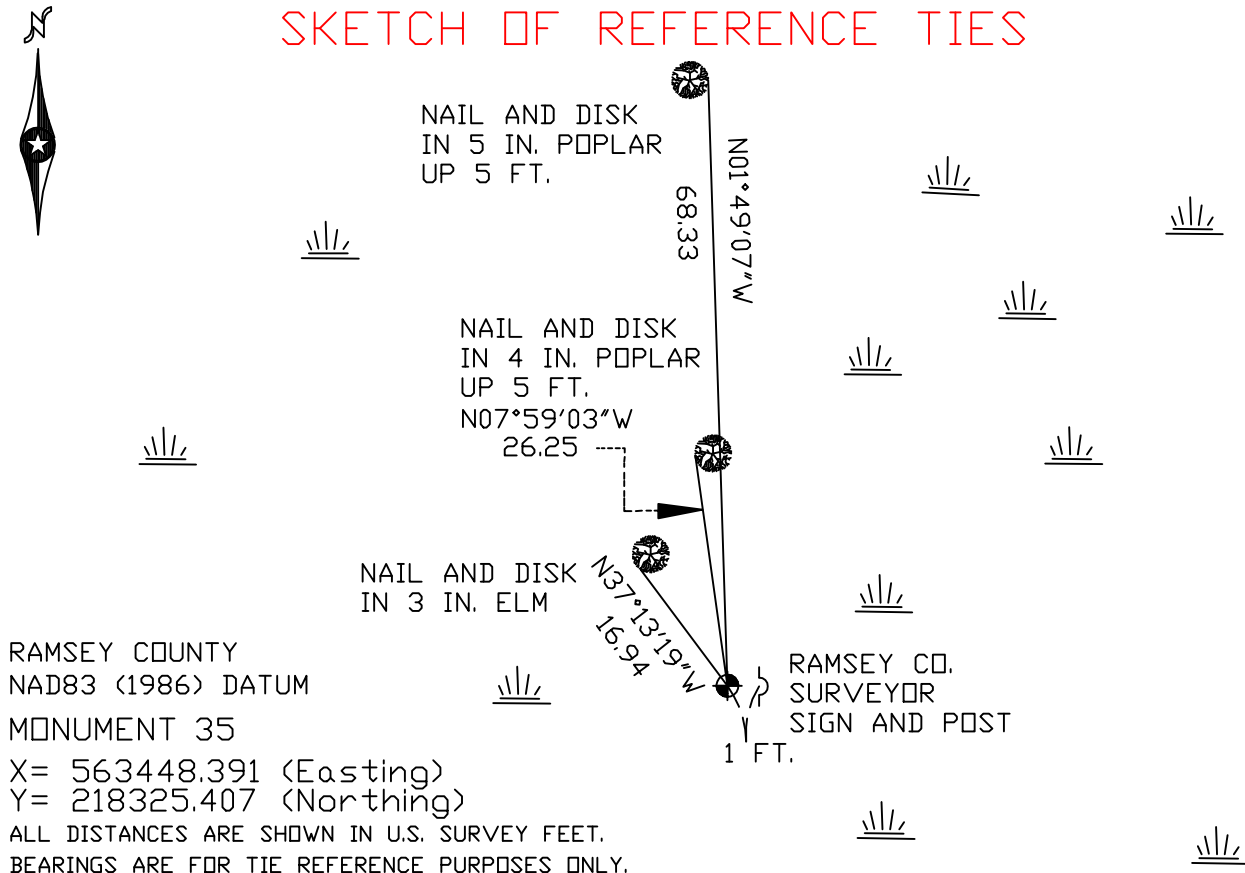
At the corner location shown on the sketch

On February 2, 2005 found 2 1/2 inch iron pipe down 24 inches.

left monument as found     lowered monument     removed monument (explain)

On February 4, 2005 placed a cast iron cap monument flush in concrete over  
2 1/2 inch iron pipe.

### SKETCH OF REFERENCE TIES



Statements of evidence relative to this corner are on the following page(s).

I hereby certify that this document and the data contained herein was prepared by me or under my direct supervision this \_\_\_\_\_ day of \_\_\_\_\_, 20\_\_\_\_.

SIGNATURE

Minnesota License No. \_\_\_\_\_

County Surveyor       Land Surveyor

OFFICE OF COUNTY SURVEYOR

County of Ramsey

I hereby certify that this document was filed in the County Surveyor's office on the \_\_\_\_ day of \_\_\_\_\_, 20\_\_\_\_.

David D. Claypool, P.L.S., County Surveyor

By \_\_\_\_\_, Deputy

## MONUMENT 35

**Found 2.5 in. iron pipe, above water +/- 0.8 ft., retied monument, December 23, 1975.**

**Found 2.5 in. iron pipe under 2 ft. of ice; pounded 20 ft. of 3/4 in. aluminum rod down through center of iron pipe. Placed 5 ft. of 6 in. PVC pipe for a protective collar around iron pipe and rod and then filled PVC pipe with concrete. Threaded onto the top of the aluminum rod, a cast iron cap monument marked "Center of Section", February 2, 2005.**

**Retied monument, February 4, 2005.**