

MONUMENT 348N

CERTIFICATE OF LOCATION OF GOVERNMENT CORNER

Meander Corner No. 5, Section 1, Township 29 North, Range 22 West, County of Ramsey, State of Minnesota.

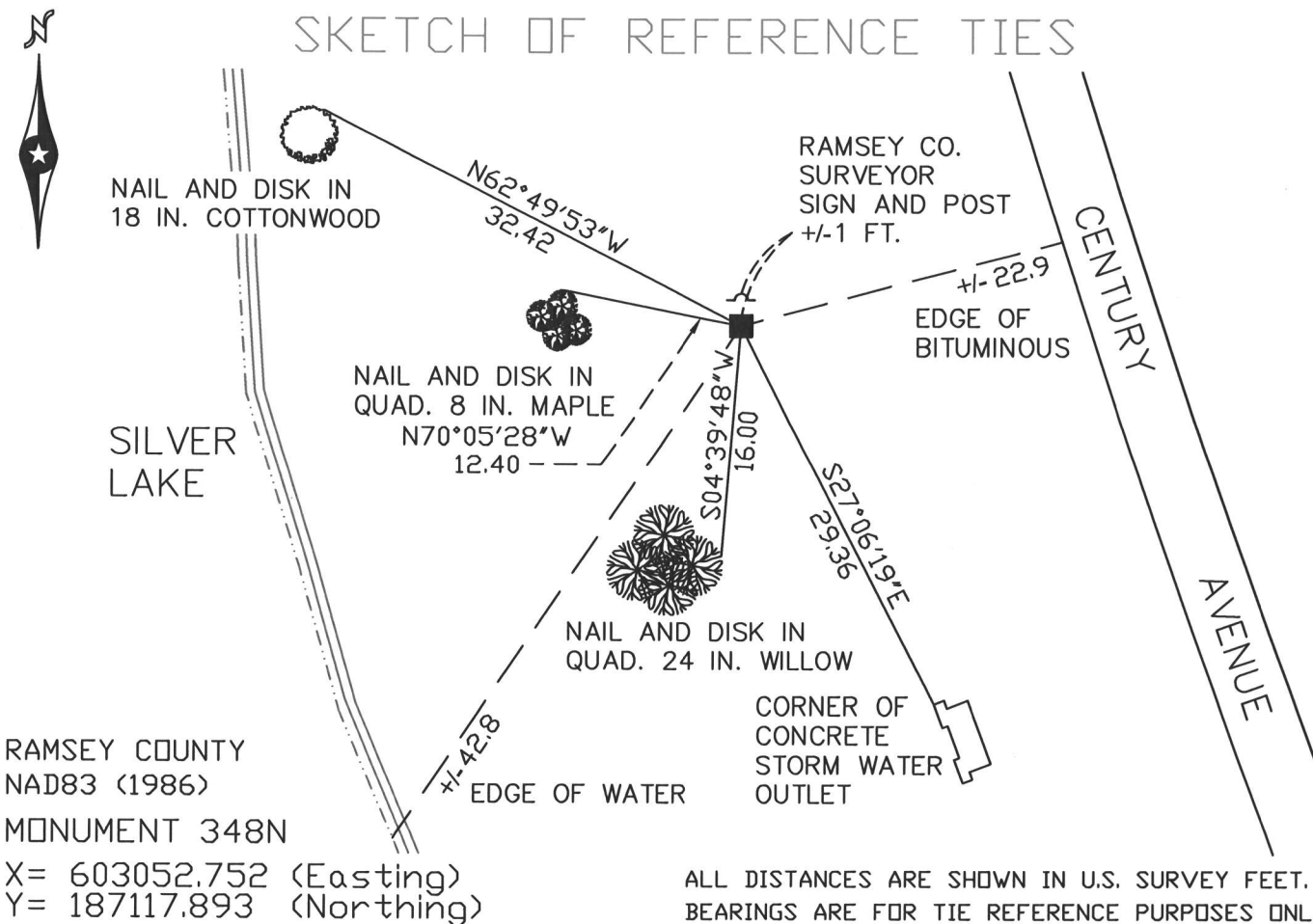
At the corner location shown on the sketch

On July 6, 2009 found a granite monument, down 0.5 feet.

left monument as found lowered monument removed monument (explain)

On _____ placed a _____

SKETCH OF REFERENCE TIES



Statements of evidence relative to this corner are on the following page(s).

I hereby certify that this document and the data contained herein was prepared by me or under my direct supervision this 23 day of September, 2010.

Michael D. Fiebiger
SIGNATURE

Minnesota License No. 25717

- County Surveyor
 Deputy County Surveyor Land Surveyor

OFFICE OF COUNTY SURVEYOR
County of Ramsey

I hereby certify that this document was filed in the County Surveyor's office on the 23 day of September, 2010.

Michael D. Fiebiger
SIGNATURE

Michael D. Fiebiger, P.L.S.
Ramsey County Surveyor

MONUMENT 348N

Found a granite monument flush, 1975.

Checked monument, September 12, 1977.

Tied monument, August 15, 1990.

Found sign and bent post. Set a new post +/- 1 ft. north, September 25, 1996.

Retied monument, April 10, 2003.

Retied monument, July 6, 2009.

