

MONUMENT 347

CERTIFICATE OF LOCATION OF GOVERNMENT CORNER

Center of Section 1, Township 29 North, Range 22 West, County of Ramsey, State of Minnesota.

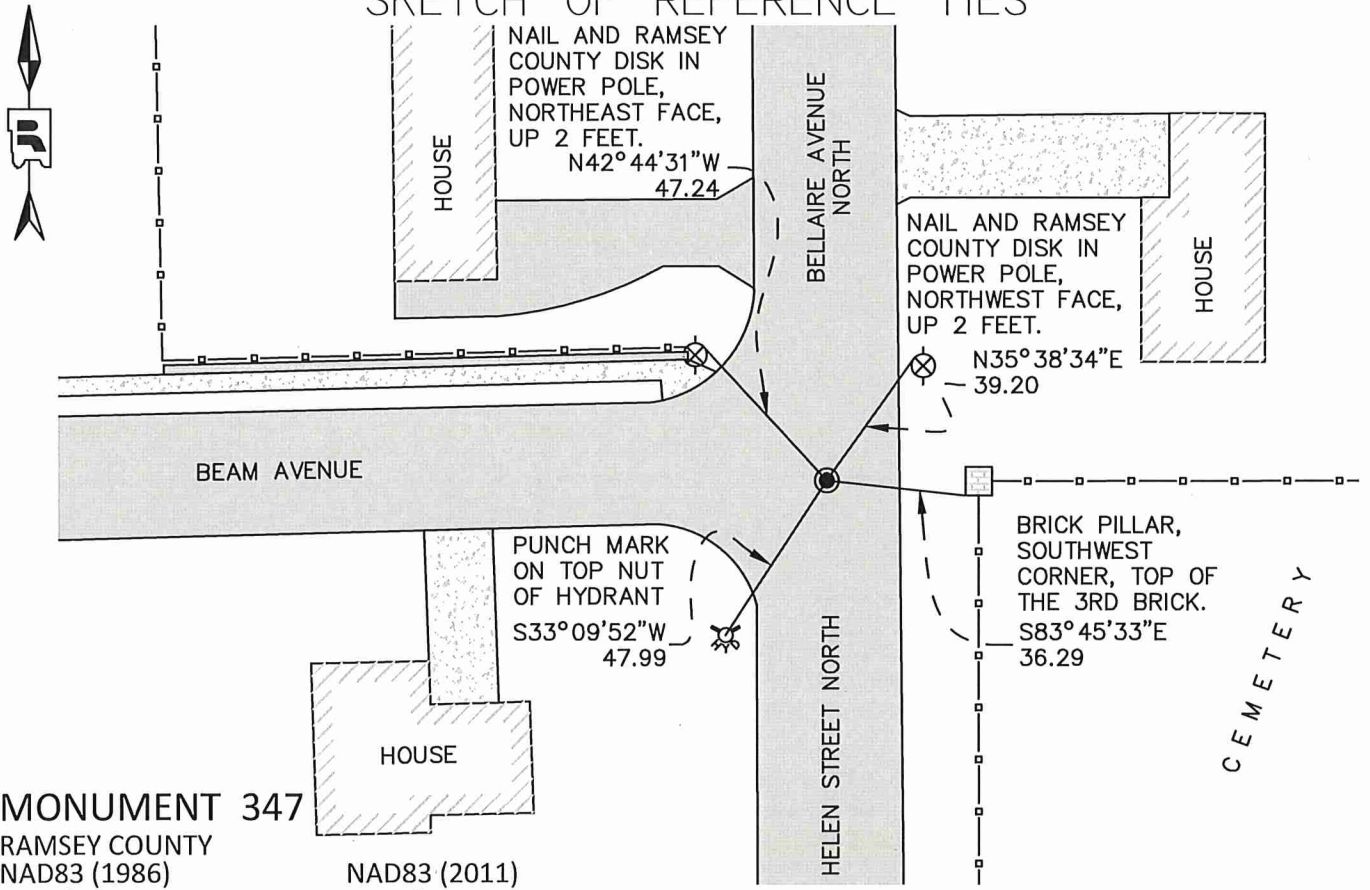
At the corner location shown on the sketch

On May 18, 2016 found a cast iron monument flush. Tied monument for removal during road reconstruction.

left monument as found raised/lowered monument removed monument (explain)

On August 30, 2017 placed a 20 inch "Ramsey County" cast iron monument encased in concrete,
flush in bituminous roadway.

SKETCH OF REFERENCE TIES



MONUMENT 347
 RAMSEY COUNTY
 NAD83 (1986) NAD83 (2011)
 Northing = 186708.878 Northing = 186709.643
 Easting = 600429.960 Easting = 600429.566

ALL DISTANCES ARE SHOWN IN U.S. SURVEY FEET.
 BEARINGS ARE FOR TIE REFERENCE PURPOSES ONLY.

Statements of evidence relative to this corner are on the following page.

I hereby certify that this survey, plan, or report was prepared by me or under my direct supervision, that I am a duly Licensed Land Surveyor under the laws of the state of Minnesota, and that this certificate is correct and complete to the best of my knowledge and belief.

Daniel D. Baar 7/6/21
 Daniel D. Baar Date
 Ramsey County Surveyor
 Minnesota License No. 45816

OFFICE OF COUNTY SURVEYOR
 County of Ramsey

I hereby certify that this document was filed in the County Surveyor's office this 6th day of July, 2021.

Daniel D. Baar
 Daniel D. Baar, L.S.
 Ramsey County Surveyor

MONUMENT 347

Center of Section 1, Township 29 North, Range 22 West

October 18, 1900	Fixed the center of section by intersection and set monument. Ramsey County Re-monumentation Survey.
June, 1965	Checked monument. Found a spike over granite monument. Ramsey County Engineer's Office.
July 17, 1975	Found a granite monument down 0.87 feet. Ramsey County Surveyor's Office.
May 25, 1976	Set cast iron monument over granite monument. Ramsey County Surveyor's Office.
August 15, 1990	Retied monument. Ramsey County Surveyor's Office.
May 9, 1996	Tied monument for City. Ramsey County Surveyor's Office.
August 27, 1997	Set a 20 inch cast iron monument. Ramsey County Surveyor's Office.
April 10, 2003	Retied monument. Ramsey County Surveyor's Office.
July 15, 2008	Tied out monument for possible removal during road construction. Ramsey County Surveyor's Office.
July 6, 2009	Found cast iron monument, down 0.2 feet. Retied monument. Ramsey County Surveyor's Office.
June 6, 2014	Found a cast iron monument, down 0.2 feet. Checked local ties using certificate of location dated July 9, 2009. All ties present and in good condition. Ramsey County Surveyor's Office.
May 18, 2016	Set monument offsets for upcoming road construction. Also performed a Static GPS observation on monument to obtain NAD 83 (2011) coordinates. Ramsey County Surveyor's Office.
Summer, 2017	Cast iron monument removed by contractor during road construction. Exact date unknown. Ramsey County Surveyor's Office.
August 30, 2017	Set a 20 inch "Ramsey County" cast iron monument encased in concrete flush in bituminous roadway using construction offsets and tied it out. Ramsey County Surveyor's Office.
July 25, 2018	Found cast iron monument, flush. All ties accounted for. Ramsey County Surveyor's Office