

MONUMENT 346

CERTIFICATE OF LOCATION OF GOVERNMENT CORNER

East Quarter Corner of Section 2, Township 29 North, Range 22 West, County of Ramsey, State of Minnesota.

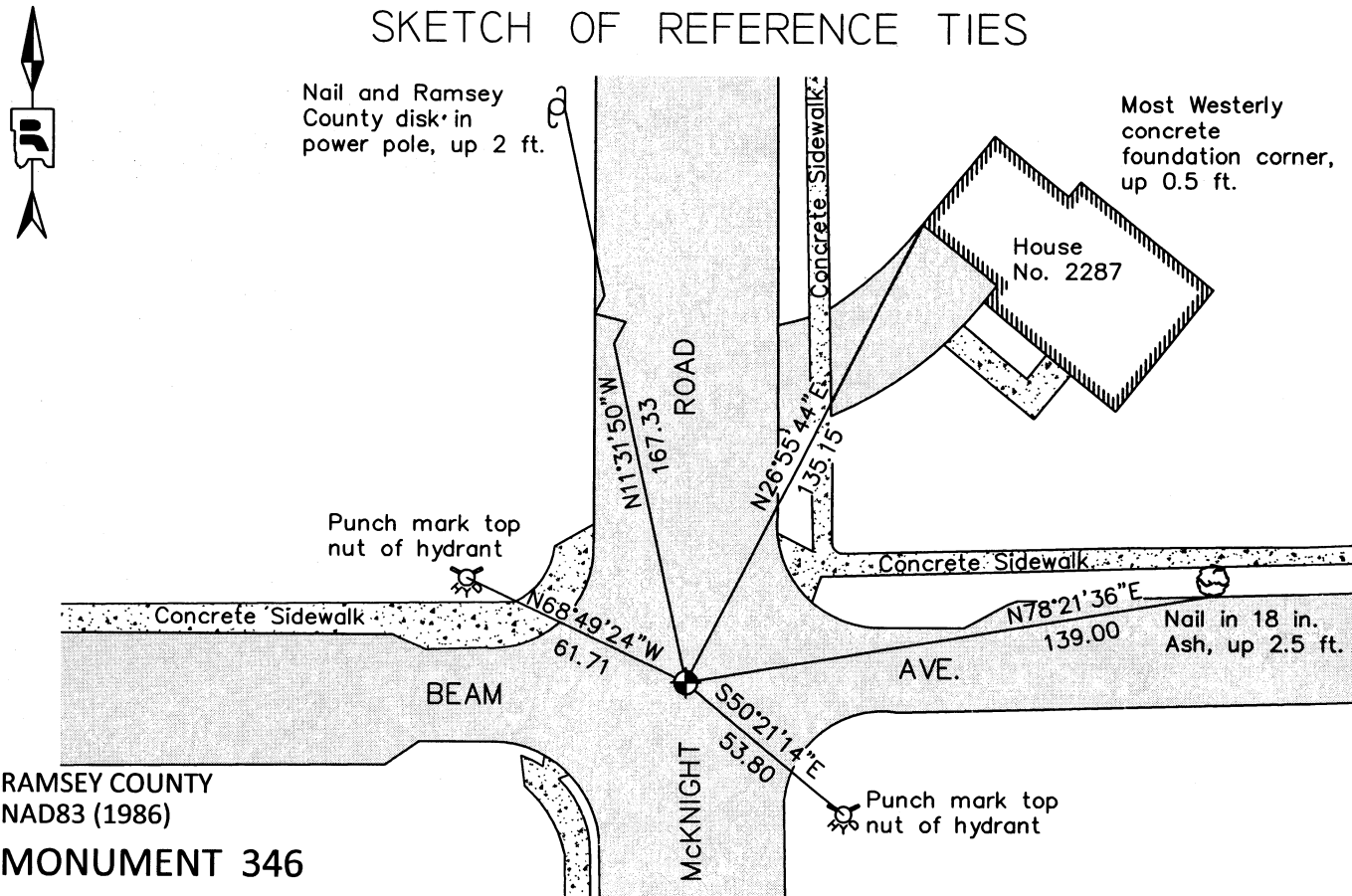
At the corner location shown on the sketch

On July 27, 2011 found a cast iron monument within a cast iron manhole assembly.

left monument as found raised/lowered monument removed monument (explain)

On _____ placed a _____

SKETCH OF REFERENCE TIES



RAMSEY COUNTY
NAD83 (1986)
MONUMENT 346

X= 597815.986 (Easting)
Y= 186644.383 (Northing)

ALL DISTANCES ARE SHOWN IN U.S. SURVEY FEET.
BEARINGS ARE FOR TIE REFERENCE PURPOSES ONLY.

Statements of evidence relative to this corner are on the following page.

I hereby certify that this document was prepared by me or under my direct supervision and that I am a duly Licensed Land Surveyor under the laws of the State of Minnesota.

Daniel D. Baar 7-31-12
Daniel D. Baar Date
Minnesota License No. 45816

- County Surveyor
 Deputy County Surveyor Land Surveyor

OFFICE OF COUNTY SURVEYOR
County of Ramsey

I hereby certify that this document was filed in the County Surveyor's office this 31st day of JULY, 20 12.

Craig W. Hinzman
Craig W. Hinzman, L.S.
Ramsey County Surveyor

MONUMENT 346

East Quarter Corner of Section 2, Township 29 North, Range 22 West

Set 1/4 Section Post, Burr Oak 10 N39°W 43; "Do" (Burr Oak) 11 S35°W 1.03;
November 29, 1847.

In establishing the 1/4 Corner between Section 1 and 2, found Government Witness
tree standing and also found old oak stake, set monument April 10, 1895.

Found 3/4 in. iron pipe down 0.5 ft., 1974.

Cast iron monument set by Don Campbell, May 23, 1974.

Checked monument, September 12, 1977.

Checked monument, July 18, 1984.

Tied monument, August 15, 1990.

Retied monument, September 23, 1999.

Retied monument, June 22, 2006.

Tied out monument for removal during road reconstruction, July 15, 2008.

Set PK nail at Corner position, September 26, 2008.

Set 20 in. cast iron monument within a cast iron manhole assembly, October 8, 2008.

Tied a cast iron monument within a cast iron manhole assembly, July 27, 2011.