

MONUMENT 345

CERTIFICATE OF LOCATION OF GOVERNMENT CORNER

Center of Section 2, Township 29 North, Range 22 West, County of Ramsey,
State of Minnesota.

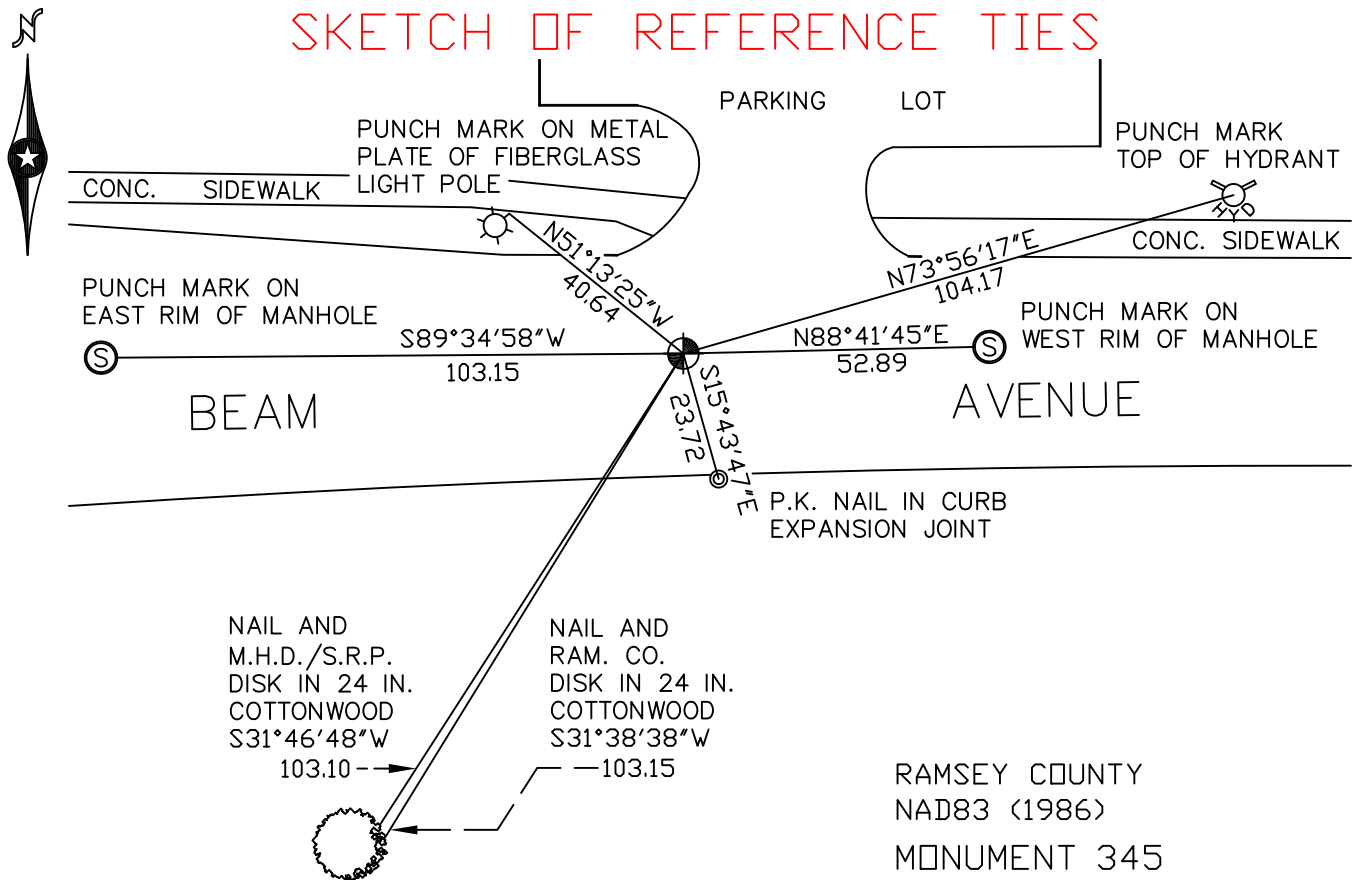
At the corner location shown on the sketch

On July 7, 2009 found a cast iron monument, within a cast iron manhole assembly.

left monument as found lowered monument removed monument (explain)

On _____ placed a _____

SKETCH OF REFERENCE TIES



ALL DISTANCES ARE SHOWN IN U.S. SURVEY FEET.
BEARINGS ARE FOR TIE REFERENCE PURPOSES ONLY.

RAMSEY COUNTY
NAD83 (1986)
MONUMENT 345

X= 595175.855 (Easting)
Y= 186612.826 (Northing)

Statements of evidence relative to this corner are on the following page(s).

I hereby certify that this document and the data contained herein was prepared by me or under my direct supervision this _____ day of _____, 20____.

SIGNATURE

Minnesota License No. _____

- County Surveyor
 Deputy County Surveyor Land Surveyor

OFFICE OF COUNTY SURVEYOR
County of Ramsey

I hereby certify that this document was filed in the County Surveyor's office on the _____ day of _____, 20____.

SIGNATURE

Michael D. Fiebiger, P.L.S.
Ramsey County Surveyor

MONUMENT 345

Found a cast iron monument, 1975.

Monument checked, September 12, 1977.

Monument destroyed by road construction; replaced by Don Campbell, no date given in field book.

Tied monument, April 15, 1988.

Monument tied, August 16, 1990.

Retied monument, April 7, 2003.

Monument destroyed by road construction, July 8, 2008.

Set a P.K. nail at corner position using established ties, September 8, 2008.

Set a 20 in. cast iron monument within a cast iron manhole assembly, October 8, 2008.

Retied monument, July 7, 2009.