

# MONUMENT 341

## CERTIFICATE OF LOCATION OF SECTION SUBDIVISION MONUMENT

Center of Section 4, Township 29 North, Range 22 West, County of Ramsey, State of Minnesota.

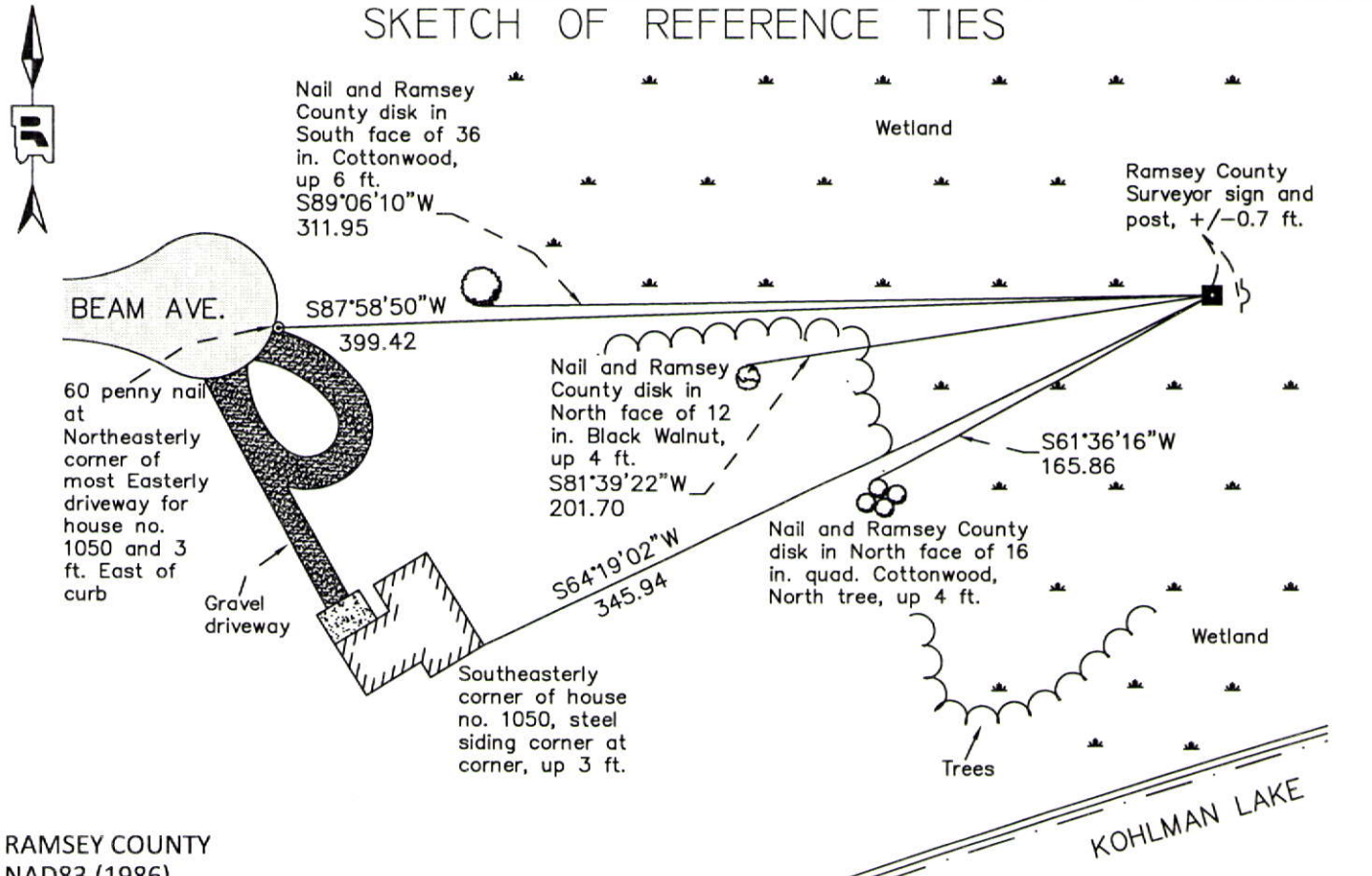
At the corner location shown on the sketch

On October 5, 2012 found an 8 in. x 8 in. granite monument with drill hole, up 0.4 ft.

left monument as found       raised/lowered monument       removed monument (explain)

On \_\_\_\_\_ placed a \_\_\_\_\_

### SKETCH OF REFERENCE TIES



RAMSEY COUNTY  
NAD83 (1986)  
**MONUMENT 341**

ALL DISTANCES ARE SHOWN IN U.S. SURVEY FEET.  
BEARINGS ARE FOR TIE REFERENCE PURPOSES ONLY.

Statements of evidence relative to this corner are on the following page.

I hereby certify that this document was prepared by me or under my direct supervision and that I am a duly Licensed Land Surveyor under the laws of the State of Minnesota.

Daniel D. Baar      12-30-14  
Daniel D. Baar      Date  
Minnesota License No. 45816

- County Surveyor       Land Surveyor  
 Deputy County Surveyor

OFFICE OF COUNTY SURVEYOR  
County of Ramsey

I hereby certify that this document was filed in the County Surveyor's office this 30th day of December, 20 14.

Craig W. Hinzman  
Craig W. Hinzman, L.S.  
Ramsey County Surveyor

# MONUMENT 341

Center of Section 4, Township 29 North, Range 22 West

Fixed the Center of Section 4 by intersection and set monument, October, 1900.

Found granite monument up 1.1 ft., tied out, November 27, 1974.

Checked monument, January 18, 1991.

Placed sign and post +/-0.3 ft. East of monument, October 3, 1996.

Found 8 in. x 8 in. granite monument with drill hole, up 0.4 ft. in wetland. Ramsey County Surveyor sign and post +/-0.7 ft. Easterly of drill hole; tied monument, October 5, 2012.