

MONUMENT 335NN

CERTIFICATE OF LOCATION OF GOVERNMENT CORNER

Monument on the North and South Quarter Line of Section 1, Township 29 North, Range 23 West, County of Ramsey, State of Minnesota.

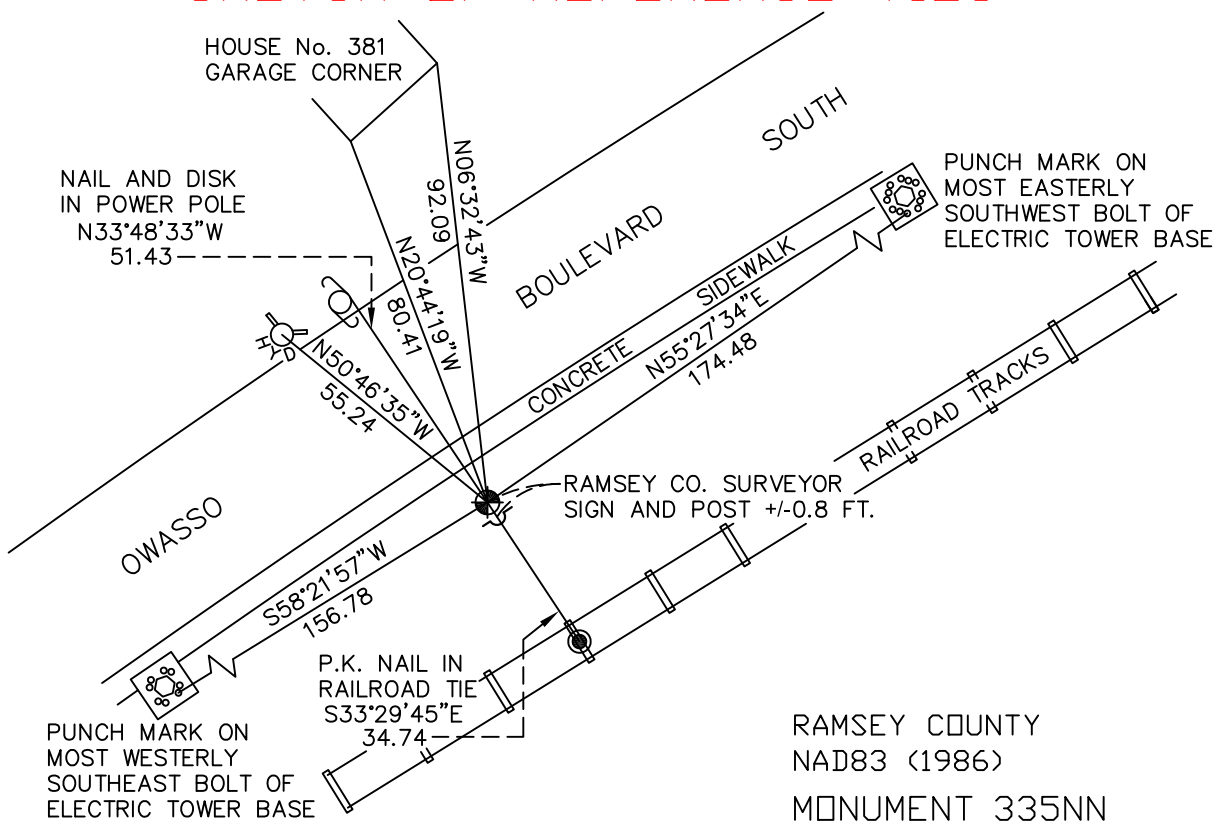
At the corner location shown on the sketch

On July 21, 2009 found a cast iron monument, down 0.8 feet.

left monument as found lowered monument removed monument (explain)

On _____ placed a _____

SKETCH OF REFERENCE TIES



RAMSEY COUNTY
NAD83 (1986)

MONUMENT 335NN

ALL DISTANCES ARE SHOWN IN U.S. SURVEY FEET.
BEARINGS ARE FOR TIE REFERENCE PURPOSES ONLY.

X= 569016.582 (Easting)
Y= 188748.350 (Northing)

Statements of evidence relative to this corner are on the following page(s).

I hereby certify that this document and the data contained herein was prepared by me or under my direct supervision this _____ day of _____, 20____.

SIGNATURE

Minnesota License No. _____

- County Surveyor
 Deputy County Surveyor Land Surveyor

OFFICE OF COUNTY SURVEYOR
County of Ramsey

I hereby certify that this document was filed in the County Surveyor's office on the _____ day of _____, 20____.

SIGNATURE

Michael D. Fiebiger, P.L.S.
Ramsey County Surveyor

MONUMENT 335NN

Placed a 20 in. cast iron monument on the north and south quarter line, south of Owasso Boulevard South, in railroad right-of-way, October 18, 1991.

Tied monument, found down 0.3 ft., April 23, 1992.

Monument 335NN is 300.00 ft. south of Monument 335N and is on line between Monument 335N and Monument 358; no date given in field book.

Retied monument, down 0.2 ft., August 8, 2002.

Retied monument, down 0.8 ft; set a sign and post 0.75 ft. south of monument, July 21, 2009.