

# MONUMENT 335

## CERTIFICATE OF LOCATION OF SECTION SUBDIVISION MONUMENT

Center of Section 1, Township 29 North, Range 23 West, County of Ramsey, State of Minnesota.

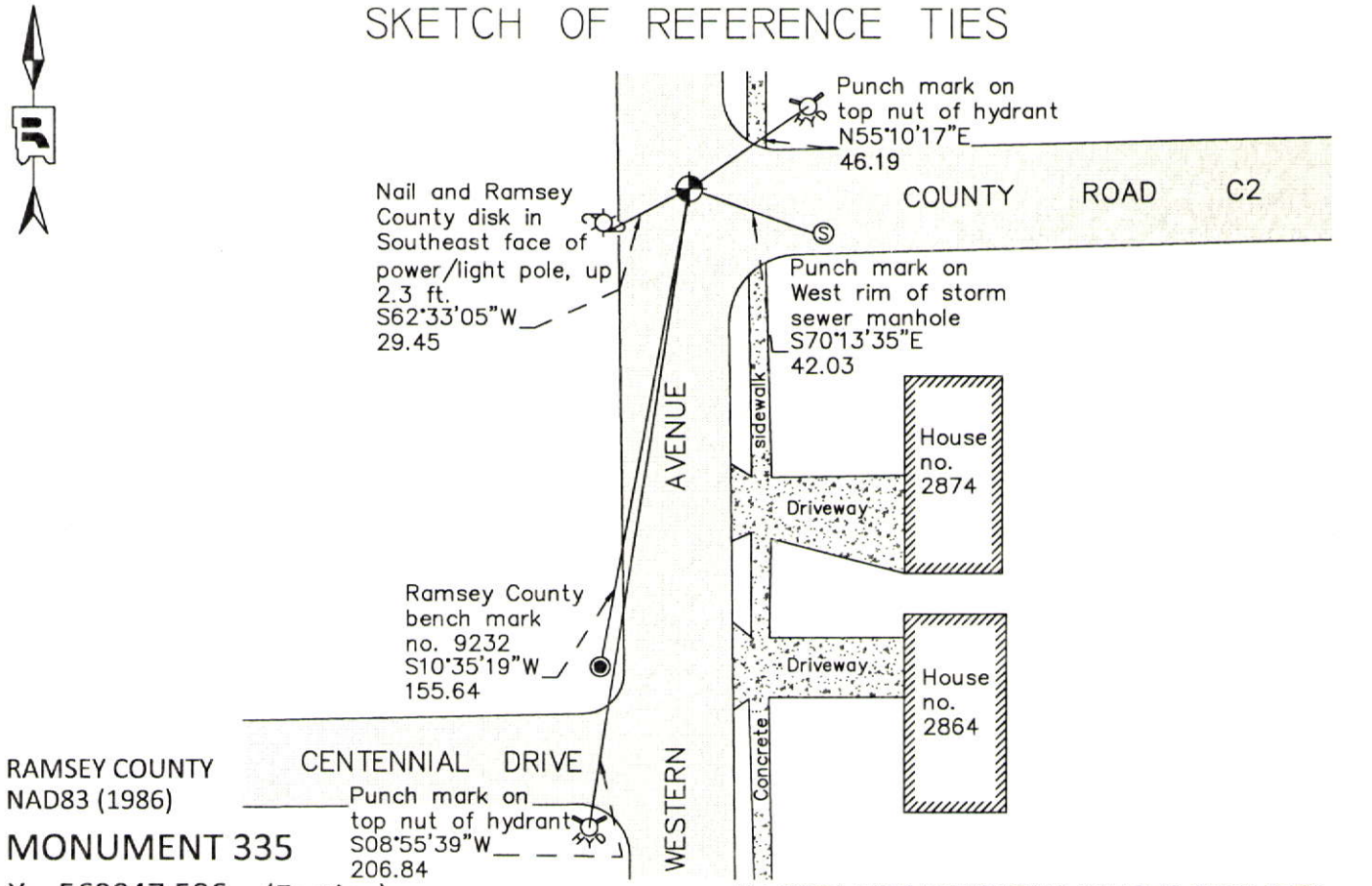
At the corner location shown on the sketch

On June 6, 2012 found a cast iron monument down 0.2 ft. in bituminous road.

left monument as found       raised/lowered monument       removed monument (explain)

On \_\_\_\_\_ placed a \_\_\_\_\_

### SKETCH OF REFERENCE TIES



RAMSEY COUNTY  
NAD83 (1986)  
**MONUMENT 335**

X= 569047.586 (Easting)  
Y= 186434.315 (Northing)

ALL DISTANCES ARE SHOWN IN U.S. SURVEY FEET.  
BEARINGS ARE FOR TIE REFERENCE PURPOSES ONLY.

Statements of evidence relative to this corner are on the following page.

I hereby certify that this document was prepared by me or under my direct supervision and that I am a duly Licensed Land Surveyor under the laws of the State of Minnesota.

Daniel D. Baar      12-30-14  
Daniel D. Baar      Date  
Minnesota License No. 45816

- County Surveyor       Land Surveyor  
 Deputy County Surveyor

OFFICE OF COUNTY SURVEYOR  
County of Ramsey

I hereby certify that this document was filed in the County Surveyor's office this 30th day of December, 20 14.

Craig W. Hinzman  
Craig W. Hinzman, L.S.  
Ramsey County Surveyor

# MONUMENT 335

Center of Section 1, Township 29 North, Range 23 West

Fixed the Center of Section by Intersection, nothing to tie to, January 13, 1898.

Set monument, June 22, 1898.

Re-established by intersection, re-set monument, May 4, 1934.

Checked monument, November, 1954.

Checked monument, May, 1961.

TSCHIDA OWASSO HILLS PLAT NO.2 calls to a stone monument at the Center of Section 1, Township 29 , Range 23, November 21, 1963.

OWASSODALE plat shows an iron monument at the Center of Section 1, Township 29 , Range 23, July 2, 1964.

Found 1/2 in. diameter iron over granite monument, down 0.7 ft., July 22, 1974.

Placed a short (4-5/8 in.) cast iron monument, July 8, 1975.

Tied monument, March 26, 1985.

Monument destroyed by City of Roseville reconstruction of Western Ave., 1987.

Reset monument position using traverse information. Dug hole to set monument and hit a granite monument, down 19 in., May, 1991.

Reset 4 1/2 in. cast iron monument in concrete. Positioned monument +/- 0.03 ft. West to match granite monument location, June 4, 1991.

Tied monument, August 8, 2002.

Retied monument, August 24, 2007.

Checked condition of cast iron monument, down 0.2 ft. in bituminous road, and ties, June 6, 2012.