

# MONUMENT 333

## CERTIFICATE OF LOCATION OF GOVERNMENT CORNER

Center of Section 2, Township 29 North, Range 23 West, County of Ramsey,  
State of Minnesota.

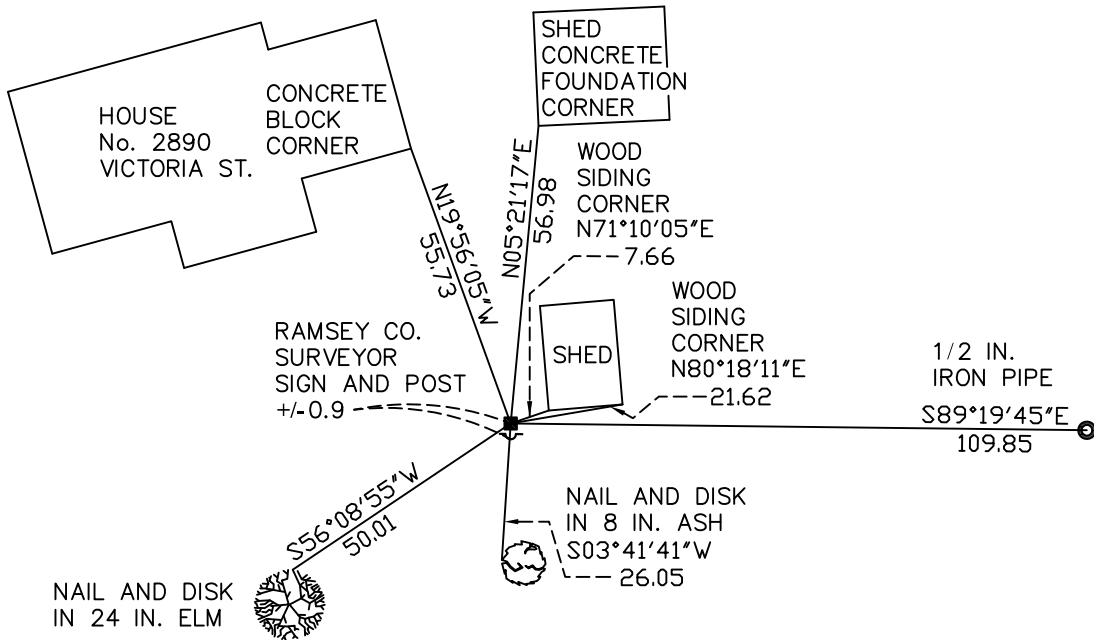
At the corner location shown on the sketch

On April 5, 2010 found a granite monument, up 0.7 feet.

left monument as found     lowered monument     removed monument (explain)

On \_\_\_\_\_ placed a \_\_\_\_\_

### SKETCH OF REFERENCE TIES



RAMSEY COUNTY  
NAD83 (1986)  
MONUMENT 333

X= 563790.629 (Easting)  
Y= 186411.957 (Northing)

ALL DISTANCES ARE SHOWN IN U.S. SURVEY FEET.  
BEARINGS ARE FOR TIE REFERENCE PURPOSES ONLY.

Statements of evidence relative to this corner are on the following page(s).

I hereby certify that this document and the data contained herein was prepared by me or under my direct supervision this \_\_\_\_\_ day of \_\_\_\_\_, 20\_\_\_\_.

SIGNATURE

Minnesota License No. \_\_\_\_\_

- County Surveyor  
 Deputy County Surveyor     Land Surveyor

OFFICE OF COUNTY SURVEYOR  
County of Ramsey

I hereby certify that this document was filed in the County Surveyor's office on the \_\_\_\_\_ day of \_\_\_\_\_, 20\_\_\_\_.

SIGNATURE

Michael D. Fiebiger, P.L.S.  
Ramsey County Surveyor

## MONUMENT 333

Found a granite monument on edge of cut. Placed a fence post level to granite to hold monument steady. Tied monument, July 29, 1974.

Checked monument, July 14, 1977.

Retied monument, June 5, 1981.

Checked monument, January 18, 1991.

Set a sign and post +/-1 ft. south of monument, September 19, 1996.

Retied monument, April 5, 2010.