

MONUMENT 331

CERTIFICATE OF LOCATION OF FOUND MONUMENT

Center of Section 3, Township 29 North, Range 23 West, County of Ramsey, State of Minnesota.

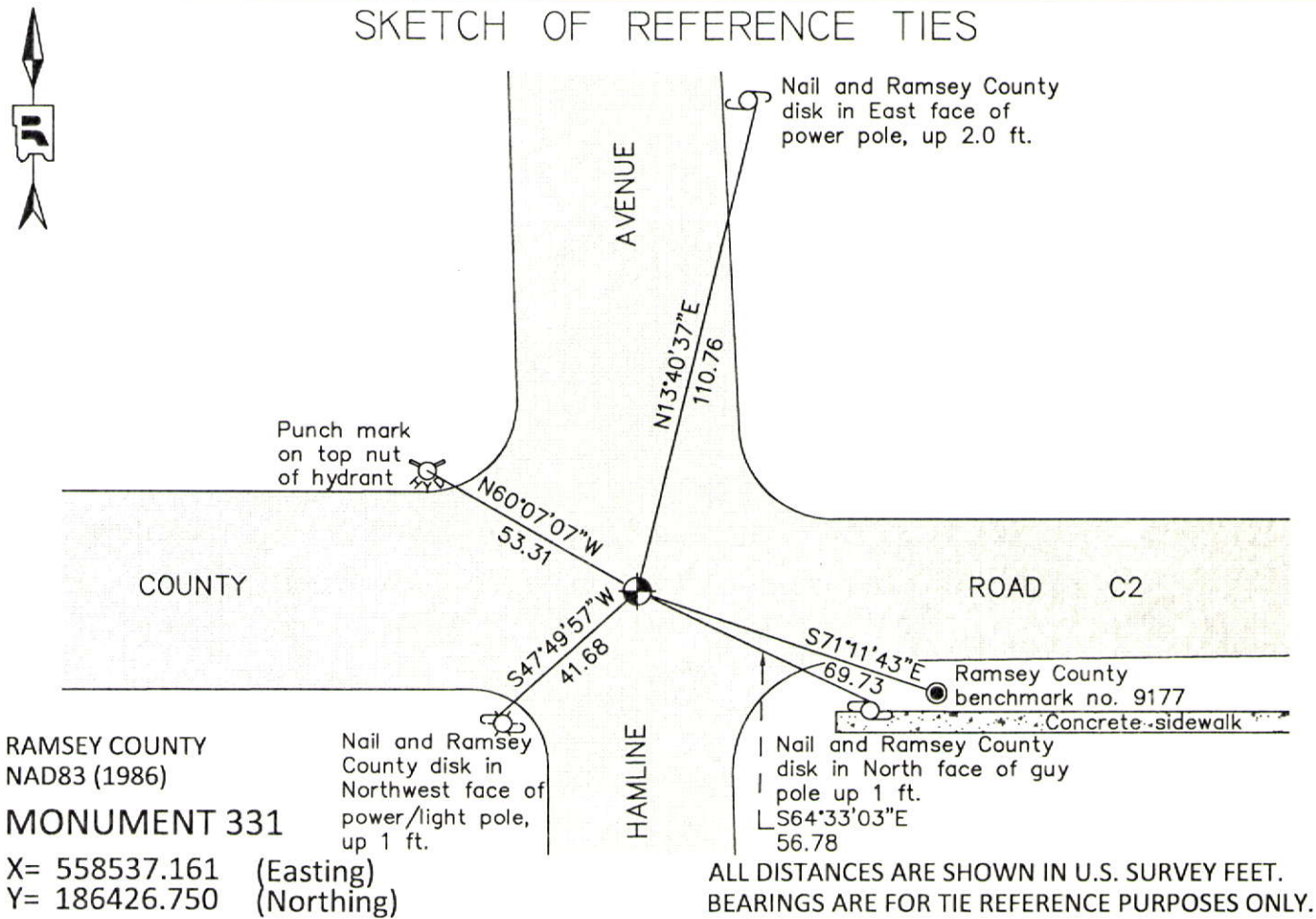
At the corner location shown on the sketch

On June 20, 2012 found a cast iron monument in bituminous road, down 0.2 ft.

left monument as found raised/lowered monument removed monument (explain)

On _____ placed a _____

SKETCH OF REFERENCE TIES



Statements of evidence relative to this corner are on the following page.

I hereby certify that this document was prepared by me or under my direct supervision and that I am a duly Licensed Land Surveyor under the laws of the State of Minnesota.

Daniel D. Baar 12-30-14
Daniel D. Baar Date

Minnesota License No. 45816

- County Surveyor Land Surveyor
 Deputy County Surveyor

OFFICE OF COUNTY SURVEYOR
County of Ramsey

I hereby certify that this document was filed in the County Surveyor's office this 30th day of December, 20 14.

Craig W. Hinzman
Craig W. Hinzman, L.S.
Ramsey County Surveyor

MONUMENT 331

Center of Section 3, Township 29 North, Range 23 West

Fixed the Center of Section 3 by Intersection, January 6, 1898.

Set monument, May 9, 1898.

Set iron, February 1, 1963.

Found a 3/4 in. diameter, 8 in. long bent iron. Dug down 3.7 ft. and found nothing.
Placed a cast iron monument, August 28, 1974.

Tied monument, found down 0.2 ft., November 27, 1990.

Retied monument, December 1, 1997.

Retied monument, July 17, 2002.

Retied monument, August 3, 2007.

Checked condition of cast iron monument and ties, June 20, 2012.