

MONUMENT 33

CERTIFICATE OF LOCATION OF SECTION SUBDIVISION MONUMENT

Center of Section 3, Township 30 North, Range 23 West, County of Ramsey, State of Minnesota.

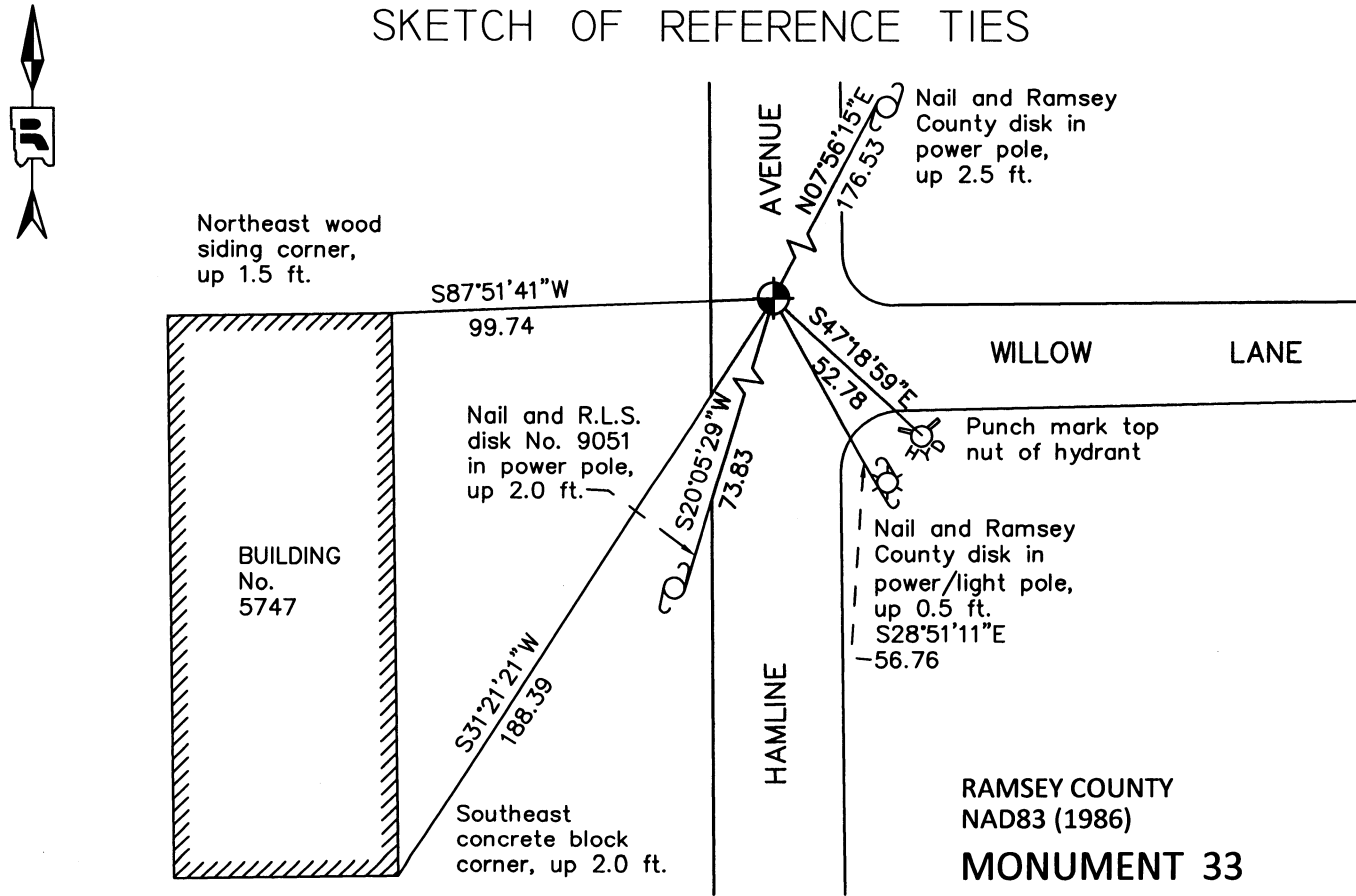
At the corner location shown on the sketch

On November 4, 2011 found a cast iron monument, down 0.4 ft.

left monument as found raised/lowered monument removed monument (explain)

On _____ placed a _____

SKETCH OF REFERENCE TIES



ALL DISTANCES ARE SHOWN IN U.S. SURVEY FEET.
BEARINGS ARE FOR TIE REFERENCE PURPOSES ONLY.

X= 558170.041 (Easting)
Y= 218270.671 (Northing)

Statements of evidence relative to this corner are on the following page.

I hereby certify that this document was prepared by me or under my direct supervision and that I am a duly Licensed Land Surveyor under the laws of the State of Minnesota.

Daniel D. Baar 9-6-12
Daniel D. Baar Date
Minnesota License No. 45816

County Surveyor Land Surveyor
 Deputy County Surveyor

OFFICE OF COUNTY SURVEYOR
County of Ramsey

I hereby certify that this document was filed in the County Surveyor's office this 5th day of September, 2012.

Craig W. Hinzman
Craig W. Hinzman, L.S.
Ramsey County Surveyor

MONUMENT 33

Center of Section 3, Township 30 North, Range 23 West

Fixed the center of section 3 by intersection and set monument, August, 1900.

Found granite monument down 0.4 ft. and tied, August 23, 1974.

Set short (4-1/2 in.) cast iron monument on top of granite monument, November 18, 1974.

Cast iron monument down 0.2 ft., retied, July 18, 1990.

Retied monument, March 21, 2001.

Retied monument, August 18, 2006.

Retied a cast iron monument, down 0.4 ft. in bituminous road, November 4, 2011.