

# MONUMENT 328

## CERTIFICATE OF LOCATION OF FOUND MONUMENT

East Quarter Corner of Section 5, Township 29 North, Range 23 West, County of Ramsey, State of Minnesota.

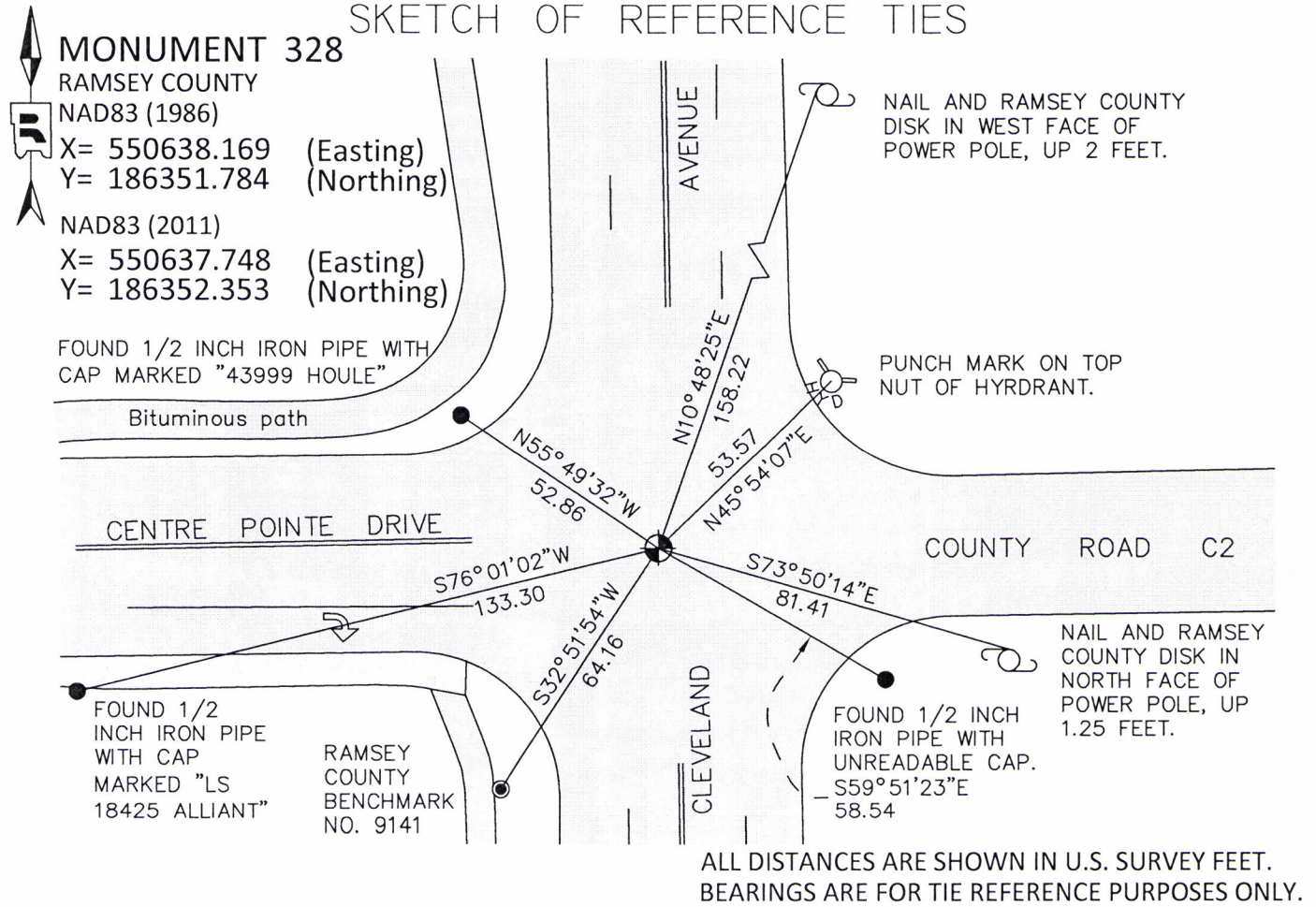
At the corner location shown on the sketch

On \_\_\_\_\_ found \_\_\_\_\_

left monument as found     
  raised/lowered monument     
  removed monument (explain)

On October 13, 2017 placed a 20 inch "Ramsey County" cast iron monument within a cast iron manhole assembly, and tied monument. Manhole assembly set by contractor.

### SKETCH OF REFERENCE TIES



Statements of evidence relative to this corner are on the following page.

I hereby certify that this document was prepared by me or under my direct supervision and that I am a duly Licensed Land Surveyor under the laws of the State of Minnesota.

Daniel D. Baar      7-17-19  
 Daniel D. Baar      Date  
 Minnesota License No. 45816

- County Surveyor       Land Surveyor  
 Deputy County Surveyor

OFFICE OF COUNTY SURVEYOR  
 County of Ramsey

I hereby certify that this document was filed in the County Surveyor's office this 17<sup>th</sup> day of July, 20 19.

Daniel D. Baar  
 Daniel D. Baar, L.S.  
 Ramsey County Surveyor

# MONUMENT 328

## East Quarter Corner of Section 5, Township 29 North, Range 23 West

|                    |  |
|--------------------|--|
| November 2, 1847   | South corrected between Sections 4 and 5, at 31.60 chains, to lake and set post for witness corner to 1/4 Section. B. Oak 10 N9W 47, B. Oak 14 N50E 1.37<br>Isaac Higbee, Deputy Surveyor                    |
| November 30, 1896  | The 1/4 corner between Sections 4 and 5 is in Wilson Lake. Ramsey County Re-monumentation Survey.  |
| Date Unknown       | Established and placed monument (after Lake Wilson was drained). Ramsey County Engineer's Office.  |
| 1974               | Found miscellaneous iron. Ramsey County Surveyor's Office.   |
| October 31, 1975   | Found granite monument down 1.6 feet (not the same position as the iron). Ramsey County Surveyor's Office.   |
| November 5, 1975   | Placed a cast iron monument. Ramsey County Surveyor's Office.  |
| January 29, 1976   | Re-tied monument. Ramsey County Surveyor's Office.   |
| 1978               | Monument destroyed by construction. Ramsey County Surveyor's Office.   |
| March, 1981        | Reset cast iron monument. Ramsey County Surveyor's Office.   |
| August 14, 1990    | Tied monument. Ramsey County Surveyor's Office.  |
| September 18, 1996 | Tied monument and removed for milling. Ramsey County Surveyor's Office.  |
| August 29, 1997    | Set a 20 inch cast iron monument. Ramsey County Surveyor's Office.   |
| July 15, 2002      | Tied monument. Ramsey County Surveyor's Office.  |
| August 2, 2007     | Retied monument. Ramsey County Surveyor's Office.  |
| July 13, 2012      | Retied cast iron monument down 0.1 feet. Ramsey County Surveyor's Office.  |
| May 3, 2017        | Found cast iron monument, flush. Offset monument prior to removal due to road construction. Ramsey County Surveyor's Office.   |
| Fall, 2017         | Monument removed by contractor due to road construction. Exact date unknown. Ramsey County Surveyor's Office.  |
| October 13, 2017   | Placed a 20 inch "Ramsey County" cast iron monument within a manhole assembly using construction offsets and local ties. Manhole assembly set by contractor. Tied monument. Ramsey County Surveyor's Office. |