

MONUMENT 327E

CERTIFICATE OF LOCATION OF FOUND MONUMENT

Center of Section 5, Township 29 North, Range 23 West, County of Ramsey, State of Minnesota.

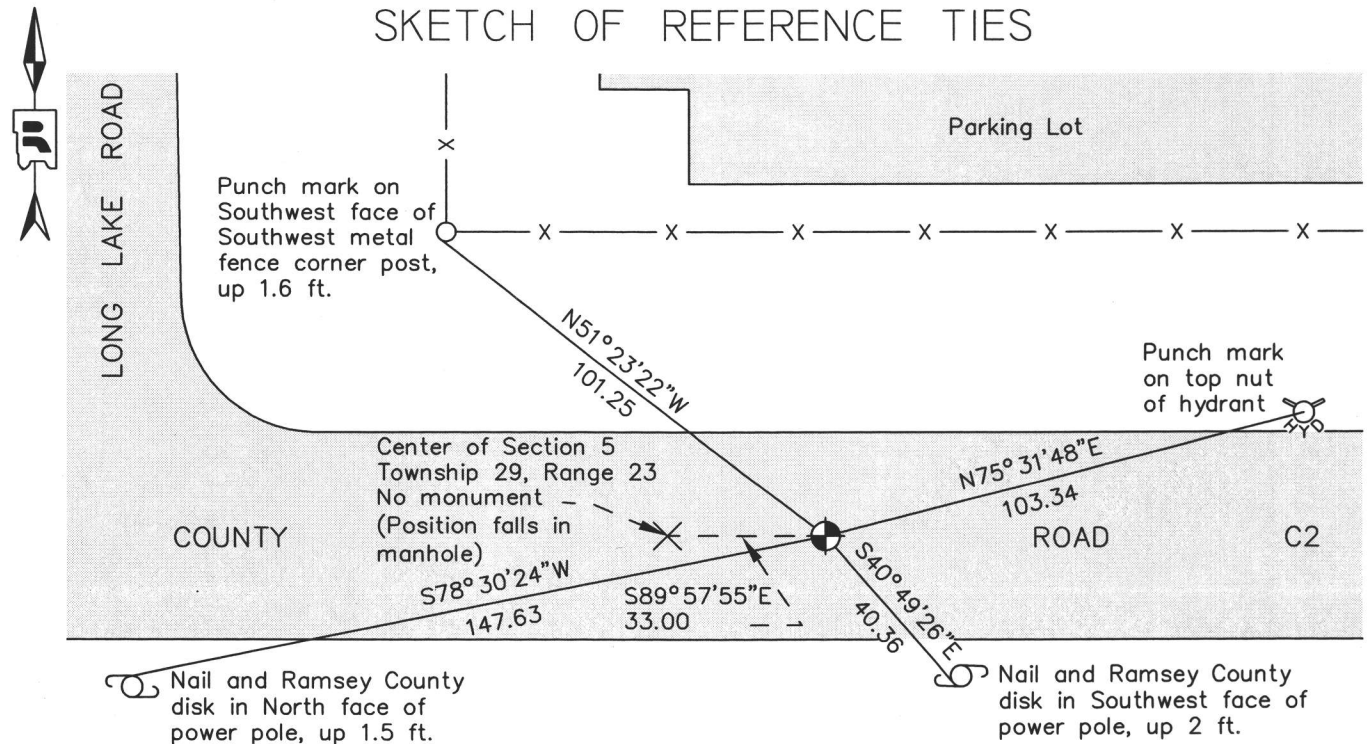
At the corner location shown on the sketch

On June 7, 2012 found a cast iron monument, down 0.2 ft. in bituminous road, lettered "WITNESS CORNER", 33.00 feet east of Center position..

left monument as found
 raised/lowered monument
 removed monument (explain)

On _____ placed a _____

SKETCH OF REFERENCE TIES



RAMSEY COUNTY
NAD83 (1986)

MONUMENT 327E

X= 548029.475 (Easting)
Y= 186353.340 (Northing)

ALL DISTANCES ARE SHOWN IN U.S. SURVEY FEET.
BEARINGS ARE FOR TIE REFERENCE PURPOSES ONLY.

Statements of evidence relative to this corner are on the following page.

I hereby certify that this document was prepared by me or under my direct supervision and that I am a duly Licensed Land Surveyor under the laws of the State of Minnesota.

Daniel D. Baar 8-19-15
Daniel D. Baar Date
Minnesota License No. 45816

- County Surveyor
 Land Surveyor
 Deputy County Surveyor

OFFICE OF COUNTY SURVEYOR
County of Ramsey

I hereby certify that this document was filed in the County Surveyor's office this 19th day of August, 2015.

Craig W. Hinzman
Craig W. Hinzman, L.S.
Ramsey County Surveyor

MONUMENT 327E

Center of Section 5, Township 29 North, Range 23 West

October 1, 1900	Fixed the Center of Section 5 by Intersection. Ramsey County Resurvey
October 1, 1900	Set monument. Ramsey County Resurvey
December, 1946	Checked monument. Ramsey County Engineer's Office
Unknown Date, 1975	Found a manhole at monument location; no ties left. Ramsey County Surveyor's Office
June 12, 1987	Corner location occupied and measurements were taken to the East Quarter corner and to the South Quarter corner. Ramsey County Surveyor's Office
Unknown Date	Placed a 20 in. cast iron monument 33.00 feet east on line to the East Quarter Corner of Section 5, no date in field book, Ramsey County Surveyor's Office.
May 16, 1990	Tied monument. Ramsey County Surveyor's Office
September 28, 1994	Monument down 1.5 inch Ramsey County Surveyor's Office
July 16, 2002	Tied monument. Ramsey County Surveyor's Office
August 2, 2007	Retied monument. Ramsey County Surveyor's Office
June 7, 2012	Checked condition of cast iron monument, down 0.2 feet in bituminous road, and ties. Ramsey County Surveyor's Office