

MONUMENT 326

CERTIFICATE OF LOCATION OF FOUND MONUMENT

West Quarter Corner of Section 5, Township 29 North, Range 23 West, County of Ramsey, State of Minnesota.

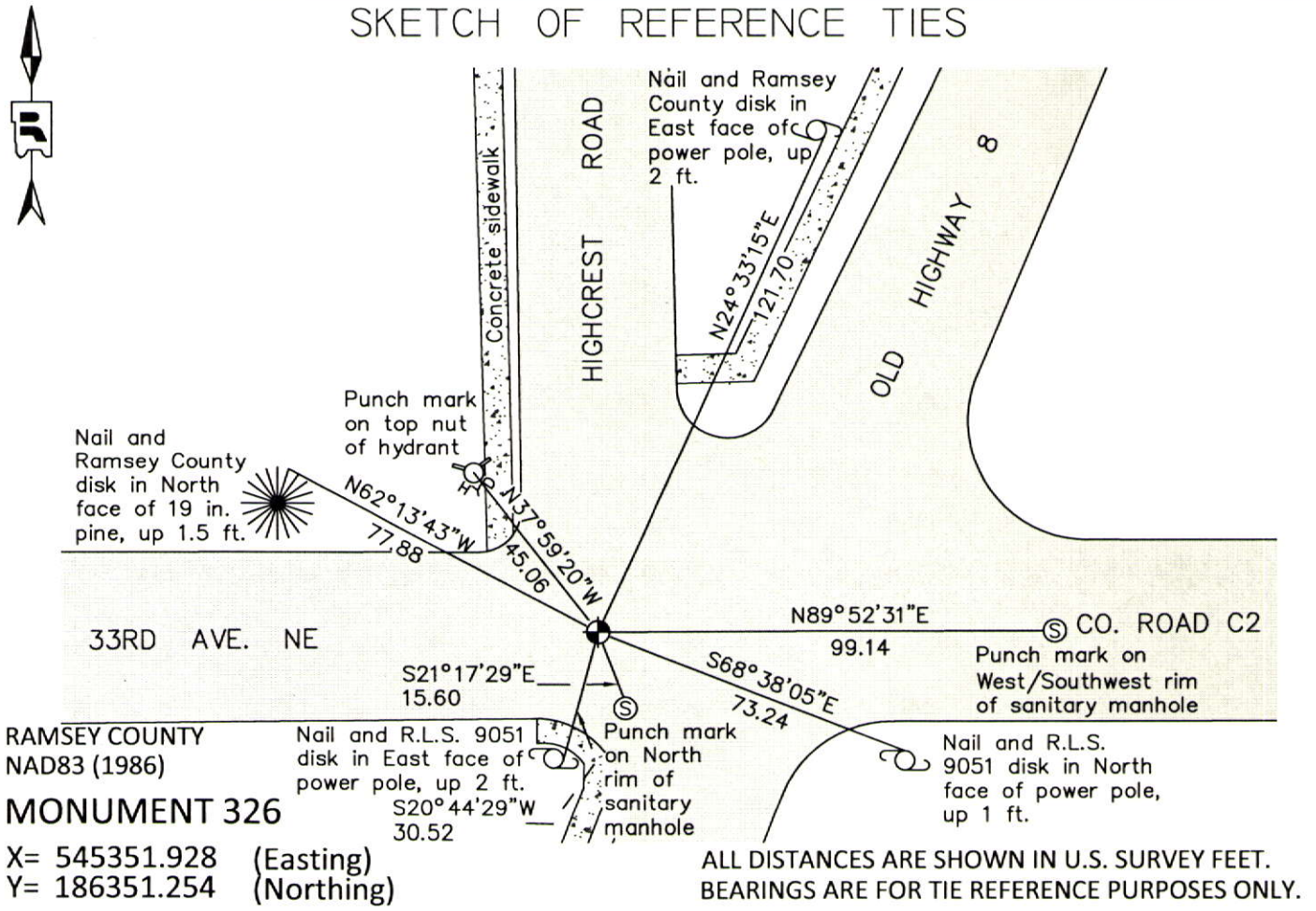
At the corner location shown on the sketch

On June 7, 2012 found a cast iron monument in bit road, down 0.08 ft.

left monument as found raised/lowered monument removed monument (explain)

On _____ placed a _____

SKETCH OF REFERENCE TIES



Statements of evidence relative to this corner are on the following page.

I hereby certify that this document was prepared by me or under my direct supervision and that I am a duly Licensed Land Surveyor under the laws of the State of Minnesota.

Daniel D. Baar 12-30-14
 Daniel D. Baar Date
 Minnesota License No. 45816

- County Surveyor Land Surveyor
 Deputy County Surveyor

OFFICE OF COUNTY SURVEYOR
 County of Ramsey

I hereby certify that this document was filed in the County Surveyor's office this 30th day of December, 20 14.

Craig W. Hinzman
 Craig W. Hinzman, L.S.
 Ramsey County Surveyor

MONUMENT 326

West Quarter Corner of Section 5, Township 29 North, Range 23 West

Set 1/4 Section post, Bur Oak 10 N72°E 1.28, W. Oak 14 S23°W 50,
November 3, 1847.

In establishing the 1/4 Corner between Sections 5 and 6, ran straight line North and South, prorated and fixed 1/4 Corner; no Government witness trees, January, 1900.

Set monument, April, 1900.

Found a cast iron monument flush and tied, July 31, 1974.

Monument destroyed by construction. Cast iron monument reset by Hennepin Co., 1980.

Tied monument, August 14, 1990.

Retied monument, July 15, 2002.

Retied monument, July 9, 2007.

Found cast iron monument 0.1' down in bituminous road in good condition. Did not remeasure ties, May 2, 2011. (Hennepin County Surveyor's Office)

Checked cast iron monument, down 0.08 ft. in bituminous road, and ties, June 7, 2012.