

MONUMENT 325

CERTIFICATE OF LOCATION OF GOVERNMENT CORNER

Northeast Corner of Section 1, Township 29 North, Range 22 West, County of Ramsey, State of Minnesota.

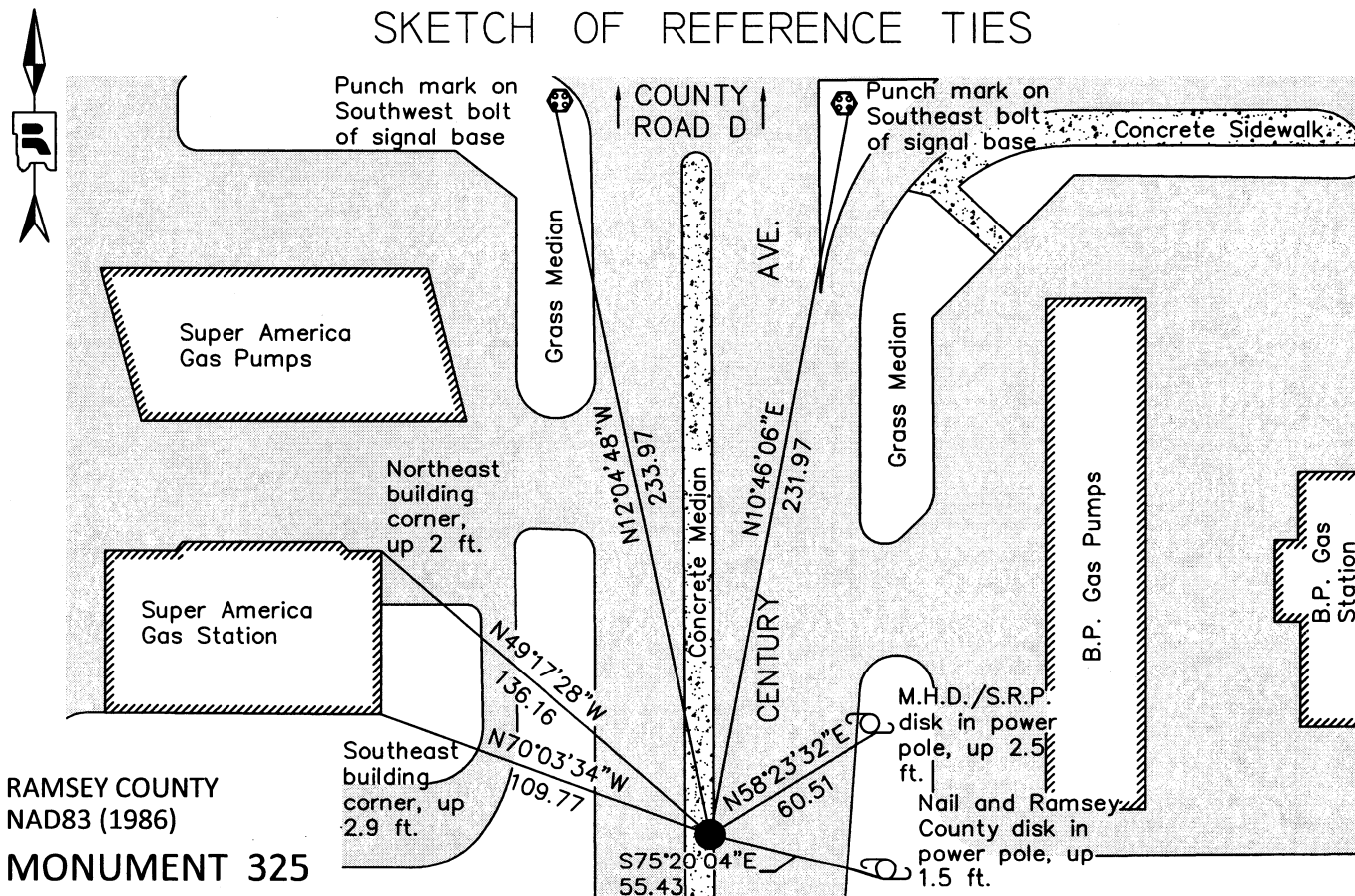
At the corner location shown on the sketch

On July 28, 2011 found a 3/4 in. solid pin with a punch mark at center, down 0.05 ft in lip of curb

left monument as found raised/lowered monument removed monument (explain)

On _____ placed a _____

SKETCH OF REFERENCE TIES



RAMSEY COUNTY
NAD83 (1986)

MONUMENT 325

X= 603041.637 (Easting)
Y= 189464.878 (Northing)

ALL DISTANCES ARE SHOWN IN U.S. SURVEY FEET.
BEARINGS ARE FOR TIE REFERENCE PURPOSES ONLY.

Statements of evidence relative to this corner are on the following page.

I hereby certify that this document was prepared by me or under my direct supervision and that I am a duly Licensed Land Surveyor under the laws of the State of Minnesota.

Daniel D. Baar 7-31-12
Daniel D. Baar Date

Minnesota License No. 45816

- County Surveyor Land Surveyor
 Deputy County Surveyor

OFFICE OF COUNTY SURVEYOR
County of Ramsey

I hereby certify that this document was filed in the County Surveyor's office this 31st day of JULY, 20 12.

Craig W. Hinzman
Craig W. Hinzman, L.S.
Ramsey County Surveyor

MONUMENT 325

Northeast Corner of Section 1, Township 29 North, Range 22 West

Intersect Range line 100 lks. North of temporary six mile corner, set post for Cor. to Town. 29 and 30 N; R. 21 and 22 W, B. Oak 6 S22°E 45, B. Oak 10 S54°W 61, October 15, 1847.

Found iron monument at Northeast Corner of Section 1 set by State, Government Witness trees gone, tied September 25, 1897.

Found 3/4 in. iron pin with MN/DOT cap flush, 1975.

Retied monument, November 30, 1982.

Retied monument, August 8, 1990.

Retied monument in crack between curb gutter and bituminous, September 21, 1999.

Removed bituminous around pin and replaced with concrete, July 2, 2005.

Retied monument, June 26, 2006.

Retied a 3/4 in. solid pin with a punch mark at center, down 0.05 ft. July 28, 2011.