

MONUMENT 324N

CERTIFICATE OF LOCATION OF GOVERNMENT CORNER

Reference Monument on Line North of the South Quarter Corner of Section 36, Township 30 North, Range 22 West, County of Ramsey, State of Minnesota.

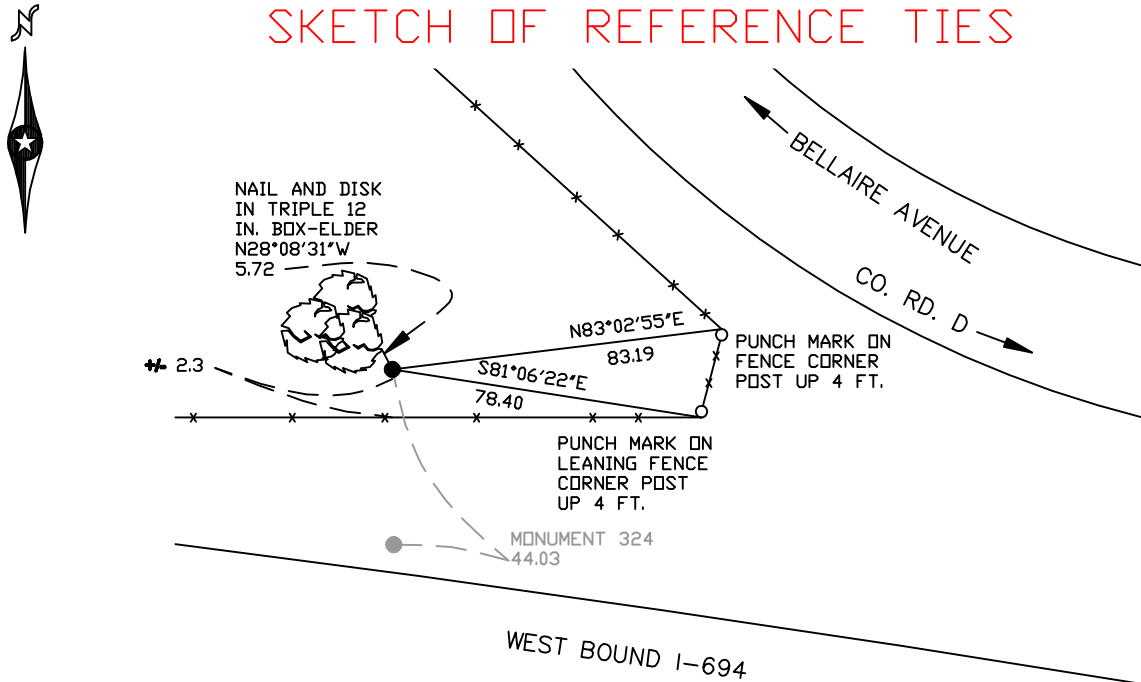
At the corner location shown on the sketch

On June 21, 2006 found a 3/4 inch iron pin.

left monument as found lowered monument removed monument (explain)

On _____ placed a _____

SKETCH OF REFERENCE TIES



RAMSEY COUNTY
NAD83 (1986)

MONUMENT 324N

X= 600403.208 (Easting)
Y= 189496.605 (Northing)

ALL DISTANCES ARE SHOWN IN U.S. SURVEY FEET.
BEARINGS ARE FOR TIE REFERENCE PURPOSES ONLY.

Statements of evidence relative to this corner are on the following page(s).

I hereby certify that this document and the data contained herein was prepared by me or under my direct supervision this _____ day of _____, 20____.

SIGNATURE

Minnesota License No. _____

County Surveyor Land Surveyor

OFFICE OF COUNTY SURVEYOR

County of Ramsey

I hereby certify that this document was filed in the County Surveyor's office on the ____ day of _____, 20____.

David D. Claypool, P.L.S., County Surveyor

By _____, Deputy

MONUMENT 324N

A 3/4 in. iron pin set by MN/DOT to reference line and south quarter corner of Section 36, August, 1970.

Tied monument, September 30, 1999.

Retied monument, June 21, 2006.