

MONUMENT 321

CERTIFICATE OF LOCATION OF GOVERNMENT CORNER

Northeast Corner of Section 3, Township 29 North, Range 22 West, County of Ramsey, State of Minnesota.

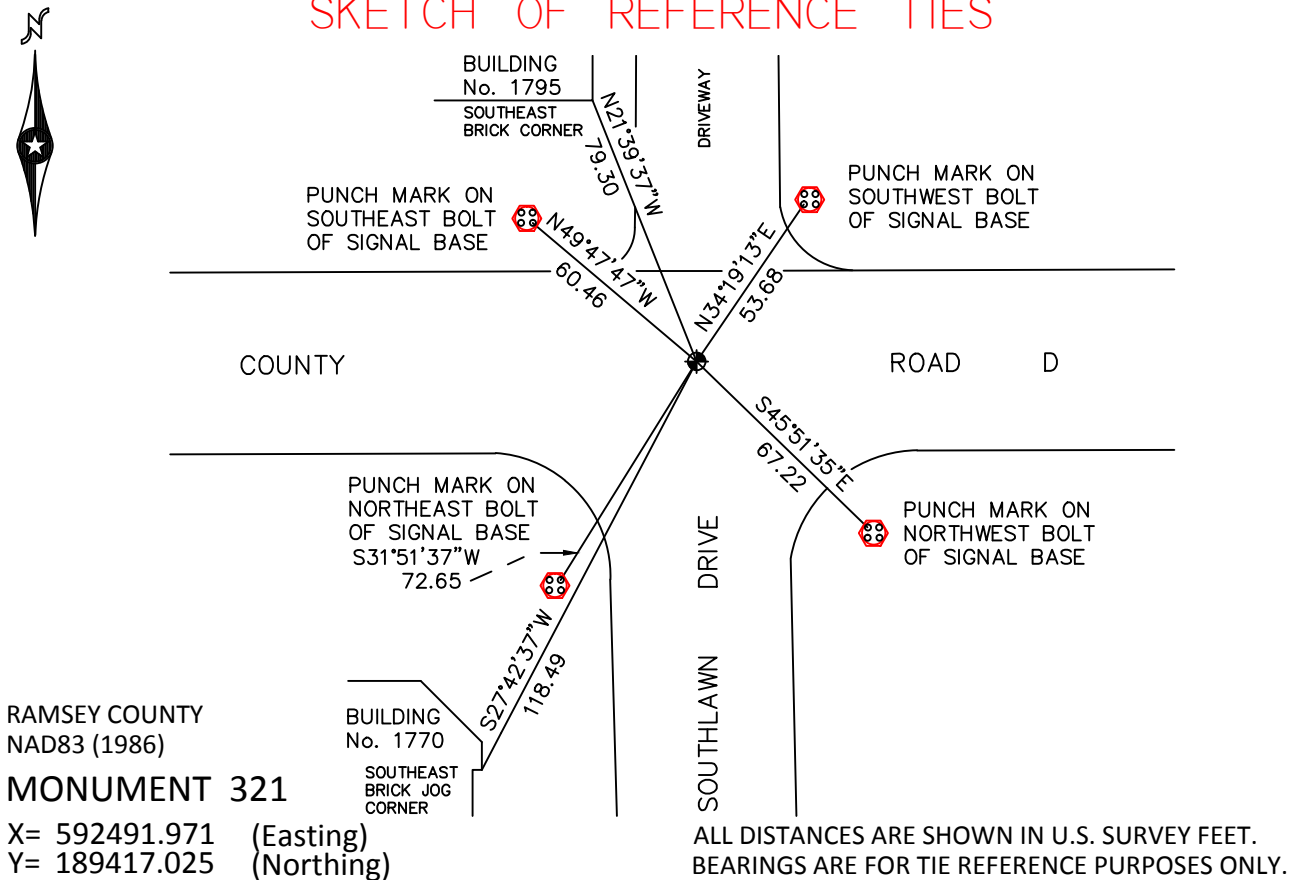
At the corner location shown on the sketch

On August 24, 2010 found a cast iron monument, within a cast iron manhole assembly.

left monument as found raised/lowered monument removed monument (explain)

On _____ placed a _____

SKETCH OF REFERENCE TIES



Statements of evidence relative to this corner are on the following page.

I hereby certify that this document has been prepared by me or under my direct supervision this _____ day of _____, 20____.

SIGNATURE
 Minnesota License No. _____
 County Surveyor
 Deputy County Surveyor Land Surveyor

OFFICE OF COUNTY SURVEYOR
 County of Ramsey

I hereby certify that this document was filed in the County Surveyor's office this _____ day of _____, 20____.

SIGNATURE
 Craig W. Hinzman, L.S.
 Ramsey County Surveyor

MONUMENT 321

Found a 3/4 in. iron pipe in concrete on top of granite monument, 1975.

Monument destroyed by construction; monument reset by Don Campbell, no date in survey field book.

Checked monument, June 24, 1977.

Tied monument, April 15, 1988.

Checked monument, August 8, 1990.

Retied monument, September 23, 1999.

Retied monument, June 22, 2006.

Tied monument for removal during construction, December 7, 2009.

Reset a 20 in. cast iron monument, within a cast iron manhole assembly. Cast iron manhole assembly set by others, August 20, 2010.

Tied monument, August 24, 2010.