

MONUMENT 315N

CERTIFICATE OF LOCATION OF GOVERNMENT CORNER

Witness Monument to the East Quarter Corner of Section 31, Township 30 North, Range 22 West, County of Ramsey, State of Minnesota.

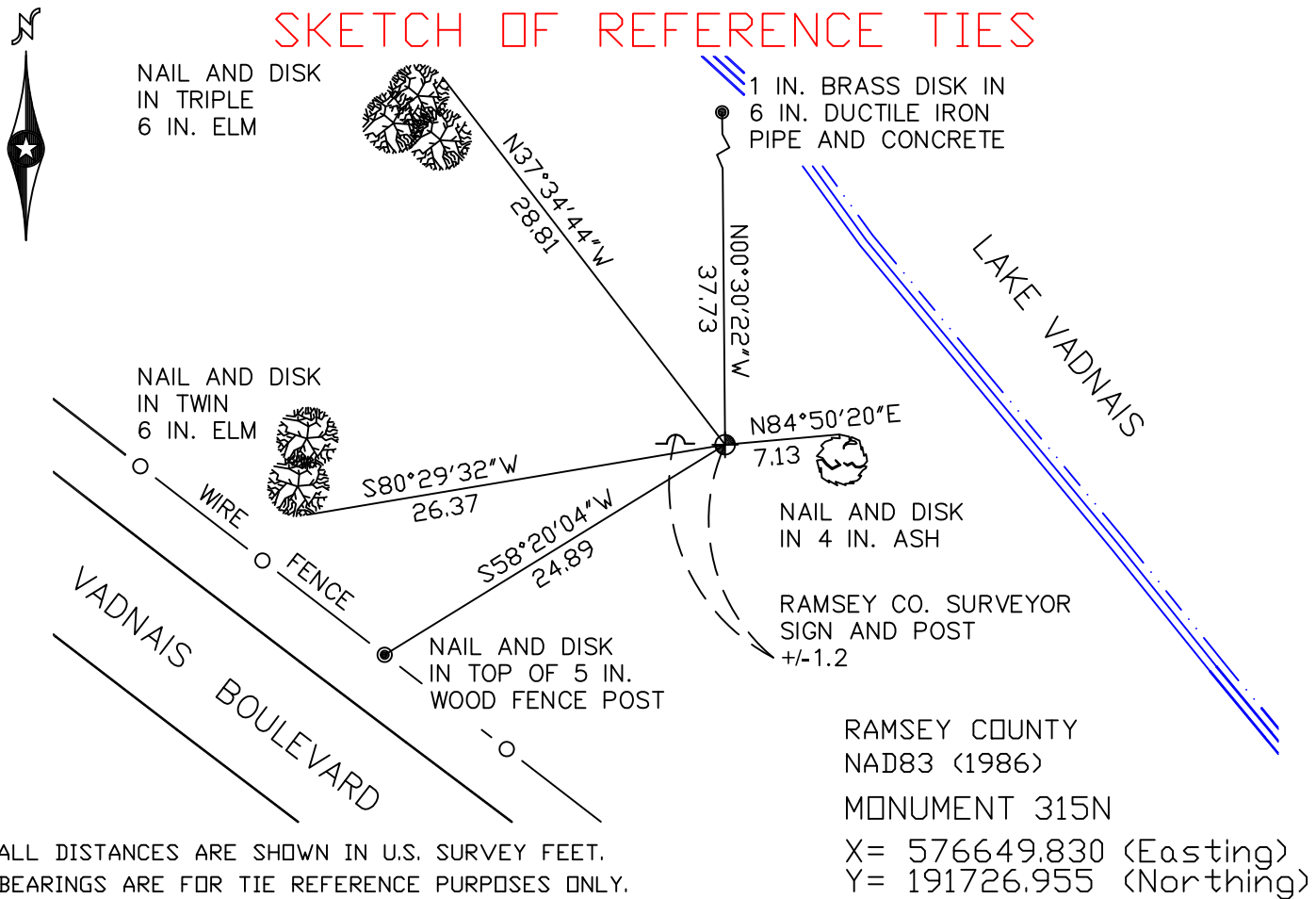
At the corner location shown on the sketch

On May 12, 2008 found a cast iron monument, flush.

left monument as found lowered monument removed monument (explain)

On _____ placed a _____

SKETCH OF REFERENCE TIES



ALL DISTANCES ARE SHOWN IN U.S. SURVEY FEET.
BEARINGS ARE FOR TIE REFERENCE PURPOSES ONLY.

Statements of evidence relative to this corner are on the following page(s).

I hereby certify that this document and the data contained herein was prepared by me or under my direct supervision this _____ day of _____, 20____.

SIGNATURE

Minnesota License No. _____

- County Surveyor
 Deputy County Surveyor Land Surveyor

OFFICE OF COUNTY SURVEYOR
County of Ramsey

I hereby certify that this document was filed in the County Surveyor's office on the _____ day of _____, 20____.

SIGNATURE

Michael D. Fiebiger, P.L.S.
Ramsey County Surveyor

MONUMENT 315N

Granite monument placed 27.15 ft. south of meander corner, +/-1900.

Tied monument, January 18, 1990.

Granite monument found at shoreline tipped south; placed a 20 in. cast iron monument 65 ft. north of bolt spike, found 5 in. below center line of Vadnais Boulevard; placed a sign and post +/- 20 in. west of monument, November 13, 1990.

Retied monument, down +/- 0.7 ft., January 7, 2003.

Retied monument, May 12, 2008.