

# MONUMENT 315

## CERTIFICATE OF LOCATION OF GOVERNMENT CORNER

Northeast Corner of Section 6, Township 29 North, Range 22 West, County of Ramsey, State of Minnesota.

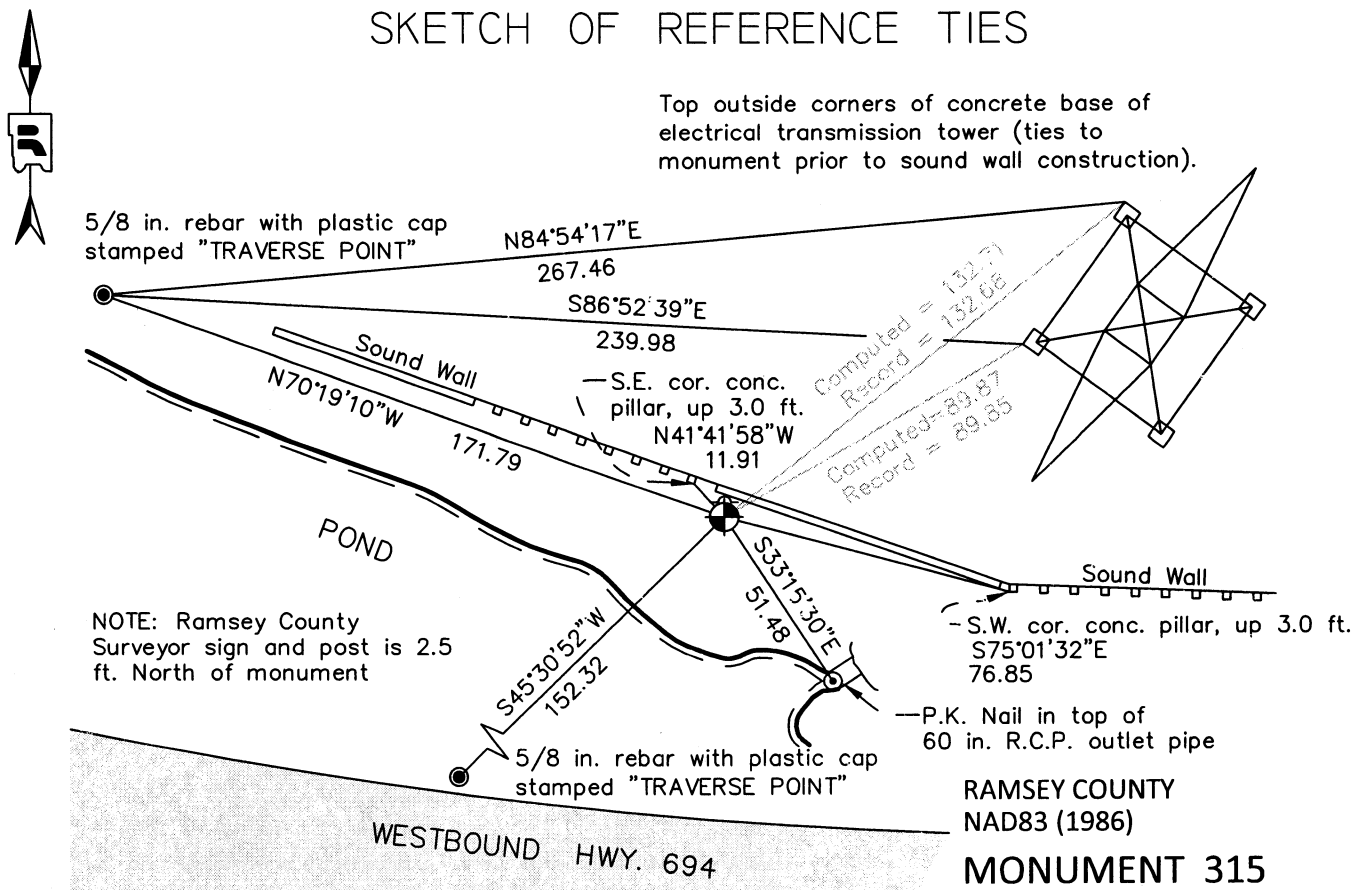
At the corner location shown on the sketch

On August 3, 2011 searched for a granite monument; determined monument to be obliterated.

left monument as found       raised/lowered monument       removed monument (explain)

On July 19, 2012 placed a a cast iron monument lettered "RAMSEY COUNTY," flush.

### SKETCH OF REFERENCE TIES



ALL DISTANCES ARE SHOWN IN U.S. SURVEY FEET.  
BEARINGS ARE FOR TIE REFERENCE PURPOSES ONLY.

X= 576652.925 (Easting)  
Y= 189403.710 (Northing)

Statements of evidence relative to this corner are on the following page.

I hereby certify that this document was prepared by me or under my direct supervision and that I am a duly Licensed Land Surveyor under the laws of the State of Minnesota.

Daniel D. Baar      10-1-12  
Daniel D. Baar      Date  
Minnesota License No. 45816

County Surveyor       Land Surveyor  
 Deputy County Surveyor

OFFICE OF COUNTY SURVEYOR  
County of Ramsey

I hereby certify that this document was filed in the County Surveyor's office this 15<sup>th</sup> day of October, 20 12.

Craig W. Hinzman  
Craig W. Hinzman, L.S.  
Ramsey County Surveyor

# MONUMENT 315

Northeast Corner of Section 6, Township 29 North, Range 22 West

Set post at corner to Sections 5, 6, 31 and 32, Wh. Oak 24 N80°E 237, Br. Oak 12 S35°W 313, October 16, 1847.

The Northeast corner of Section 6 was fixed in 1895, found old stake at Section Corner which checked the lines of old fences. Government witness trees gone. Tied it and set monument, 1896.

Found granite monument, 1975.

Found granite monument, down 0.3 ft., and  $\pm 1$  ft. West of sign and post, tied, March 5, 1993.

Granite monument shown on MINNESOTA DEPARTMENT OF TRANSPORTATION RIGHT OF WAY PLAT NO. 62-30, recorded May 27, 2004.

Monument obliterated due to MINNESOTA DEPARTMENT OF TRANSPORTATION road reconstruction on Highways 35E and 694. Dug down  $\pm 2.5$  ft and probed down  $\pm 4$  ft., found nothing, August 3, 2011.

Re-established the position of the Northeast Corner from local control (GPS) shown as rebars with "TRAVERSE POINT" caps on the sketch of reference ties and two remaining historical ties from records within the Ramsey County Surveyor's Office, also shown on the sketch of reference ties. Coordinates for the control points were established from record traverses that tie the Northeast Corner of Section 6 to the North Quarter Corner of Section 5, the South Quarter Corner of Section 6, the Center of Section 6 and the South Quarter Corner of Section 5 all in Township 29 North, Range 22 West. Set a 20 in. cast iron monument lettered "RAMSEY COUNTY," placed a Ramsey County Surveyor sign and post 2.5 ft. North of monument and tied monument, Ramsey County Surveyor's Office, July 19, 2012.