

MONUMENT 313

CERTIFICATE OF LOCATION OF GOVERNMENT CORNER

Northeast Corner of Section 1, Township 29 North, Range 23 West, County of Ramsey, State of Minnesota.

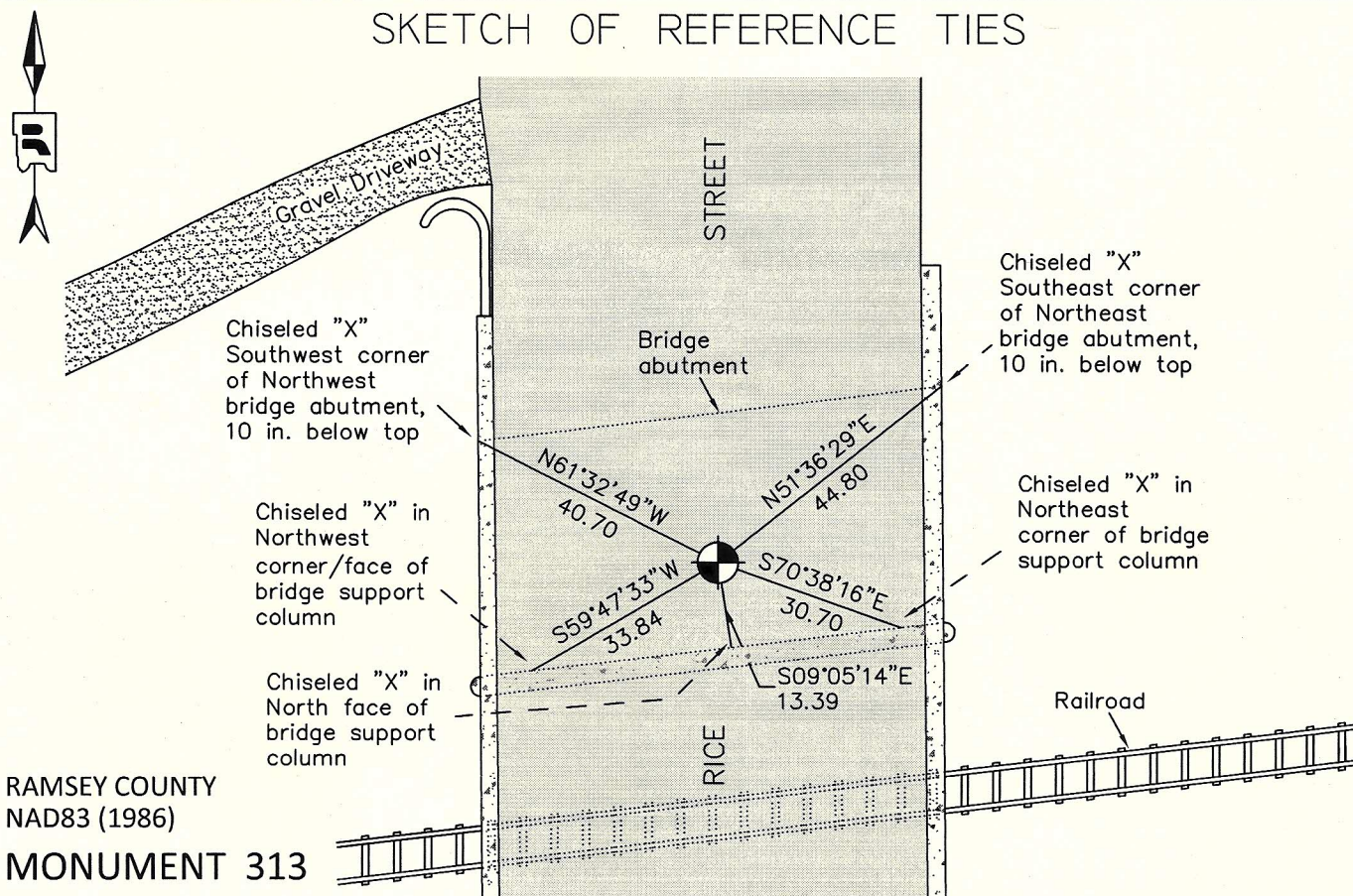
At the corner location shown on the sketch

On July 13, 2011 found a cast iron monument flush in rock with tack coat, under bridge.

left monument as found raised/lowered monument removed monument (explain)

On _____ placed a _____

SKETCH OF REFERENCE TIES



RAMSEY COUNTY
NAD83 (1986)

MONUMENT 313

X= 571644.336 (Easting)
Y= 189373.523 (Northing)

ALL DISTANCES ARE SHOWN IN U.S. SURVEY FEET.
BEARINGS ARE FOR TIE REFERENCE PURPOSES ONLY.

Statements of evidence relative to this corner are on the following page.

I hereby certify that this document was prepared by me or under my direct supervision and that I am a duly Licensed Land Surveyor under the laws of the State of Minnesota.

Daniel D. Baar 8-6-12
Daniel D. Baar Date
Minnesota License No. 45816

County Surveyor
 Deputy County Surveyor Land Surveyor

OFFICE OF COUNTY SURVEYOR
County of Ramsey

I hereby certify that this document was filed in the County Surveyor's office this 6th day of August, 20 12.

Craig W. Hinzman
Craig W. Hinzman, L.S.
Ramsey County Surveyor

MONUMENT 313

Northeast Corner of Section 1, Township 29 North, Range 23 West

Intersect North boundary and set a post for Cor. to Town. 29 and 30 N., R. 22 and 23 W., B. Oak 10 N24°E 107, B. Oak 12 N18°W 100, B. Oak 8 S42°W 45, B. Oak 11 S32°E 73, October 8 1847.

The Northeast Corner of Section 1 was fixed, set monument, June 1896.

Found railroad spike, not possibly corner, July, 1974.

Determined coordinate location of monument by locating irons in adjoining plats done by Ray Wolfgram. Bridge deck removed, Minnesota Department of Transportation, (John Sutherland) and the Ramsey County Surveyor's office dug for monument, found nothing, May 1, 1987.

Traversed under new bridge and placed 20 in. cast iron monument, that is positioned according to information on adjoining plats to the Northwest and Southwest done by Ray Wolfgram. Placed sign and post and tied monument, August 7, 1989.

Retied monument, June 21, 2006.

Retied a cast iron monument flush in rock with tack coat, under bridge, July 13, 2011.