

MONUMENT 312N

CERTIFICATE OF LOCATION OF GOVERNMENT CORNER

Witness Monument North of the South Quarter Corner of Section 36, Township 30 North, Range 23 West, County of Ramsey, State of Minnesota.

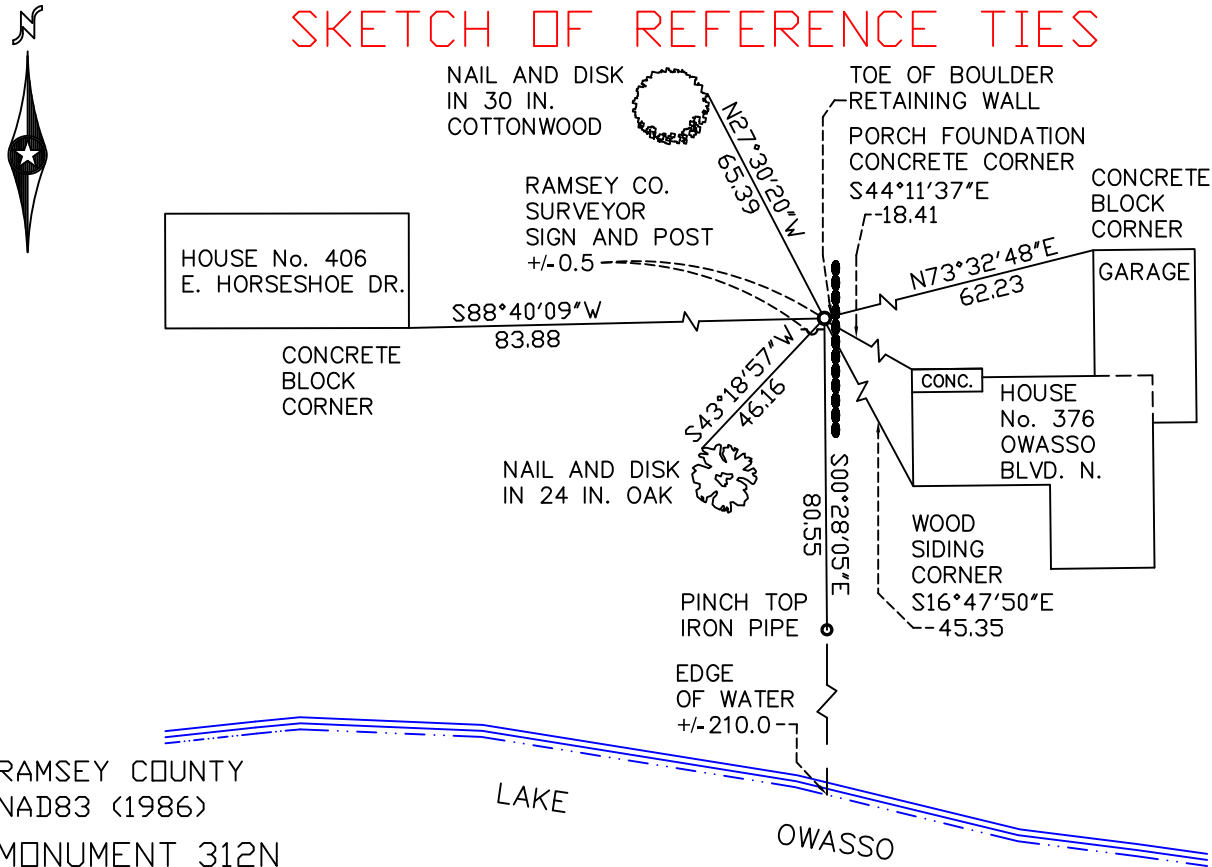
At the corner location shown on the sketch

On May 28, 2010 found a 1 inch iron pipe, down 0.35 feet.

left monument as found lowered monument removed monument (explain)

On _____ placed a _____

SKETCH OF REFERENCE TIES



RAMSEY COUNTY
NAD83 (1986)
MONUMENT 312N

X= 568996.148 (Easting)
Y= 191088.986 (Northing)

ALL DISTANCES ARE SHOWN IN U.S. SURVEY FEET.
BEARINGS ARE FOR TIE REFERENCE PURPOSES ONLY.

Statements of evidence relative to this corner are on the following page(s).

I hereby certify that this document and the data contained herein was prepared by me or under my direct supervision this _____ day of _____, 20____.

SIGNATURE

Minnesota License No. _____

- County Surveyor
 Deputy County Surveyor Land Surveyor

OFFICE OF COUNTY SURVEYOR
County of Ramsey

I hereby certify that this document was filed in the County Surveyor's office on the _____ day of _____, 20____.

SIGNATURE

Michael D. Fiebiger, P.L.S.
Ramsey County Surveyor

MONUMENT 312N

Found 1 in. iron, down +/- 3 in., adjacent to south side of fence post; placed a sign and post southwest of and tied iron monument, June 7, 1990.

Retied monument, May 28, 2010.