

MONUMENT 31

CERTIFICATE OF LOCATION OF GOVERNMENT CORNER

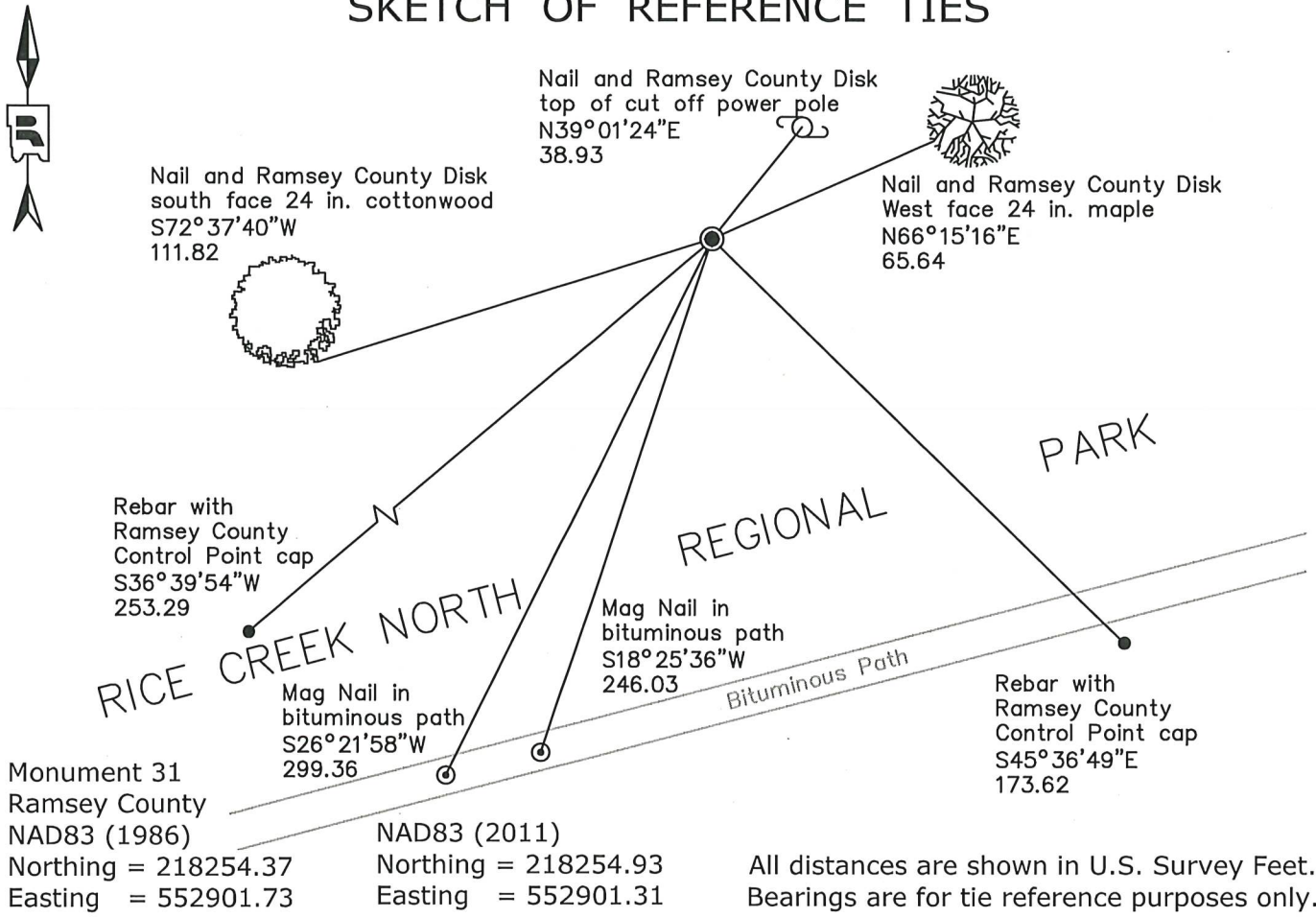
Center of Section 4, Township 30 North, Range 23 West, County of Ramsey, State of Minnesota.

At the corner location shown on the sketch

On April 29, 2019 found a cast iron monument, flush in ground.

On June 22, 2020 placed a 20 inch cast iron monument, flush in ground.

SKETCH OF REFERENCE TIES



Statements of evidence relative to this corner are on the following page.

I hereby certify that this survey, plan, or report was prepared by me or under my direct supervision, that I am a duly Licensed Land Surveyor under the laws of the state of Minnesota, and that this certificate is correct and complete to the best of my knowledge and belief.

Devin R. Ball 4/6/22
 Devin R. Ball Date
 Land Surveyor
 Minnesota License No. 56023

OFFICE OF COUNTY SURVEYOR
 County of Ramsey

I hereby certify that this document was filed in the County Surveyor's office this 7th day of April, 20 22.

Daniel D. Baar
 Daniel D. Baar
 Ramsey County Surveyor
 Minnesota License No. 45816

MONUMENT 31

Center of Section 4, Township 30, Range 23

| | |
|-------------------|--|
| May 7, 1901 | Established Center of Section by intersection, and set monument. Ramsey County Resurvey |
| August 23, 1974 | Found a granite monument, flush. Ramsey County Surveyor's Office |
| November 27, 1974 | Retied monument. Ramsey County Surveyor's Office |
| June 11, 1992 | Looked for granite monument and did not find it. Ramsey County Surveyor's Office |
| June 18, 1992 | Set a 20 inch cast iron monument using coordinates; placed a sign and post; tied out monument. Ramsey County Surveyor's Office |
| July 9, 2003 | Retied monument; sign and post +/-1 ft. South. Ramsey County Surveyor's Office |
| October 31, 2008 | Retied monument, flush. Ramsey County Surveyor's Office |
| April 21, 2013 | Checked cast iron monument, flush, and ties. Ramsey County Surveyor's Office |
| April 29, 2019 | Found a cast iron monument, flush in ground. Established offsets and checked local ties prior to removal during sewer construction. Ramsey County Surveyor's Office |
| June 22, 2020 | Placed a 20 inch cast iron monument, flush in ground following sewer construction using offsets. Recorded local ties. Ramsey County Surveyor's Office |