

# MONUMENT 309

## CERTIFICATE OF LOCATION OF GOVERNMENT CORNER

Northeast Corner of Section 3, Township 29 North, Range 23 West, County of Ramsey, State of Minnesota.

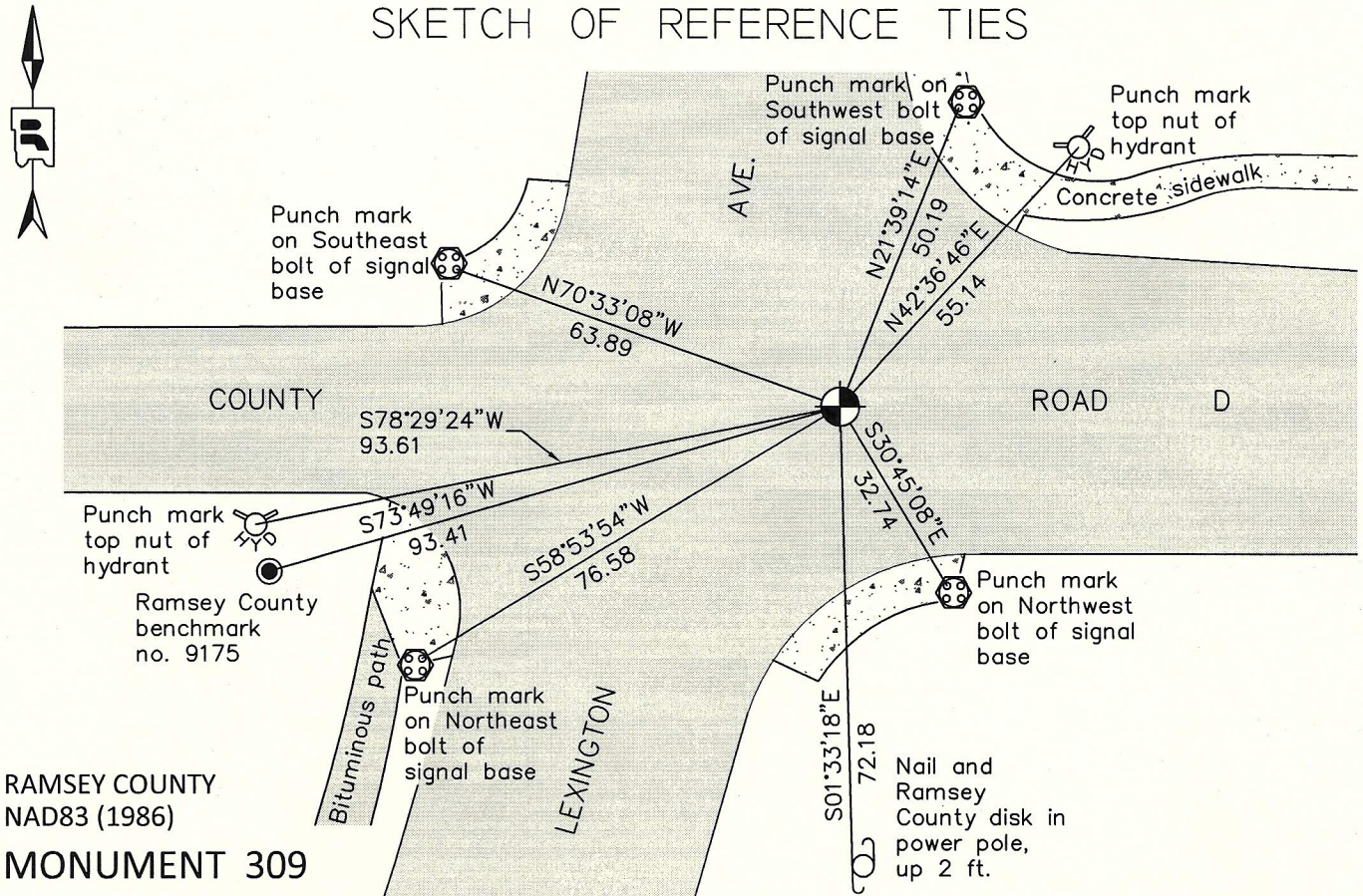
At the corner location shown on the sketch

On July 7, 2011 found a cast iron monument, within a cast iron manhole assembly.

left monument as found       raised/lowered monument       removed monument (explain)

On \_\_\_\_\_ placed a \_\_\_\_\_

### SKETCH OF REFERENCE TIES



RAMSEY COUNTY  
NAD83 (1986)  
**MONUMENT 309**

X= 561111.358 (Easting)  
Y= 189293.383 (Northing)

ALL DISTANCES ARE SHOWN IN U.S. SURVEY FEET.  
BEARINGS ARE FOR TIE REFERENCE PURPOSES ONLY.

Statements of evidence relative to this corner are on the following page.

I hereby certify that this document was prepared by me or under my direct supervision and that I am a duly Licensed Land Surveyor under the laws of the State of Minnesota.

Daniel D. Baar      8-10-12  
Daniel D. Baar      Date  
Minnesota License No. 45816

- County Surveyor       Land Surveyor  
 Deputy County Surveyor

OFFICE OF COUNTY SURVEYOR  
County of Ramsey

I hereby certify that this document was filed in the County Surveyor's office this 10th day of August, 20 12.

Craig W. Hinzman  
Craig W. Hinzman, L.S.  
Ramsey County Surveyor



# MONUMENT 309

Northeast Corner of Section 3, Township 29 North, Range 23 West

Set Post at Corner to Sections 2, 3, 34, and 35, B. Oak 15 N55°E 38; B. Oak 12 N39°W 54; B. Oak 13 S40°W 114; W. Oak 12 S5°E 94, October 16, 1847.

In establishing the Northwest Corner of Section 2 on Town line between Rose and Mounds View, found old Oak hub and also part of old Witness tree, and set Monument, May, 1896.

Found 1/2 in. iron flush, July 29, 1974.

Found a granite monument, down 2 1/2 in., set a cast iron cap and bolt monument, June 3, 1975.

Tied monument, July 28, 1975.

Construction destroyed monument; set a 20 in. cast iron monument, September, 1980.

Tied monument, January 16, 1991.

Tied out monument and set a 20 in. cast iron monument, 1.5 ft. below grade, April 17 and 28, 1998.

Set cast iron manhole assembly over monument, May 27, 1998.

Tied monument, July 31, 1998.

Retied monument, June 26, 2006.

Retied cast iron monument, within a cast iron manhole assembly, July 7, 2011.