

# MONUMENT 307

## CERTIFICATE OF LOCATION OF GOVERNMENT CORNER

Northeast Corner of Section 4, Township 29 North, Range 23 West, County of Ramsey, State of Minnesota.

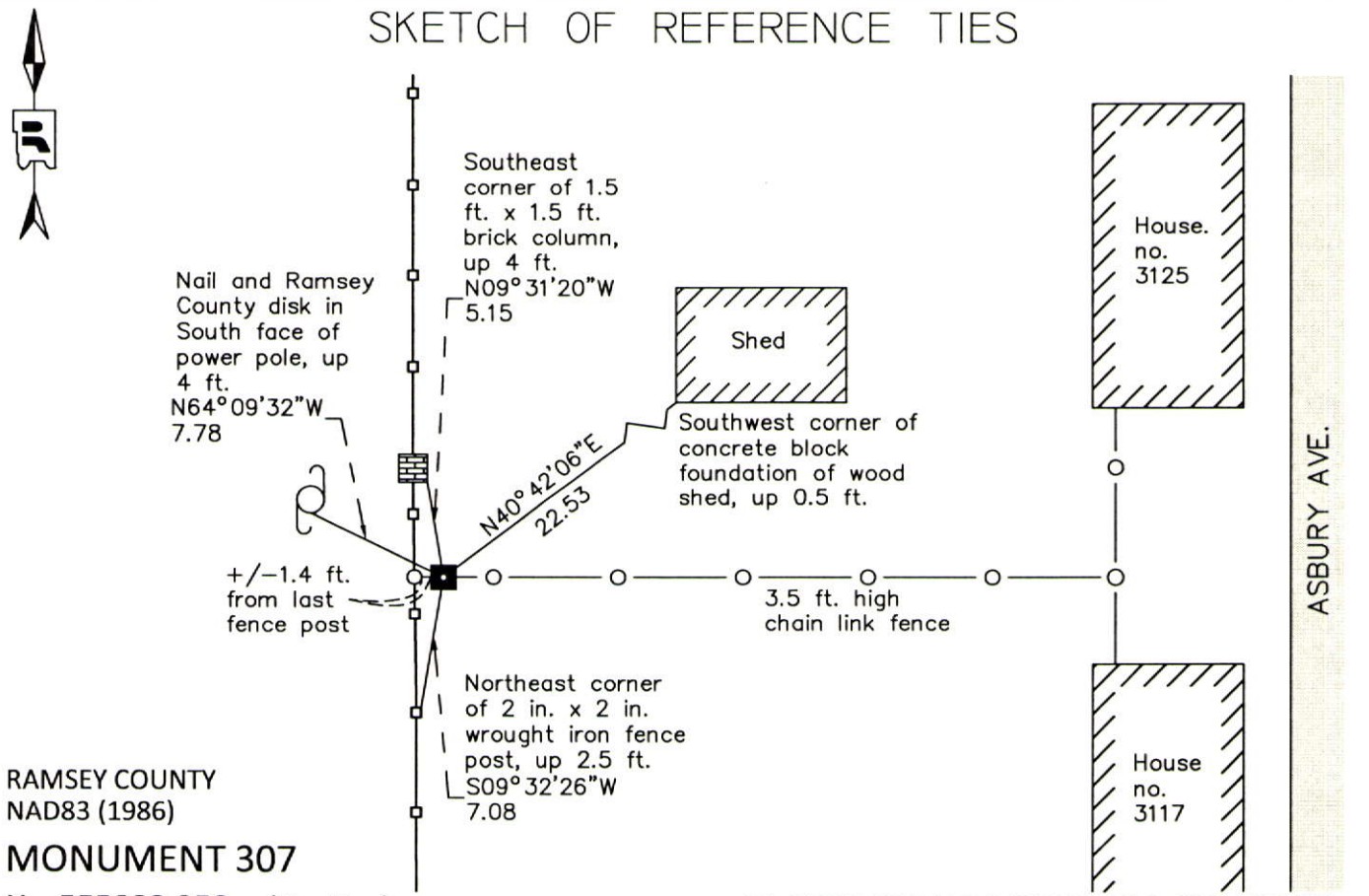
At the corner location shown on the sketch

On October 29, 2012 found an 8 in. x 8 in. granite monument with drill hole, down 0.5 ft.

left monument as found       raised/lowered monument       removed monument (explain)

On \_\_\_\_\_ placed a \_\_\_\_\_

### SKETCH OF REFERENCE TIES



RAMSEY COUNTY  
NAD83 (1986)

### MONUMENT 307

X= 555882.959 (Easting)  
Y= 189260.948 (Northing)

ALL DISTANCES ARE SHOWN IN U.S. SURVEY FEET.  
BEARINGS ARE FOR TIE REFERENCE PURPOSES ONLY.

Statements of evidence relative to this corner are on the following page.

I hereby certify that this document was prepared by me or under my direct supervision and that I am a duly Licensed Land Surveyor under the laws of the State of Minnesota.

Daniel D. Baar      12-31-14  
Daniel D. Baar      Date  
Minnesota License No. 45816

- County Surveyor       Land Surveyor  
 Deputy County Surveyor

OFFICE OF COUNTY SURVEYOR  
County of Ramsey

I hereby certify that this document was filed in the County Surveyor's office this 31<sup>st</sup> day of December, 20 14.

Craig W. Hinzman  
Craig W. Hinzman, L.S.  
Ramsey County Surveyor

# MONUMENT 307

Northeast Corner of Section 4, Township 29 North, Range 23 West

Set post at Corner to Sections 3, 4, 33, & 34, B. Oak 15 N17°E 90, B. Oak 15 N6°W 109, B. Oak 12 S60°W 91, B. Oak 20 S50°E 201, October 16, 1847.

In establishing the Northwest Corner of Section 3, found old stake, no witness trees. Set monument, May 1896.

Checked monument, March, 1933.

Found a granite monument flush and tied, July 29, 1974.

Monument down +/-0.2 ft., January 16, 1990.

Found monument down 0.4 ft., ties checked, October 25, 2005.

Found a granite monument with a drill hole down 0.5 ft.; tied, October 29, 2012.