

MONUMENT 306

CERTIFICATE OF LOCATION OF GOVERNMENT CORNER

North Quarter Corner of Section 4, Township 29 North, Range 23 West, County of Ramsey, State of Minnesota.

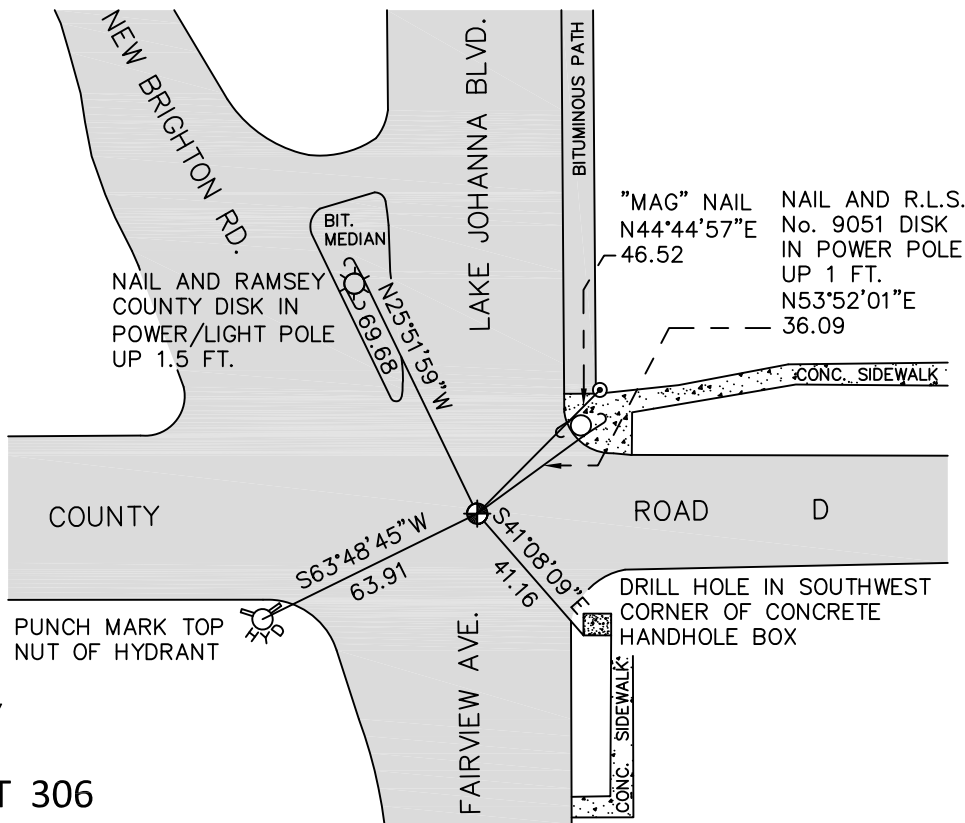
At the corner location shown on the sketch

On July 5, 2011 found a broken cast iron monument.

left monument as found raised/lowered monument removed monument (explain)

On July 26, 2011 placed a a cast iron monument, within a cast iron manhole assembly.

SKETCH OF REFERENCE TIES



RAMSEY COUNTY
NAD83 (1986)

MONUMENT 306

X= 553215.394 (Easting)
Y= 189261.778 (Northing)

ALL DISTANCES ARE SHOWN IN U.S. SURVEY FEET.
BEARINGS ARE FOR TIE REFERENCE PURPOSES ONLY.

Statements of evidence relative to this corner are on the following page.

I hereby certify that this document was prepared by me or under my direct supervision and that I am a duly Licensed Land Surveyor under the laws of the State of Minnesota.

Daniel D. Baar Date
Minnesota License No. 45816

County Surveyor
 Deputy County Surveyor Land Surveyor

OFFICE OF COUNTY SURVEYOR
County of Ramsey

I hereby certify that this document was filed in the County Surveyor's office this _____ day of _____, 20 ____.

Craig W. Hinzman, L.S.
Ramsey County Surveyor

MONUMENT 306

This corner was fixed in May, 1896. Government witness trees gone, set monument.

Cast iron monument, January, 1966.

Found a cast iron monument flush and tied, September 24, 1974.

Retied monument, August 14, 1990.

Retied monument, July 16, 2002.

Retied monument, August 2, 2007.

Top of monument broken off, checked ties to center of shaft, set P.K. nail offsets. Removed broken cast iron. Found 6 in. spike down +/-2 ft.; spike was 0.7 ft. south-southwest of top broken cast iron. Dug down +/-4 ft., found nothing, July 25, 2011.

Set a 20 in. cast iron monument within a cast iron manhole assembly at position of center of broken cast iron monument shaft; tied, July 26, 2011.