

MONUMENT 303

CERTIFICATE OF LOCATION OF FOUND MONUMENT

Northwest Corner of Section 5, Township 29 North, Range 23 West, County of Ramsey, State of Minnesota.

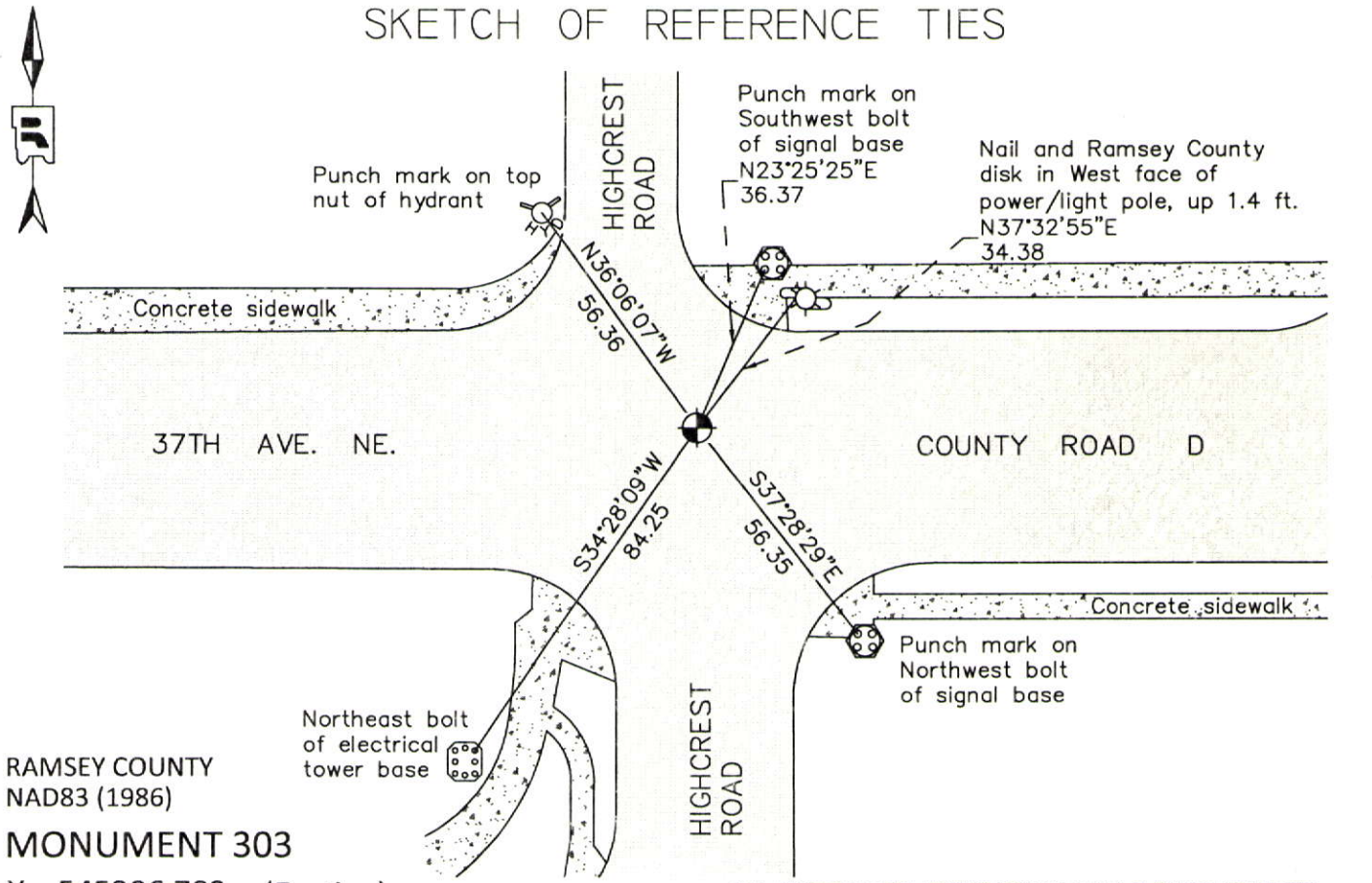
At the corner location shown on the sketch

On July 31, 2012 found a "Ramsey County" cast iron monument within a cast iron manhole assembly.

left monument as found raised/lowered monument removed monument (explain)

On _____ placed a _____

SKETCH OF REFERENCE TIES



RAMSEY COUNTY
NAD83 (1986)
MONUMENT 303

X= 545306.782 (Easting)
Y= 189247.374 (Northing)

ALL DISTANCES ARE SHOWN IN U.S. SURVEY FEET.
BEARINGS ARE FOR TIE REFERENCE PURPOSES ONLY.

Statements of evidence relative to this corner are on the following page.

I hereby certify that this document was prepared by me or under my direct supervision and that I am a duly Licensed Land Surveyor under the laws of the State of Minnesota.

Daniel D. Baar 12-30-14
Date

Minnesota License No. 45816

- County Surveyor Land Surveyor
 Deputy County Surveyor

OFFICE OF COUNTY SURVEYOR
County of Ramsey

I hereby certify that this document was filed in the County Surveyor's office this 30th day of December, 20 14.

Craig W. Hinzman
Craig W. Hinzman, L.S.
Ramsey County Surveyor

MONUMENT 303

Northwest Corner of Section 5, Township 29 North, Range 23 West

Set post at Corner to Sections 5, 6, 31, & 32, B. Oak 18 N86°E 342, B. Oak 22 S84°E 253, W. Oak 14 S82°W 116, October 17, 1847.

Found monument at Southeast Corner of Section 31, set by Hennepin County, June 9, 1897.

Checked monument, December, 1946.

Checked monument, March, 1968.

Found a cast iron monument flush, May 20, 1976.

Checked monument, May 9, 1977.

Monument removed for construction of County Road D, 1984.

Replaced with a 20 in. cast iron monument, 1985.

Tied out monument, May 16, 1990.

Retied monument, November 13, 2002.

Reset 20 in. cast iron monument, down 1 ft. and placed a cast iron manhole assembly over monument, July 25, 2005.

Tied out monument, July 9, 2007.

Found cast iron monument 0.8' down in casting in good condition. All ties exist, did not remeasure, May 5, 2011. (Hennepin County Surveyor)

Checked "Ramsey County" cast iron monument in cast iron manhole assembly and ties, July 31, 2012.