

MONUMENT 299

CERTIFICATE OF LOCATION OF SECTION SUBDIVISION MONUMENT

Center of Section 36, Township 30 North, Range 22 West, County of Ramsey, State of Minnesota.

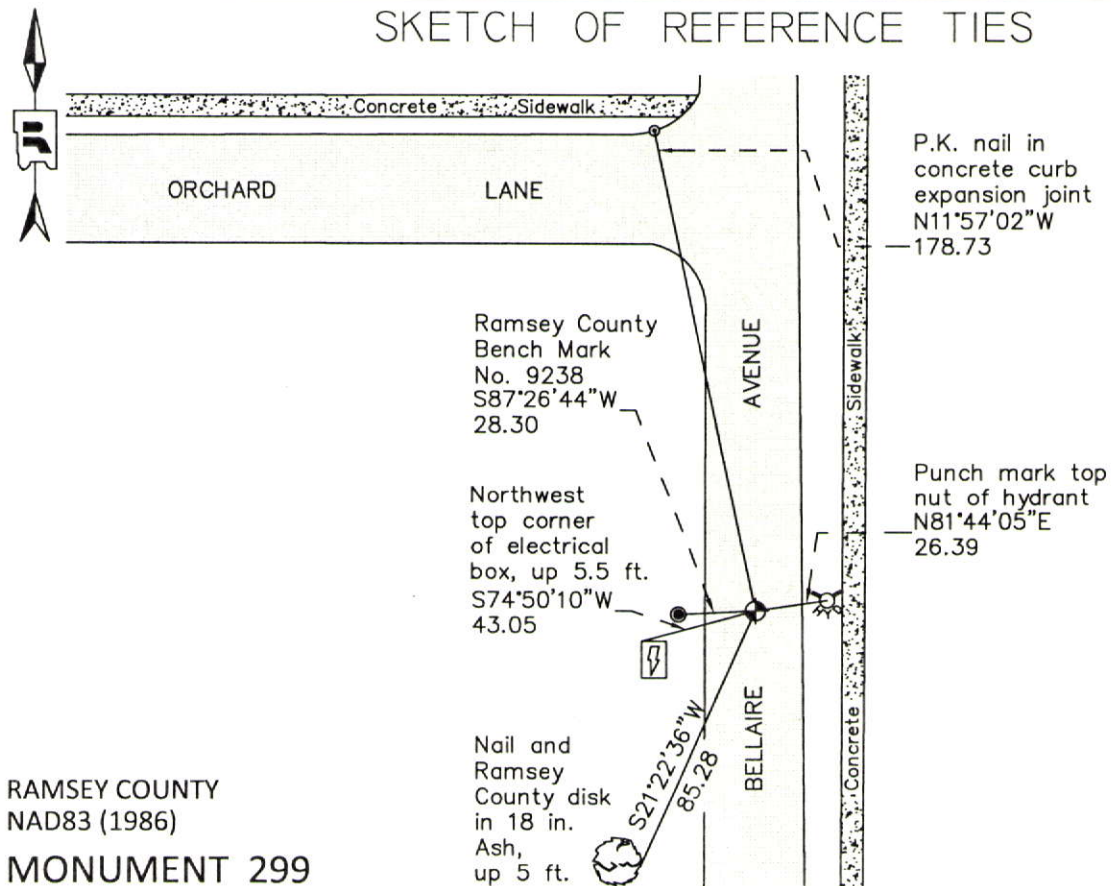
At the corner location shown on the sketch

On July 27, 2012 found a "Ramsey County" cast iron monument within a cast iron manhole assembly.

left monument as found raised/lowered monument removed monument (explain)

On _____ placed a _____

SKETCH OF REFERENCE TIES



RAMSEY COUNTY
NAD83 (1986)
MONUMENT 299

X= 600394.278 (Easting)
Y= 192084.594 (Northing)

ALL DISTANCES ARE SHOWN IN U.S. SURVEY FEET.
BEARINGS ARE FOR TIE REFERENCE PURPOSES ONLY.

Statements of evidence relative to this corner are on the following page.

I hereby certify that this document was prepared by me or under my direct supervision and that I am a duly Licensed Land Surveyor under the laws of the State of Minnesota.

Daniel D. Baar 12-30-14
Daniel D. Baar Date

Minnesota License No. 45816

County Surveyor Land Surveyor
 Deputy County Surveyor

OFFICE OF COUNTY SURVEYOR
County of Ramsey

I hereby certify that this document was filed in the County Surveyor's office this 30th day of December, 20 14.

Craig W. Hinzman
Craig W. Hinzman, L.S.
Ramsey County Surveyor

MONUMENT 299

Center of Section 36, Township 30 North, Range 22 West

Fixed the Center of Section 36 by intersection and set monument,
November 19, 1900.

Found 1/2 in. pipe over a granite monument. Granite monument down 0.45 ft.,
May 28, 1974.

Placed a short (4-1/2 in.) cast iron monument on top of granite monument,
November 7, 1974.

Re-cemented cast iron monument, May 20, 1975.

Tied monument, June 15, 1990.

Removed monument for Maintenance Department, May 3, 1994.

Relocated position with P.K. nails, May 9, 1996.

Placed a 20 in. cast iron monument, 1996.

Tied monument, September 30, 1999.

Retied monument, August 30, 2006.

Retied cast iron monument, flush, August 15, 2011.

Tied monument for removal during road reconstruction, July 17, 2012.

Lowered existing "Ramsey County" 20 in. cast iron monument and placed a cast iron manhole assembly over top, during road milling and overlay project by the City of White Bear Lake; tied, July 27, 2012.