

# MONUMENT 297

## CERTIFICATE OF LOCATION OF FOUND MONUMENT

Center of Section 35, Township 30 North, Range 22 West, County of Ramsey, State of Minnesota.

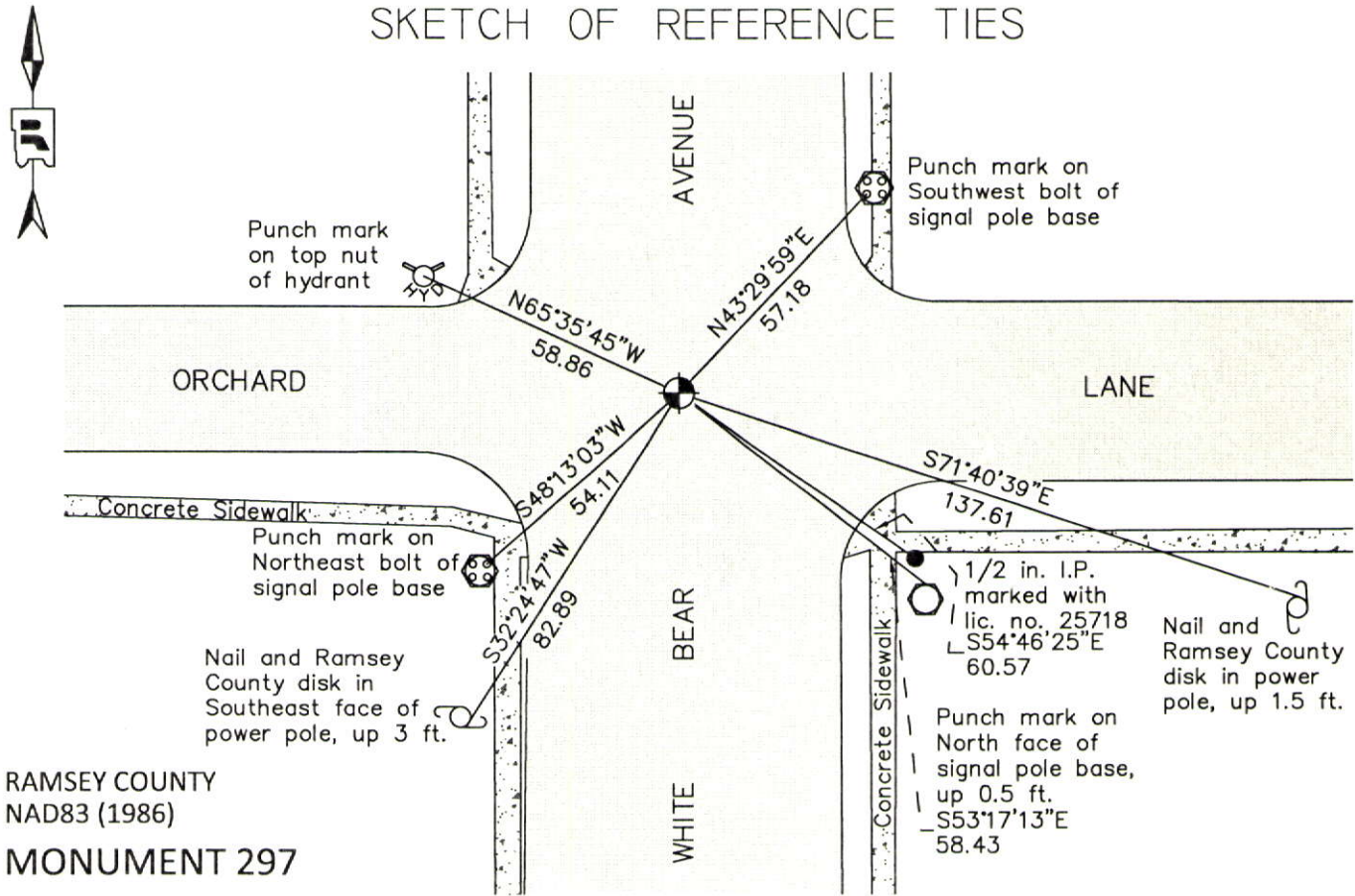
At the corner location shown on the sketch

On April 17, 2012 found a cast iron monument, within a cast iron manhole assembly.

left monument as found       raised/lowered monument       removed monument (explain)

On \_\_\_\_\_ placed a \_\_\_\_\_

### SKETCH OF REFERENCE TIES



RAMSEY COUNTY  
NAD83 (1986)  
**MONUMENT 297**

X= 595121.964 (Easting)  
Y= 192062.183 (Northing)

ALL DISTANCES ARE SHOWN IN U.S. SURVEY FEET.  
BEARINGS ARE FOR TIE REFERENCE PURPOSES ONLY.

Statements of evidence relative to this corner are on the following page.

I hereby certify that this document was prepared by me or under my direct supervision and that I am a duly Licensed Land Surveyor under the laws of the State of Minnesota.

Daniel D. Baar      12-15-14  
Daniel D. Baar      Date  
Minnesota License No. 45816

County Surveyor       Land Surveyor  
 Deputy County Surveyor

OFFICE OF COUNTY SURVEYOR  
County of Ramsey

I hereby certify that this document was filed in the County Surveyor's office this 15th day of December, 20 14.

Craig W. Hinzman  
Craig W. Hinzman, L.S.  
Ramsey County Surveyor

## MONUMENT 297

Center of Section 35, Township 30 North, Range 22 West

Fixed the Center of Section 35, tied it and set monument, September, 1896.

Plat of ELMWOOD GARDEN FARMS NO. 3 shows a stone monument at Center of Section, May 13, 1924.

Checked monument, October, 1939.

Checked monument, July, 1967.

Found cast iron monument, 1974.

Tied out cast iron monument, June 26, 1991.

Retied monument, November 13, 1998.

Retied monument, October 28, 2005.

Retied monument, July 21, 2010.

Tied monument for removal during road reconstruction, April 4, 2012.

Cast iron monument removed; found 5/8 in. by 12 in. long rebar down +/-1 ft. below road surface. Rebar was 0.31 ft. South of the cast iron monument. Dug down +/-32 in., found nothing more. Set a 20 in. cast iron monument, using construction ties, in same location as the cast iron monument that was removed. Manhole assembly set by others. Tied monument, April 17, 2012.