

MONUMENT 290N

CERTIFICATE OF LOCATION OF GOVERNMENT CORNER

Witness Corner to Meander Corner No. 30 of Section 31, Township 30 North,
Range 22 West, County of Ramsey, State of Minnesota.

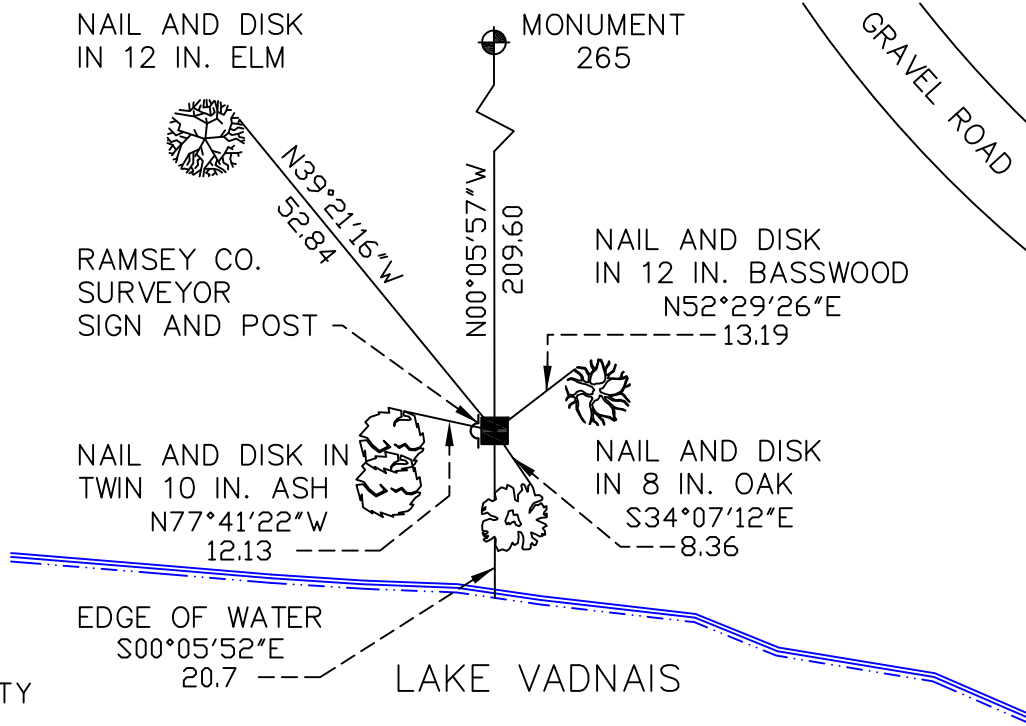
At the corner location shown on the sketch

On May 12, 2008 found a granite monument, down 1.1 feet.

left monument as found lowered monument removed monument (explain)

On _____ placed a _____

SKETCH OF REFERENCE TIES



RAMSEY COUNTY
NAD83 (1986)

MONUMENT 290N

X= 576646.745 (Easting)
Y= 194467.915 (Northing)

ALL DISTANCES ARE SHOWN IN U.S. SURVEY FEET.
BEARINGS ARE FOR TIE REFERENCE PURPOSES ONLY.

Statements of evidence relative to this corner are on the following page(s).

I hereby certify that this document and the data contained herein was prepared by me or under my direct supervision this _____ day of _____, 20____.

SIGNATURE

Minnesota License No. _____

- County Surveyor
 Deputy County Surveyor Land Surveyor

OFFICE OF COUNTY SURVEYOR

County of Ramsey

I hereby certify that this document was filed in the County Surveyor's office on the ____ day of _____, 20____.

David D. Claypool, P.L.S., County Surveyor

By _____, Deputy

MONUMENT 290N

Meander corner moved 15 feet north, placed granite monument, April, 1900.

Granite monument moved an additional 15 feet north, April 24, 1934.

Found a granite monument, down +/-1.1 ft., September 17, 1990.

Placed a sign and post on west side of granite monument, tied out, October 19, 1990.

Retied monument, January 7, 2003.

Retied monument, May 12, 2008.