

MONUMENT 288

CERTIFICATE OF LOCATION OF GOVERNMENT CORNER

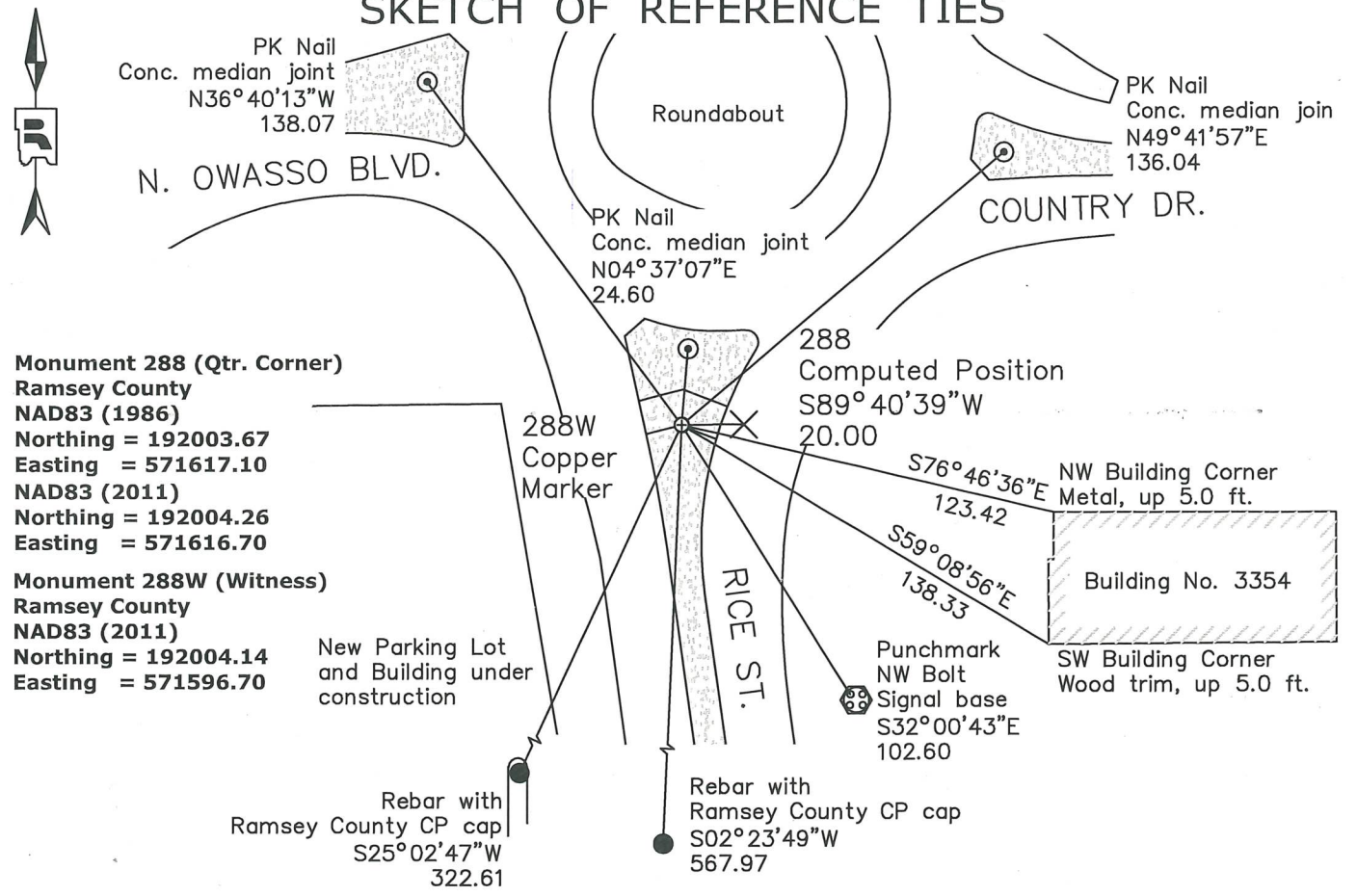
East Quarter Corner of Section 36, Township 30 North, Range 23 West, County of Ramsey, State of Minnesota.

At the corner location shown on the sketch

On September 23, 2019 found a 4 3/8 inch short cast iron monument over a granite monument at the corner position (288).

On April 29, 2021 placed a 1 inch copper marker in concrete walk at the witness position (288W).

SKETCH OF REFERENCE TIES



Monument 288 (Qtr. Corner)
 Ramsey County
 NAD83 (1986)
 Northing = 192003.67
 Easting = 571617.10
 NAD83 (2011)
 Northing = 192004.26
 Easting = 571616.70

Monument 288W (Witness)
 Ramsey County
 NAD83 (2011)
 Northing = 192004.14
 Easting = 571596.70

New Parking Lot and Building under construction

Rebar with Ramsey County CP cap
 S25° 02' 47" W
 322.61

Rebar with Ramsey County CP cap
 S02° 23' 49" W
 567.97

All distances are shown in U.S. Survey Feet. Bearings are for tie reference purposes only.

Statements of evidence relative to this corner are on the following page.

I hereby certify that this survey, plan, or report was prepared by me or under my direct supervision, that I am a duly Licensed Land Surveyor under the laws of the state of Minnesota, and that this certificate is correct and complete to the best of my knowledge and belief.

Stephane J. Robert 3-27-2024

 Stephane J. Robert Date
 Deputy County Surveyor
 Minnesota License No. 42642

OFFICE OF COUNTY SURVEYOR
 County of Ramsey
 I hereby certify that this document was filed in the County Surveyor's office this 27th day of March, 2024.

Daniel D. Baar

 Daniel D. Baar
 Ramsey County Surveyor
 Minnesota License No. 45816

MONUMENT 288

East Quarter Corner of Section 36, Township 30, Range 23

- October 18, 1847 Between Ranges 22 and 23. North between Sections 31 and 36. At 40.00 chains, set post at Section Corner.
Bur Oak 6 S.86W. 88
Bur Oak 12 N.11E. 75
James M. Marsh, Deputy Surveyor
- *August 1896 In establishing the $\frac{1}{4}$ corner between Section 31 T30 R22 and Section 36 T30 R23 ran a straight line north and south. Prorated and fixed $\frac{1}{4}$ section corner. No Gov't trees. Set monument.
Ramsey County Resurvey
- *August 9, 1897 The $\frac{1}{4}$ corner between Section 36 Twn 30 Range 23 and Section 31 T30 R22. Set monument.
Ramsey County Resurvey
- *Note: The Ramsey County Resurvey shows two separate notes indicating two differing dates for when the monument was set.
- December 1943 Checked monument.
Ramsey County Engineer's Office
- November 12, 1968 Found a RR spike above a 6 inch by 6 inch granite monument and recorded ties.
Minnesota Highway Department
- December 14, 1979 Found R.R. spike at surface; found granite monument down $4\frac{1}{2}$ inches; placed short cast iron monument.
Ramsey County Surveyor's Office
- June 6, 1990 Cast iron monument down 0.3 feet; tied.
Ramsey County Surveyor's Office
- December 4, 2002 Retied monument.
Ramsey County Surveyor's Office
- June 17, 2009 Retied cast iron monument, down 0.25 feet.
Ramsey County Surveyor's Office
- July 3, 2014 Found a cast iron monument, down 0.25 feet and inspected local ties.
Ramsey County Surveyor's Office
- August 27, 2018 Found a cast iron monument, down 0.25 feet and inspected local ties.
Ramsey County Surveyor's Office
- March 29, 2019 Found a cast iron monument, down 0.25 feet in bituminous road. Established offsets and checked local ties prior to removal during road construction.
Ramsey County Surveyor's Office
- September 23, 2019 Short cast iron monument removed. Found a granite monument with drill hole, down 0.5 feet. Established offsets and checked local ties prior to removal during road construction.
Ramsey County Surveyor's Office

MONUMENT 288

East Quarter Corner of Section 36, Township 30, Range 23

April 16, 2021

Established a witness position (288W) on the East-West $\frac{1}{4}$ line and 20.00 feet west of the $\frac{1}{4}$ corner position, as perpetuated by short cast iron monument over granite monument.
Ramsey County Surveyor's Office

April 29, 2021

Placed a 1 inch copper marker stamped "Ramsey County" in concrete walk at the witness position (288W) using offsets. Recorded local ties.
Ramsey County Surveyor's Office