

# MONUMENT 285

## CERTIFICATE OF LOCATION OF SECTION SUBDIVISION MONUMENT

Center of Section 35, Township 30 North, Range 23 West, County of Ramsey, State of Minnesota.

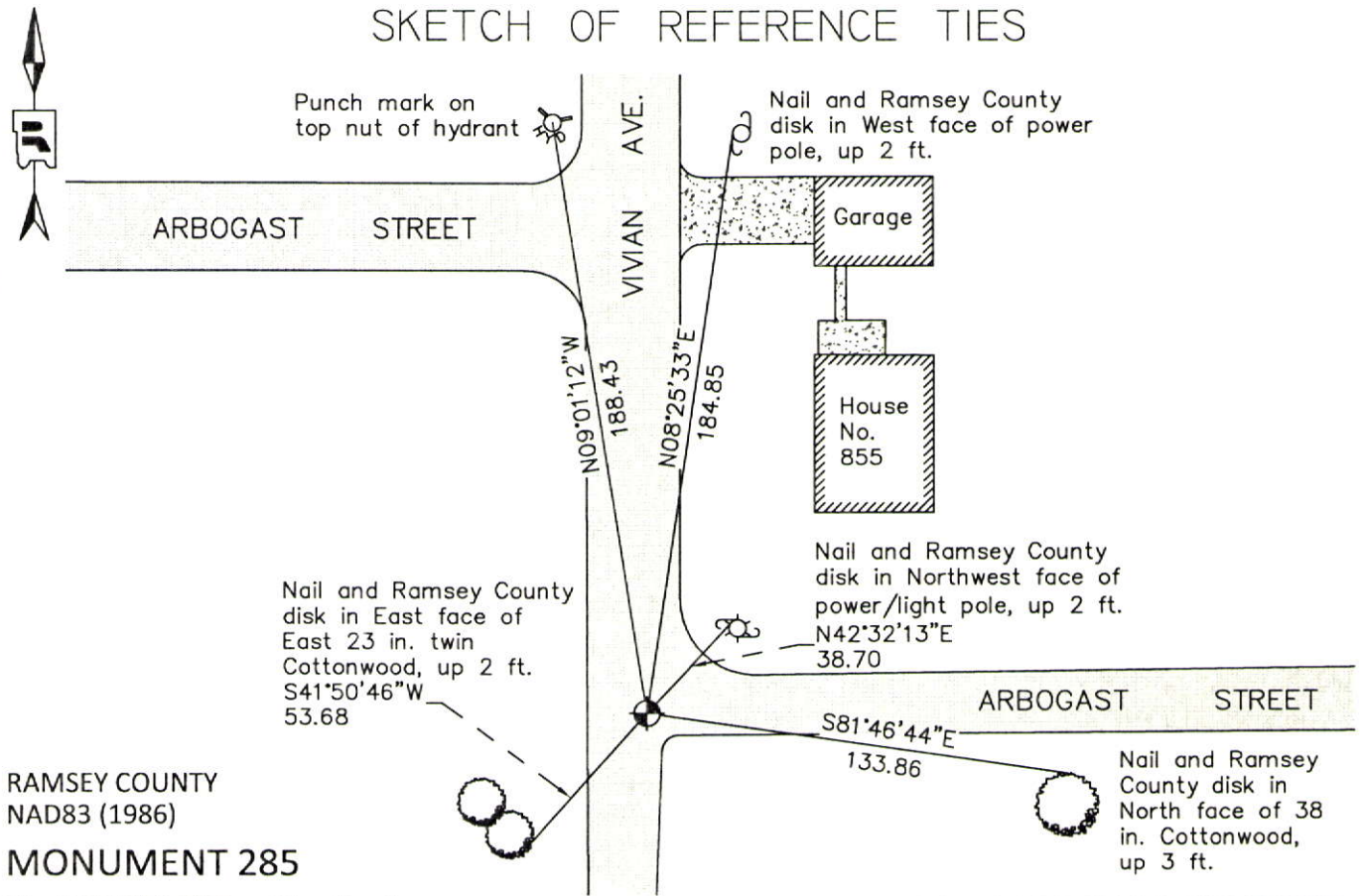
At the corner location shown on the sketch

On June 29, 2012 found a "Ramsey County" cast iron monument, within a cast iron manhole assembly.

left monument as found       raised/lowered monument       removed monument (explain)

On \_\_\_\_\_ placed a \_\_\_\_\_

### SKETCH OF REFERENCE TIES



RAMSEY COUNTY  
NAD83 (1986)  
**MONUMENT 285**

X= 563724.287 (Easting)  
Y= 191952.264 (Northing)

ALL DISTANCES ARE SHOWN IN U.S. SURVEY FEET.  
BEARINGS ARE FOR TIE REFERENCE PURPOSES ONLY.

Statements of evidence relative to this corner are on the following page.

I hereby certify that this document was prepared by me or under my direct supervision and that I am a duly Licensed Land Surveyor under the laws of the State of Minnesota.

*Daniel D. Baar*

12-15-14

Daniel D. Baar  
Minnesota License No. 45816

County Surveyor  
 Deputy County Surveyor       Land Surveyor

OFFICE OF COUNTY SURVEYOR  
County of Ramsey

I hereby certify that this document was filed in the County Surveyor's office this 15<sup>th</sup> day of December, 20 14.

*Craig W. Hinzman*

Craig W. Hinzman, L.S.  
Ramsey County Surveyor

# MONUMENT 285

Center of Section 35, Township 30 North, Range 23 West

Fixed the Center of Section 35 by intersection and set monument,  
November 24, 1900.

Checked granite monument, December, 1943.

Replaced granite monument with a cast iron monument, May, 1964.

Found a cast iron monument flush and tied, August 9, 1974.

Retied monument, February 12, 1991.

Retied monument, December 4, 2002.

Retied monument, August 24, 2007.

Monument missing due to recent reconstruction; used local ties and P.K. nail at  
centerline of Vivian Ave., set P.K. nail at monument position, June 4, 2012.

Installed a 20 in. cast iron monument within a cast iron manhole assembly, in place  
of P.K. nail; tied, June 29, 2012.