

MONUMENT 284

CERTIFICATE OF LOCATION OF GOVERNMENT CORNER

West Quarter Corner of Section 35, Township 30 North, Range 23 West, County of Ramsey, State of Minnesota.

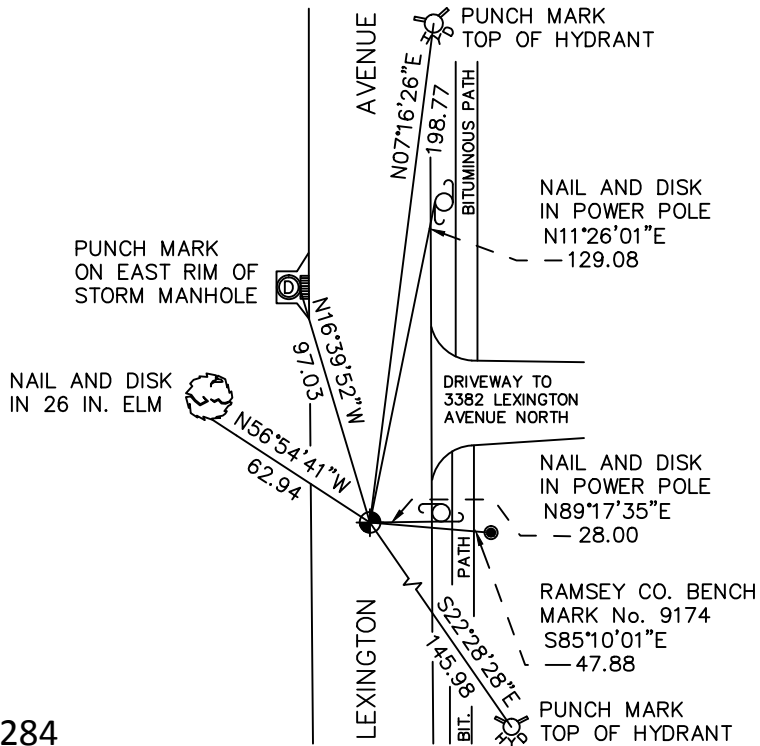
At the corner location shown on the sketch

On July 27, 2010 found a cast iron monument, within a cast iron manhole assembly.

left monument as found raised/lowered monument removed monument (explain)

On _____ placed a _____

SKETCH OF REFERENCE TIES



RAMSEY COUNTY
NAD83 (1986)

MONUMENT 284

X= 561089.343 (Easting)
Y= 191928.638 (Northing)

ALL DISTANCES ARE SHOWN IN U.S. SURVEY FEET.
BEARINGS ARE FOR TIE REFERENCE PURPOSES ONLY.

Statements of evidence relative to this corner are on the following page.

I hereby certify that this document has been prepared by me or under my direct supervision this _____ day of _____, 20____.

SIGNATURE

Minnesota License No. _____

- County Surveyor
 Deputy County Surveyor Land Surveyor

OFFICE OF COUNTY SURVEYOR
County of Ramsey

I hereby certify that this document was filed in the County Surveyor's office this _____ day of _____, 20____.

SIGNATURE
Michael D. Fiebiger, P.L.S.
Ramsey County Surveyor

MONUMENT 284

Found a granite monument down 4 3/4 in.; set a short cast iron monument, July 15, 1975.

Road construction destroyed monument; set a 20 in. cast iron monument, September, 1980.

Tied monument, June, 1990.

Tied out monument and set a 20 in. cast iron monument 1.5 ft. below finished grade, April 17 and 28, 1998.

Set a cast iron manhole assembly over monument, May 27, 1998.

Tied monument, October 25, 2005.

Retied monument, July 27, 2010.