

MONUMENT 28

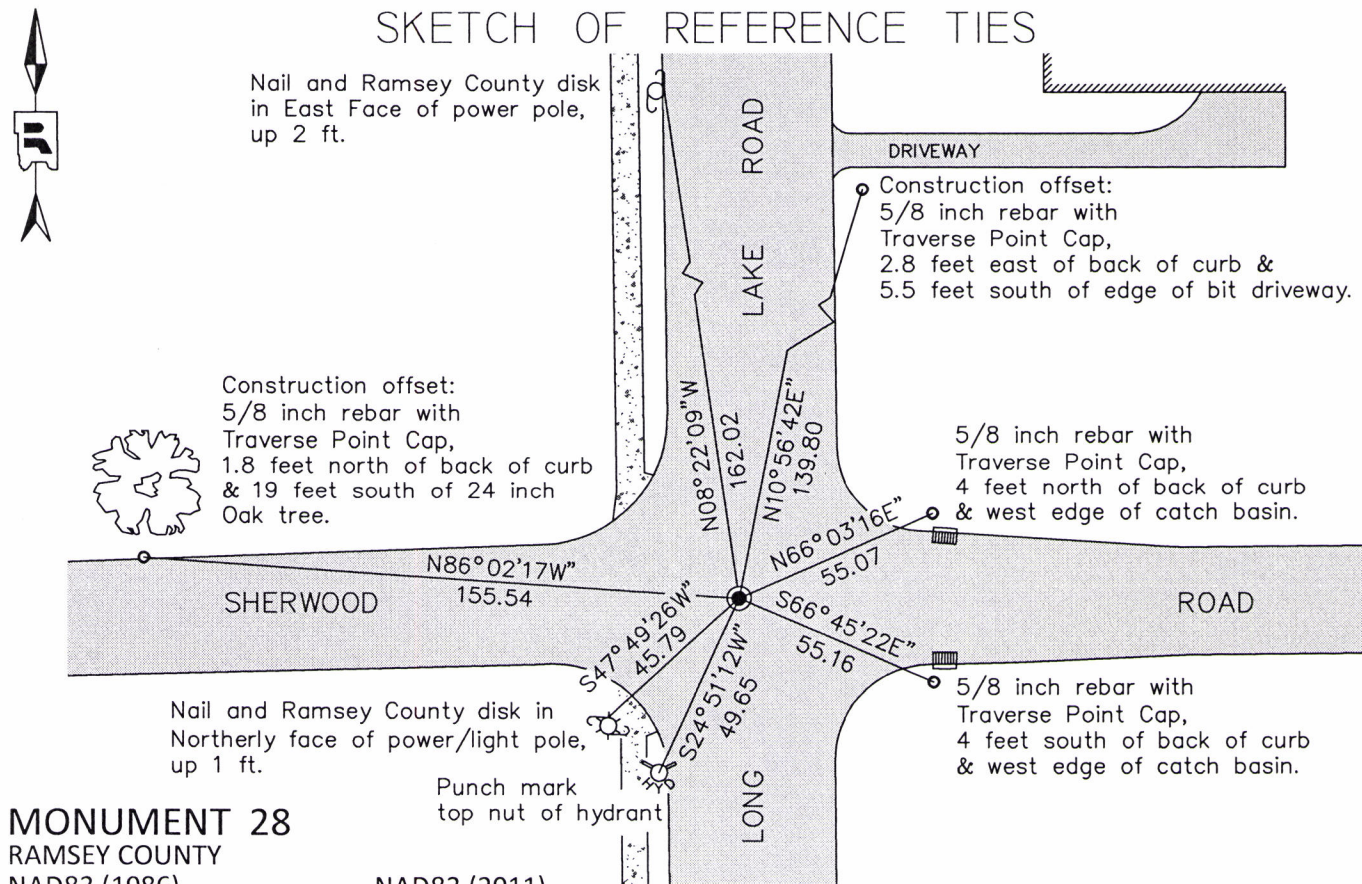
CERTIFICATE OF LOCATION OF FOUND MONUMENT

East Quarter Corner of Section 6, Township 30 North, Range 23 West, County of Ramsey, State of Minnesota.

At the corner location shown on the sketch

- On June 4, 2018 found a cast iron monument at grade in bituminous road, encased in concrete.
- left monument as found
 raised/lowered monument
 removed monument (explain)
- On June 29, 2018 placed a 5/8 inch x 14 inch rebar with 3 inch Aluminum Cap
- stamped "Ramsey County Surveyor" flush in new bituminous roadway.

SKETCH OF REFERENCE TIES



MONUMENT 28

RAMSEY COUNTY

NAD83 (1986)

Northing = 218257.589

Easting = 544983.780

NAD83 (2011)

Northing = 218258.416

Easting = 544983.324

ALL DISTANCES ARE SHOWN IN U.S. SURVEY FEET.

BEARINGS ARE FOR TIE REFERENCE PURPOSES ONLY.

Statements of evidence relative to this corner are on the following page.

I hereby certify that this survey, plan, or report was prepared by me or under my direct supervision, that I am a duly Licensed Land Surveyor under the laws of the State of Minnesota, and that this certificate is correct and complete to the best of my knowledge and belief.

Daniel D. Baar

Daniel D. Baar
County Surveyor

Minnesota License No. 45816

7-19-19

Date

OFFICE OF COUNTY SURVEYOR
County of Ramsey

I hereby certify that this document was filed in the County Surveyor's office this 19th day of July, 20 19.

Daniel D. Baar

Daniel D. Baar, L.S.
Ramsey County Surveyor

MONUMENT 28

East Quarter Corner of Section 6, Township 30 North, Range 23 West

December 14, 1847	Set 1/4 Section post, Bur Oak 12 S88°W 76; Do (Bur Oak) 7 East 84; December 14, 1847. Isaac N Higbee, Deputy Surveyor.
January 20, 1903	In establishing the 1/4 Corner between Sections 5 and 6, prorated N. and S. and fixed 1/4 Corner, no Government ties, and set monument. Ramsey County Remonumentation Survey
July 13, 1940	Granite Monument shown at this location on WOODLAWN TERRACE plat.
October 13, 1941	Granite Monument shown at this location on LAPORT MEADOWS plat.
November 1943	Checked Monument. Ramsey County Engineering
January 1945	Checked Monument. Ramsey County Engineering
January 1946	Checked Monument. Ramsey County Engineering
November 1950	Checked Monument. Ramsey County Engineering
March 1952	Checked Monument. Ramsey County Engineering
August 8, 1974	Found Cast Iron Monument flush and retied. Ramsey County Surveyor's Office
November 21, 1991	Retied Monument. Ramsey County Surveyor's Office
Unknown Date	Removed by construction. Ramsey County Surveyor's Office
August 1, 1994	Located position and retied. Ramsey County Surveyor's Office
August 9, 1994	Set 20-inch Cast Iron Monument. Ramsey County Surveyor's Office
December 14, 1998	Tied monument. Ramsey County Surveyor's Office
August 18, 2006	Retied Monument. Ramsey County Surveyor's Office
August 3, 2011	Retied Cast Iron Monument, flush. Ramsey County Surveyor's Office
June 4, 2018	Found a Cast Iron Monument encased in concrete, flush in bituminous road. Checked local ties using Certificate of Location dated August 3, 2011. All ties present and in good condition EXCEPT: both Catch Basin rim ties measured 0.05ft short. Ramsey County Surveyor's Office

MONUMENT 28

East Quarter Corner of Section 6, Township 30 North, Range 23 West

- June 4, 2018 In preparation for Mill and Overlay, set construction offset ties (two) consisting of 5/8-inch x 14-inch rebar with "Traverse Point" cap (See Construction Offset sheet dated 6-4-18). Ramsey County Surveyor's Office
- June 29, 2018 Following Cast Iron Monument removal during mill and overlay, placed a 5/8-inch x 14-inch rebar with 3-inch Aluminum Cap stamped "Ramsey County Surveyor" flush in new bituminous roadway using construction offsets and local ties. Ramsey County Surveyor's Office
- June 29, 2018 Set new ties (two) consisting of 5/8-inch x 14-inch rebar with red "Traverse Point" cap at N66°03'16"E 55.07 feet and S66°45'22"E 55.16 feet to replace both catch basin rim ties (See notes from setting of Monument dated 6-29-18). Ramsey County Surveyor's Office