

MONUMENT 279

CERTIFICATE OF LOCATION OF GOVERNMENT CORNER

Center of Section 32, Township 30 North, Range 23 West, County of Ramsey, State of Minnesota.

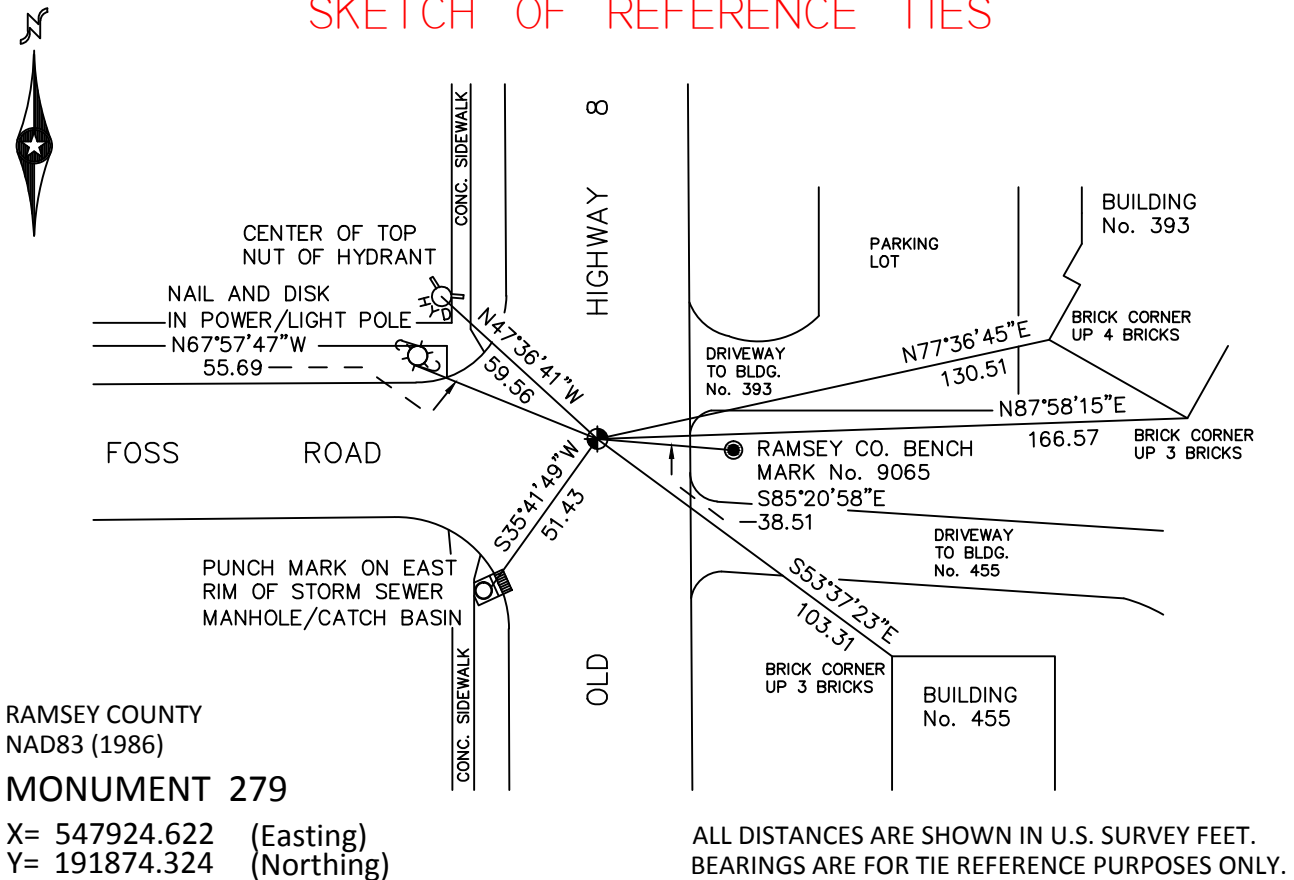
At the corner location shown on the sketch

On July 28, 2010 found a cast iron monument, within a cast iron manhole assembly.

left monument as found raised/lowered monument removed monument (explain)

On _____ placed a _____

SKETCH OF REFERENCE TIES



Statements of evidence relative to this corner are on the following page.

I hereby certify that this document has been prepared by me or under my direct supervision this _____ day of _____, 20____.

MINNESOTA LICENSE NO. _____
 County Surveyor Deputy County Surveyor Land Surveyor

OFFICE OF COUNTY SURVEYOR
County of Ramsey

I hereby certify that this document was filed in the County Surveyor's office this _____ day of _____, 20____.

Craig W. Hinzman, L.S.
Ramsey County Surveyor

MONUMENT 279

Found an iron in concrete; dug down +/-3.5 ft. and found nothing, September 7, 1976.

Set a cast iron monument, 1981.

Tied monument, January 31, 1991.

Retied monument, October 27, 1999.

Monument lowered and placed within a cast iron manhole assembly, July 27, 2005.

Tied monument, October 24, 2005.

Retied monument, July 28, 2010.