

# MONUMENT 278

## CERTIFICATE OF LOCATION OF GOVERNMENT CORNER

East Quarter Corner of Section 31, Township 30 North, Range 23 West, County of Ramsey, State of Minnesota.

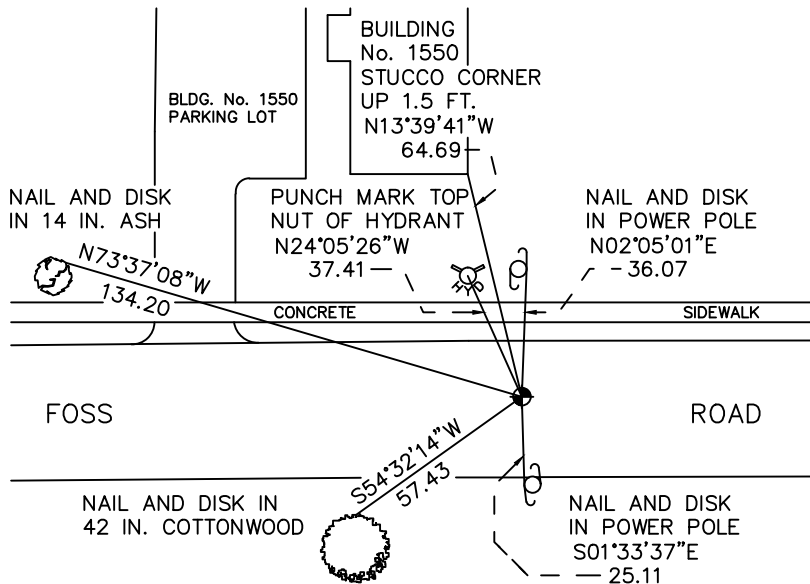
At the corner location shown on the sketch

On July 23, 2010 found a cast iron monument, flush.

left monument as found       raised/lowered monument       removed monument (explain)

On \_\_\_\_\_ placed a \_\_\_\_\_

### SKETCH OF REFERENCE TIES



RAMSEY COUNTY  
NAD83 (1986)

### MONUMENT 278

X= 545292.299 (Easting)  
Y= 191874.757 (Northing)

ALL DISTANCES ARE SHOWN IN U.S. SURVEY FEET.  
BEARINGS ARE FOR TIE REFERENCE PURPOSES ONLY.

Statements of evidence relative to this corner are on the following page.

I hereby certify that this document has been prepared by me or under my direct supervision this \_\_\_\_\_ day of \_\_\_\_\_, 20\_\_\_\_.

\_\_\_\_\_  
SIGNATURE

Minnesota License No. \_\_\_\_\_

- County Surveyor  
 Deputy County Surveyor       Land Surveyor

OFFICE OF COUNTY SURVEYOR  
County of Ramsey

I hereby certify that this document was filed in the County Surveyor's office this \_\_\_\_\_ day of \_\_\_\_\_, 20\_\_\_\_.

\_\_\_\_\_  
SIGNATURE

Craig W. Hinzman, L.S.  
Ramsey County Surveyor

## MONUMENT 278

Found nothing, ties gone. Placed a cast iron monument, May 6, 1976.

Tied monument, 1989.

Monument destroyed by City of New Brighton street construction. Set a 20 in. cast iron monument flush in concrete and tied, October 29, 1999.

Retied monument, October 24, 2005.

Retied monument, July 23, 2010.