

MONUMENT 277

CERTIFICATE OF LOCATION OF GOVERNMENT CORNER

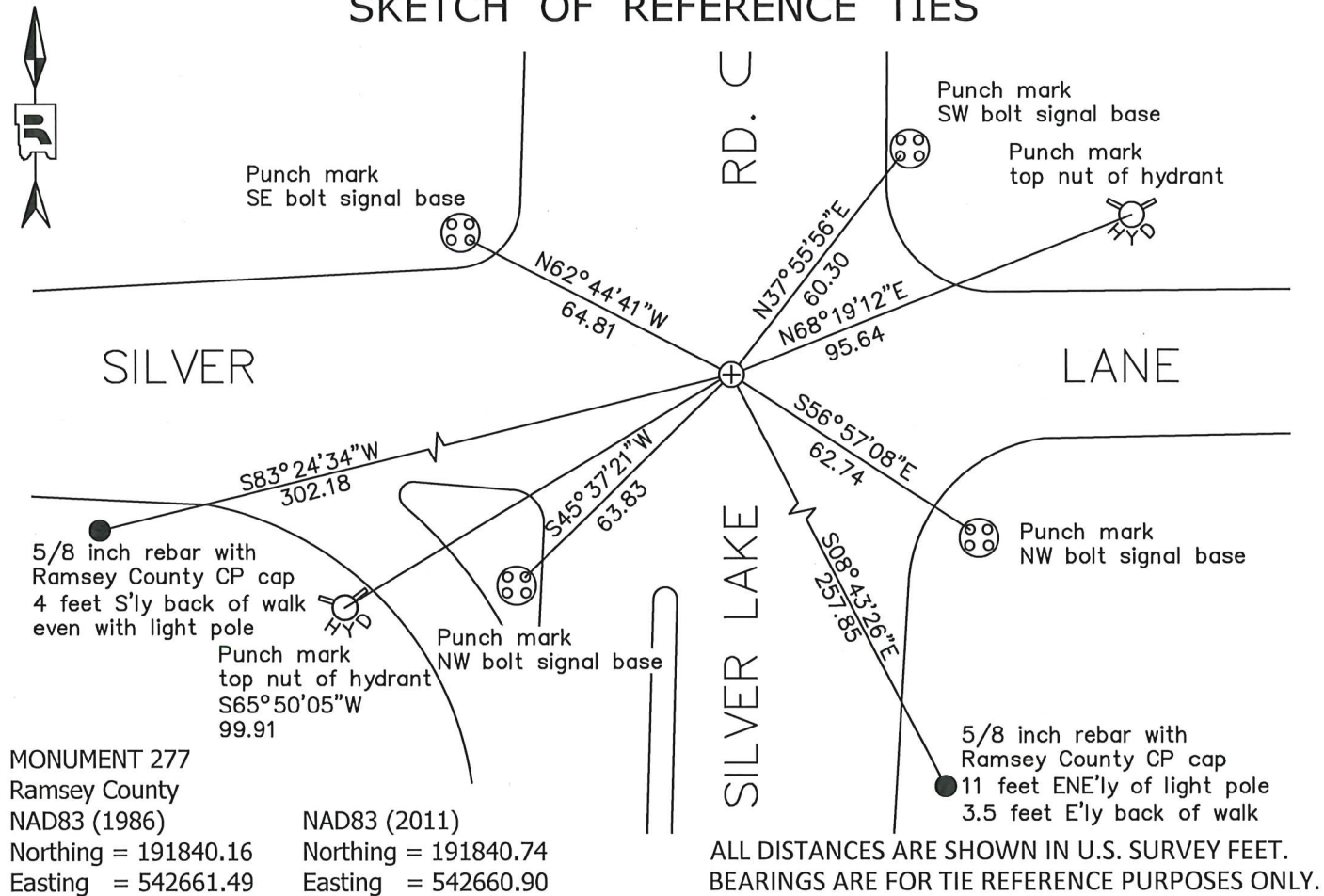
Center of Section 31, Township 30 North, Range 23 West, County of Ramsey, State of Minnesota.

At the corner location shown on the sketch

On May 14, 2019 found a cast iron monument, down 0.2 feet in bituminous road.

On November 18, 2019 placed a 5/8 inch X 14 inch rebar with 3 inch aluminum cap stamped "Ramsey County Surveyor", flush in new bituminous road.

SKETCH OF REFERENCE TIES



Statements of evidence relative to this corner are on the following page.

I hereby certify that this survey, plan, or report was prepared by me or under my direct supervision, that I am a duly Licensed Land Surveyor under the laws of the state of Minnesota, and that this certificate is correct and complete to the best of my knowledge and belief.

Devin R. Ball 4/7/22
 Devin R. Ball
 Deputy County Surveyor
 Minnesota License No. 56023

OFFICE OF COUNTY SURVEYOR
 County of Ramsey

I hereby certify that this document was filed in the County Surveyor's office this 7th day of April, 20 22.

Daniel D. Baar
 Daniel D. Baar, L.S.
 Ramsey County Surveyor
 Minnesota License No. 45816

MONUMENT 277

Center of Section 31, Township 30, Range 23

February 11, 1903	Fixed the Center of Section 31 by intersection and set monument. Ramsey County Resurvey
November 1943	Checked monument. Ramsey County Engineer
December 1946	Checked monument. Ramsey County Engineer
February 1954	Checked monument. Ramsey County Engineer
March 1960	Checked monument. Ramsey County Engineer
November 2, 1973	Plan Survey field notes in book 13-14 show a square monument symbol at the corner. Ramsey County Surveyor's Office
1975	Found a cast iron monument. Most likely the monument set in 1903 was removed or obliterated during road construction, and a cast iron monument was set in its place. Ramsey County Engineer
May 9, 1977	Found a cast iron monument, flush. Ramsey County Surveyor's Office
January 31, 1991	Found monument, down +/- 0.15 ft. and retied. Ramsey County Surveyor's Office
November 1, 2002	Retied monument, down 0.2 ft. Ramsey County Surveyor's Office
September 17, 2008	Retied monument, down 0.2 ft. Ramsey County Surveyor's Office
May 7, 2013	Found a Ramsey County cast iron monument, down 0.2 ft in bituminous road. Checked condition of ties. Ramsey County Surveyor's Office
August 29, 2018	Visited monument and found it covered with bituminous patch. Checked local ties but did not recover monument. Ramsey County Surveyor's Office
May 14, 2019	Found a cast iron monument, down 0.2 feet in bituminous road. Checked local ties and established offsets prior to removal during road construction. Ramsey County Surveyor's Office
November 18, 2019	Placed a 5/8 inch x 14 inch rebar with 3 inch aluminum cap stamped "Ramsey County Surveyor", flush in new bituminous road using offsets and recorded local ties. Ramsey County Surveyor's Office