

MONUMENT 276N

CERTIFICATE OF LOCATION OF GOVERNMENT CORNER

Witness Monument to the West Quarter Corner of Section 31, Township 30 North, Range 23 West, County of Ramsey, State of Minnesota.

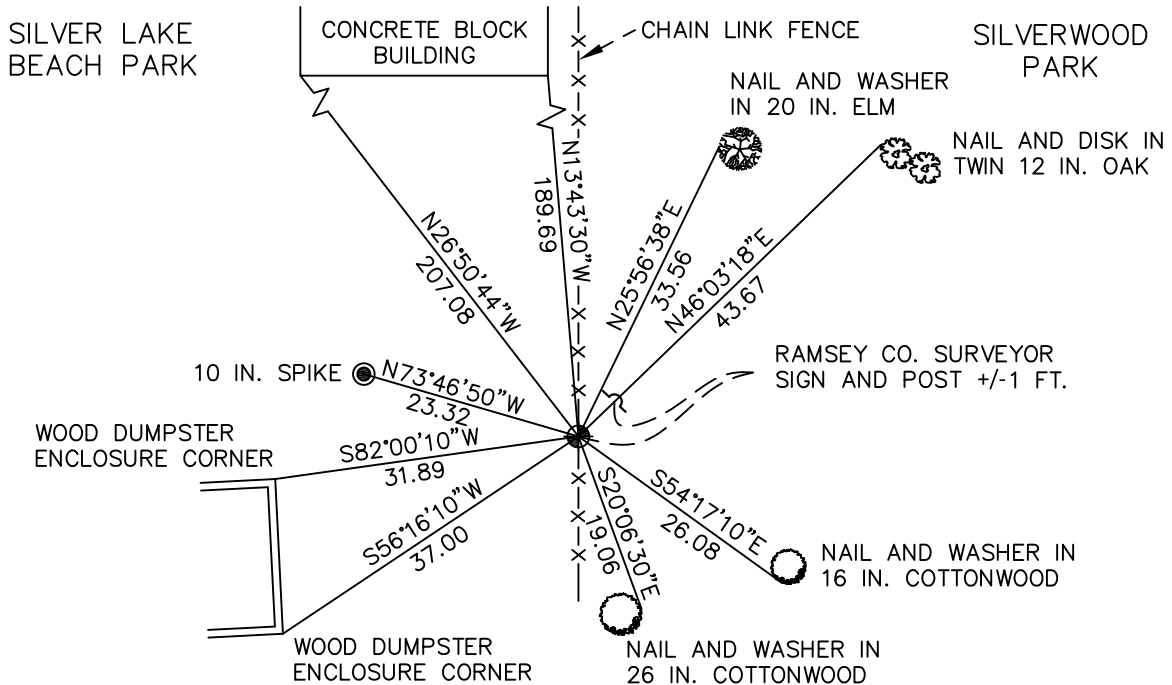
At the corner location shown on the sketch

On July 22, 2009 found a cast iron monument, flush.

left monument as found lowered monument removed monument (explain)

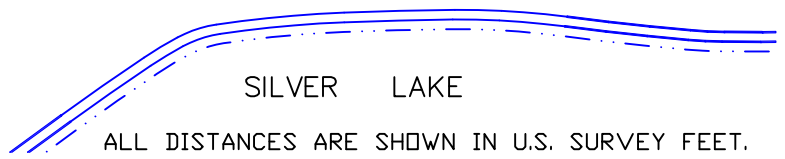
On _____ placed a _____

SKETCH OF REFERENCE TIES



RAMSEY COUNTY
NAD83 (1986)
MONUMENT 276N

X= 540410.097 (Easting)
Y= 192941.266 (Northing)



ALL DISTANCES ARE SHOWN IN U.S. SURVEY FEET.
BEARINGS ARE FOR TIE REFERENCE PURPOSES ONLY.

Statements of evidence relative to this corner are on the following page(s).

I hereby certify that this document and the data contained herein was prepared by me or under my direct supervision this _____ day of _____, 20____.

SIGNATURE

Minnesota License No. _____

- County Surveyor
 Deputy County Surveyor Land Surveyor

OFFICE OF COUNTY SURVEYOR

County of Ramsey

I hereby certify that this document was filed in the County Surveyor's office on the _____ day of _____, 20____.

SIGNATURE

Michael D. Fiebiger, P.L.S.
Ramsey County Surveyor

MONUMENT 276N

Found a cast iron monument, flush, August 15, 1977.

Found a cast iron monument under chain link fence; placed a sign and post, June 4, 1992.

Tied monument, November 8, 2002.

Retied monument, July 22, 2009.